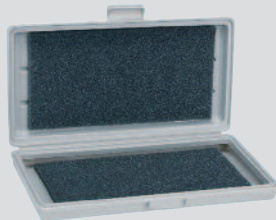


## Carrying Cases



**A-401**



**A-404**

## MODELS

Steel cases are substantially constructed and finished in gray hammerloid. Molded plastic cases are gray, high density polyethylene.

**A-401**, Plastic Carrying Case for 1212 Gas Pressure Kit, 910 Smoke Gage and up to 36" Roll up Manometers – 7-9/16" x 5-7/8" x 2-13/16"

**A-402A**, Nylon Carrying Pouch for Series 475, 477, 490 Digital Manometers – 7-1/2" x 3" x 2-1/4"

**A-404**, Plastic Carrying Case for Portable Inclined Gages 100, 101, 108, 115 – 12-1/4" x 6-1/4" x 1-3/4"

**A-405**, Plastic Carrying Case for Portable Inclined Gages 109, 100.5, 104-6, 102, 102.5 – 13-1/2" x 10" x 2-3/8"

**A-413**, Steel Carrying Case for Portable Draft Gages 104-8, 104-10 and 48" and larger Slack Tube Manometers – 18-1/2" x 4-3/8" x 2-1/4"

**A-431**, Steel Carrying Case for Air Velocity Meter, 400-5

**A-432**, Plastic Carrying Case for Magnehelic® Gage includes mounting stand, rubber tube, etc. (pgs. 4-5)

**A-433**, Steel Carrying Case for Air Velocity Meter, 400-10

**A-460**, Plastic Envelope for inclined Gages 170, 171, 172

**A-463**, Plastic Carrying Case with foam liner for 475-1-AV Air Velocity Kit – 13-1/2" x 10" x 2-3/8"