

Miscellaneous



A-351



A-352



A-353



A-354



A-356



A-357



A-363



A-364



A-366



A-397



A-464



A-465



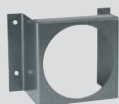
A-362



A-368



A-369



A-370



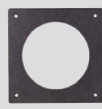
A-371



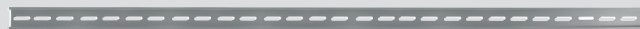
A-395



A-497



A-300



A-360

A-298, Flat Aluminum Bracket for flush mounting Capsuhelic® gage, 603A, 605, and 3000MR

A-299, Mounting Bracket, flush mount Magnehelic® gage in bracket. Bracket is then surface mounted. Steel with gray hammertone epoxy finish

A-300, Flat Aluminum Bracket for flush mounting Magnehelic® gage

A-351, Pinch Clamp to seal rubber tubing, as in a leakage test

A-352, Magneclip, slip on magnetic holder for acrylic plastic gages. Per pair

A-353, Magnetic Mounting. Flat style, secures to flowmeter, etc. with 6-32 machine screw and boots insert

A-354, Magnetic Mounting, Edge style, secures edge of acrylic manometer with 10-32 machine screw and boots insert

A-356, Gage plug with retainer loop, polyethylene plastic. For 1/4" ID tubing. Slip loop over tubing OD and insert plug for seal

A-357, Thermometer and terminal tube holder. SS wire

A-360, Aluminum DIN Rail, 1 m

A-362, Stand-Hang bracket, aluminum, for Minihelic® II gage

A-363, Scale Clamp Bar for 1221 Manometer

A-364, Magnet Assembly for 1222 Manometers, 2 required (3 required for 1222-36 and M-1000)

A-366, Manometer Cleaning Brush 1/4" OD x 2-1/8" Long. Attach to wire for use

A-368, Surface mounting plate, aluminum, for Magnehelic® gage

A-369, Stand-Hang Bracket, aluminum, for Magnehelic® gage

A-370, Mounting Bracket, Flush mount Capsuhelic® gage or Series 631B Transmitter in bracket. Bracket is then surface mounted. Steel with gray hammertone epoxy finish

A-371, Surface Mounting Bracket. Use with Photohelic® gage on horizontal or vertical surfaces. Also for Capsu-Photohelic® gages on vertical only

A-395, Surface Mounting Bracket for Series 4000 Capsuhelic® gages. Steel with gray hammertone epoxy finish

A-397, Step Drill. Rugged Step Drill quickly provides true round holes in thin materials. Ideal for installation of Dwyer Pitot Tubes in sheet metal duct. No centerpunch needed to steel. Drills 3/16" through 1/2" holes in 1/16" increments. (Net Price, No Discount Allowed)

A-464, Flush Mount Kit for Magnehelic® gages

A-465, Flush Mount Space Pressure Sensor

A-497, Surface Mounting Bracket for Minihelic®II gage. Steel with satin black finish