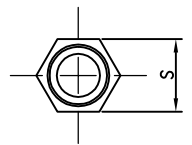
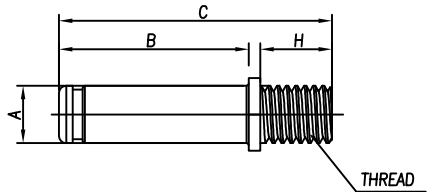
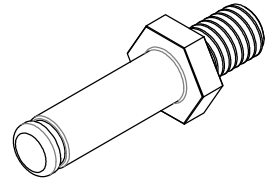
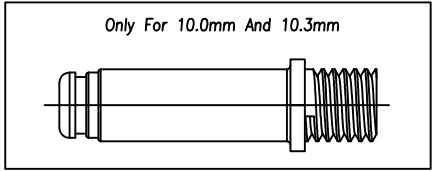


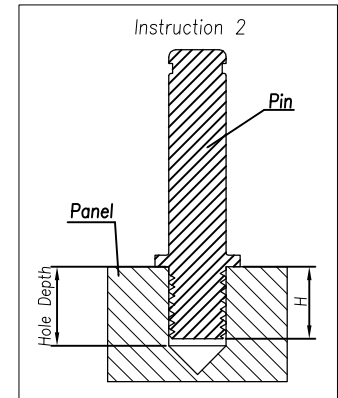
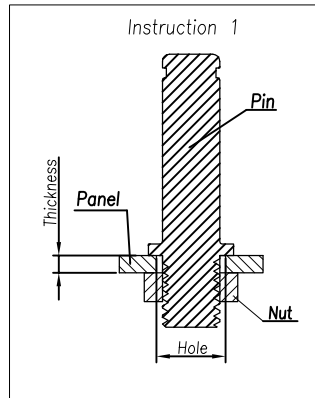
CUSTOMER DRAWING

REVISIONS				
REV	DESCRIPTION	DATE	BY	APPR
A	INITIAL RELEASE	01/04/14	DH	EC
B	CHANGE THE STRUCTURE OF PIN	01/26/14	DH	EC
C	CHANGE THE STRUCTURE OF PIN	02/06/14	DH	EC

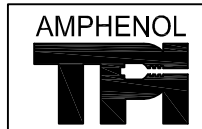


Ordering Example:
 RadLok _____ RL 9 080 - 101
 RadLok Pin _____
 RadLok Size: \varnothing 8.0mm _____
 Surface Finish: Silver _____

Note:
 Material: Copper Alloy.



Specification										
Pin Size (mm)	A (mm)	B (mm)	C (mm)	H (mm)	S (mm)	Thickness (mm)	Thread	Current(A)	Ordering Number (XXX-For Plating)	Plating
3.6	3.6	17.5	28.0	8	7.0	1.0~2.5	M4 X 0.7 - 6g	70	RL9036-XXX	101 Silver 102 Tin 103 Nickel
5.7	5.7	21.1	34.1	10	10.0	1.0~2.5	M6 X 1.0 - 6g	120	RL9057-XXX	
8.0	8.0	26.4	42.4	12	13.0	1.0~3.5	M8 X 1.25 - 6g	200	RL9080-XXX	
10.0	10.0	32.2	53.2	16	16.0	1.0~4.0	M10 X 1.5 - 6g	300	RL9100-XXX	
12.0	12.0	32.6	58.6	20	18.0	1.0~4.5	M12 X 1.75 - 6g	400	RL9120-XXX	



Amphenol Technical Products International GZ

第三角投影 THIRD ANGLE PROJECTION	页面 SHEET	幅面 SIZE	版次 REV.	比例 SCALE	PART NAME: RadLok Pin
1 OF 2	A3	C			DWG NO: See Table
签名 SIGNATURE	日期 DATE	UNLESS OTHERWISE SPECIFIED			CUST PART #:
制图 DRAWN	DH	1) All dimensions are in metric(mm). 2) Tolerances are as follows: 0 PL DEC ±1.00 1 PL DEC ±0.50 2 PL DEC ±0.20			
审核 CHECKED	GX	Angles ±1'			C
批准 APPROVAL	EC				N/A


THIS DRAWING IS SUPPLIED FOR INFORMATION ONLY. DESIGN FEATURES, SPECIFICATIONS AND PERFORMANCE DATA SHOWN HEREON ARE THE PROPERTY OF THE AMPHENOL CORPORATION. NO RIGHTS OF REPRODUCTION ARE IMPLIED. ALL DIMENSIONS ARE SUBJECT TO NORMAL MANUFACTURING VARIATIONS.

CUSTOMER DRAWING

REVISIONS				
REV	DESCRIPTION	DATE	BY	APPR
A	INITIAL RELEASE	01/04/14	DH	EC
B	CHANGE THE STRUCTURE OF PIN	01/26/14	DH	EC
C	CHANGE THE STRUCTURE OF PIN	02/06/14	DH	EC

Table			
Plating Type	Size	Description	FG P/N
Silver	3.6mm	RL Pin RL9036-101	AC-CP000102
	5.7mm	RL Pin RL9057-101	AC-CP000104
	8.0mm	RL Pin RL9080-101	AC-CP000105
	10.0mm	RL Pin RL9100-101	AC-CP000107
	12.0mm	RL Pin RL9120-101	AC-CP000110
Tin	3.6mm	RL Pin RL 9036-102	AC-CP000178
	5.7mm	RL Pin RL 9057-102	AC-CP000180
	8.0mm	RL Pin RL 9080-102	AC-CP000181
	10.0mm	RL Pin RL 9100-102	AC-CP000183
	12.0mm	RL Pin RL 9120-102	AC-CP000186
Nickel	3.6mm	RL Pin RL 9036-103	AC-CP000151
	5.7mm	RL Pin RL 9057-103	AC-CP000153
	8.0mm	RL Pin RL 9080-103	AC-CP000154
	10.0mm	RL Pin RL 9100-103	AC-CP000156
	12.0mm	RL Pin RL 9120-103	AC-CP000159

THIS DRAWING IS SUPPLIED FOR INFORMATION ONLY. DESIGN FEATURES, SPECIFICATIONS AND PERFORMANCE DATA SHOWN HEREON ARE THE PROPERTY OF THE AMPHENOL CORPORATION. NO RIGHTS OF REPRODUCTION ARE IMPLIED. ALL DIMENSIONS ARE SUBJECT TO NORMAL MANUFACTURING VARIATIONS.

		Amphenol Technical Products International GZ				PART NAME:	
		第三角投影 THIRD ANGLE PROJECTION	页面 SHEET	幅面 SIZE	版次 REV.	比例 SCALE	RadLok Pin
签名 SIGNATURE		日期 DATE		UNLESS OTHERWISE SPECIFIED 1) All dimensions are in metric(mm). 2) Tolerances are as follows: 0 PL DEC ±1.00 1 PL DEC ±0.50 2 PL DEC ±0.20		DWG NO: See Table	
制图 DRAWN	DH	02/06/2014	02/06/2014			CUST PART #: N/A	
审核 CHECKED	GX	02/06/2014	02/06/2014	Angles ±1°			
批准 APPROVAL	EC	02/06/2014					