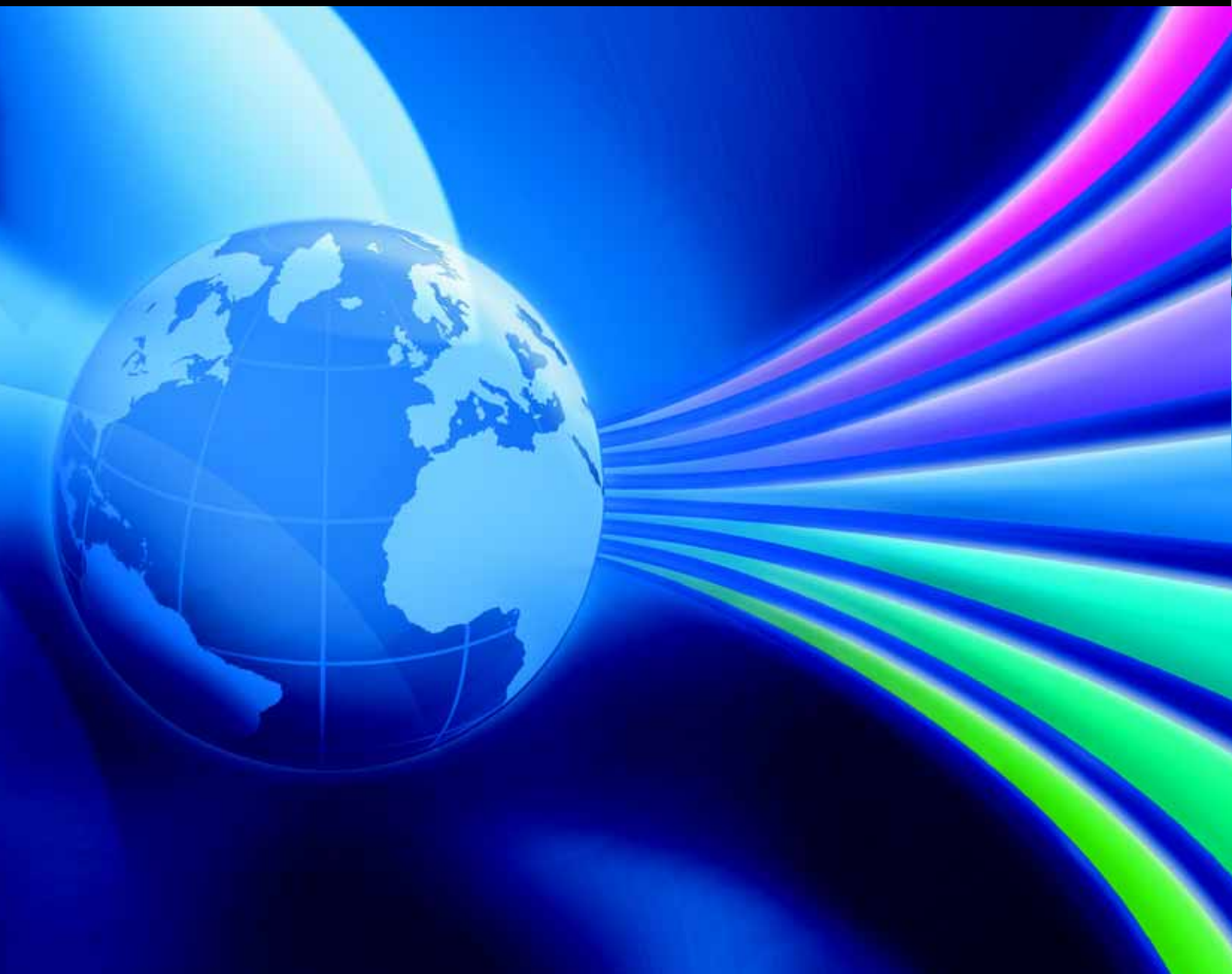


## Catalogue 32



**Global = Faster, better, more efficient.**

## Filter technology for cooling units



### Lint screen

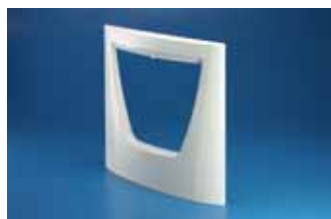
Especially for the use of cooling units and air/air heat exchangers where there is a high proportion of lint in the ambient air.

#### Material:

Stainless steel mesh

For devices	Packs of	Model No. SK
SK 3304. . . . /SK 3305. . . . / SK 3328. . . . /SK 3329. . . . / SK 3338. . . .	1	<b>3329.904</b>

Delivery times available on request.



### Louvred grille for lint screen

#### Material:

ABS

For	Packs of	Model No. SK
SK 3329.904	1	<b>3329.903</b>

Delivery times available on request.



### Spare filter mats for fan-and-filter units

Made of chopped-fibre mat with a progressive structure.

Temperature-resistant to 100°C, self-extinguishing category F1 to DIN 53 438.

Dust-laden air side: Open structure.

Clean air end: Closed structure.

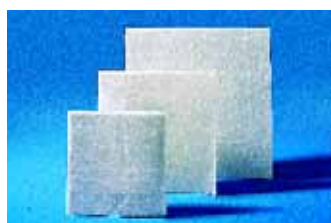
Reliable filtering of virtually all types of dust from a particle size of 10 µm.

#### Material:

Chemical fibre

For fan-and-filter units	W x H x D mm	Packs of	Model No. SK
SK 3321. . . .	89 x 89 x 10	5	<b>3321.700</b>
SK 3322. . . .	120 x 120 x 12	5	<b>3322.700</b>
SK 3323. . . .	173 x 173 x 17	5	<b>3171.100</b>
SK 3324. . . /SK 3325. . . .	221 x 221 x 17	5	<b>3172.100</b>
SK 3326. . . .	289 x 289 x 17	5	<b>3173.100</b>
SK 3327. . . .	286 x 286 x 10	5	<b>3327.700</b>

For filter holders	W x H x D mm	Packs of	Model No. SK
SK 3175.000	338 x 242 x 20	3	<b>3174.000</b>



### Fine filter mats for fan-and-filter units

Made of chopped-fibre mat with a progressive structure. Temperature-resistant to 100°C, self-extinguishing category F1 to DIN 53 438.

Dust-laden air side: Open structure.

Clean air end: Closed structure.

Reliable filtering of virtually all types of dust from a particle size of 10 µm.

#### Material:

Chemical fibre

For fan-and-filter units/outlet filters	W x H x D mm	Packs of	Model No. SK
SK 3323. . . .	173 x 173 x 12	5	<b>3181.100</b>
SK 3324. . . /SK 3325. . . .	221 x 221 x 12	5	<b>3182.100</b>
SK 3326. . . /SK 3327. . . .	289 x 289 x 12	5	<b>3183.100</b>