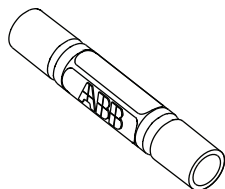
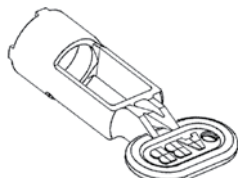


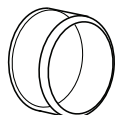
Accessories



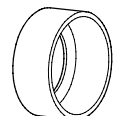
Lamp changing tool



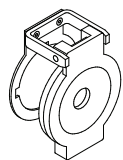
Mounting tool



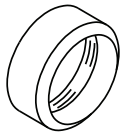
Silicone boot



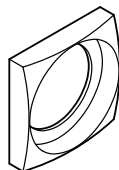
Protective ring



Protective cover



Bezel



Square bezel

Lamp changing tool

Description	Catalog No.	Ref. Code	List Price
For LEDs and for bulbs	KA1-8072	1SFA 616 920 R8072	\$ 10.00

Mounting tool

Description	Catalog No.	Ref. Code	List Price
Used for tightening the sleeve	KA1-8015	1SFA 611 920 R8015	\$ 10.00

Silicone boot

Of transparent, heat and cold resistant rubber. Does not harden at low temperature. Gives IP 67 degree of protection. When membrane is used, remove the gasket.

For operator with	Catalog No.	Ref. Code	List Price
Flush button	KA1-8052	1SFA 616 920 R8052	\$ 8.00
Extended button	KA1-8002	1SFA 616 920 R8002	
Double pushbutton	MA1-8126	—	

Emergency stop shroud

For 40 mm Emergency Stop Pushbuttons; *NOT for use with plastic enclosures.*

Color	Catalog No.	Ref. Code	List Price
To prevent inadvertant operation. Yellow	KA1-8053	1SFA 616 920 R8053	\$ 16.00

Protective ring

For flush and extended buttons

Description	Catalog No.	Ref. Code	List Price
To prevent inadvertant operation. Not together with legend plate holder.	SK 615 512-1	SK 615 512-1	\$ 4.00

Protective cover

Description	Catalog No.	Ref. Code	List Price
For flush button. To prevent inadvertant operation. Not together with legend plate holder.	KA1-8010	1SFA 616 920 R8010	\$ 15.00

Bezel (Packing unit 10 pieces)

Description	Catalog No.	Ref. Code	List Price
For pushbutton			
Grey, plastic	KA1-8079	1SFA 616 920 R8079	\$ 1.00
Black, plastic	KA1-8022	1SFA 616 920 R8022	1.00
Metal	KA1-8021	1SFA 616 920 R8021	2.50

For selector switch

Grey, plastic	KA1-8077	1SFA 616 920 R8077	1.00
Black, plastic	KA1-8080	1SFA 616 920 R8080	1.00
Metal	KA1-8024	1SFA 616 920 R8024	2.50

Square bezel

Black, plastic (Packing unit 10 pieces)	SK 616 016-2	SK 616 016-2	2.00
Grey, plastic (Packing unit 10 pieces)	KA1-8124	1SFA 611 920 R8124	