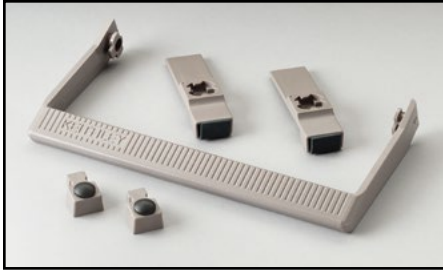


Bench Kits, Rack Mount Kits



Model 2000-Benchkit: Benchtop Restore Kit. Rubber feet and carrying handles are removed during rack mounting. These items can be used with any of the following models to convert it back to a benchtop instrument.

For use with: Series 2000, 2182A, Series 2300, Series 2400, Series 2500, Series 2600B, 2700, 2701, 6220, 6221, 6430, 6482, 6485, 6487, 6514, 6517A, 6517B, 7001



Model 248-RMK-* Fixed Rack Mount Kit: Enables rack mounting of Model 248. **248-RMK-1** rack mounts one Model 248. **248-RMK-2** (not pictured) rack mounts two Model 248s side by side.

For use with: 248



Model 4200-KEY-RM: Rack mount kit for cabinet mounting of standard keyboard and pointing devices.

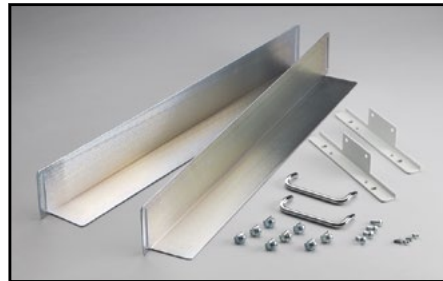
For use with: 4200-SCS

SELECTOR GUIDE: RACK MOUNT KITS

Instrument	Single Fixed	Single Slide ¹	Dual Fixed	Type of Mount
Series 2000 2700 6487			4288-2 ²	Side
2182A 2701 6514			4288-4 ³	Shelf
Series 2300 6220	4288-1		4288-5 ⁴	Shelf
Series 2200 6221 6517B			4288-9 ⁴	Shelf
Series 2500 6485 7001			4299-7	Side
Series 2100 Series 2400 6430	4299-3		4299-4	Side
Series 2600B	4299-1 4299-6		4299-2	Side
2750, System 46, System 46T	4288-7			Rear bracket
Series 3700A	4288-10			Rear bracket
248	248-RMK-1		248-RMK-2	Side
707B	Included	7079		Side
708B	Included			Side
4200-SCS/C or /F	4200-RM			
7002	7002-RMK-1	7002-RMK-2		Bracket w/handles

NOTES

- Slide rack mount kits are not compatible with equipment cabinet Models 8000-10, 8000-14, and 8000-17.
- Model 4288-2 mounts any two of the listed models, except 776.
- Model 4288-4 mounts: ANY ONE plus ANY ONE
230, 230-1 428-PROG, Series 2000, 2182A, Series 2300, Series 2400, Series 2500, 2700, 2701, 6220, 6221, 6430, 6485, 6487, 6514, 6517A, 6517B, 7001
- Models 4288-5 and 4288-9 mount any one or two of the listed models on a shelf-type mount.



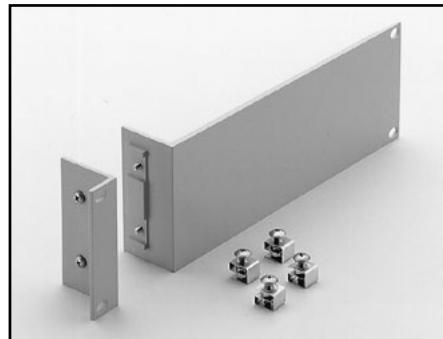
Model 4200-RM: Fixed rack mount kit for cabinet mounting of the 4200-SCS.

For use with: 4200-SCS



Model 4288-2 Fixed Rack Mount Kit: Height: 88mm (3 1/2 in).

For use with: See Selector Guide.



Model 4288-1 Fixed Rack Mount Kit: Single-unit rack mount kit. Height: 88mm (3 1/2 in).

For use with: See Selector Guide.

1.888.KEITHLEY (U.S. only)

www.keithley.com

A Greater Measure of Confidence

KEITHLEY

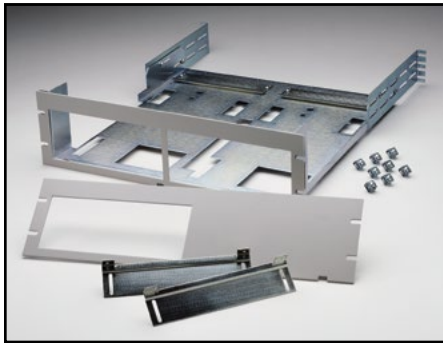
A Tektronix Company

Rack Mount Kits



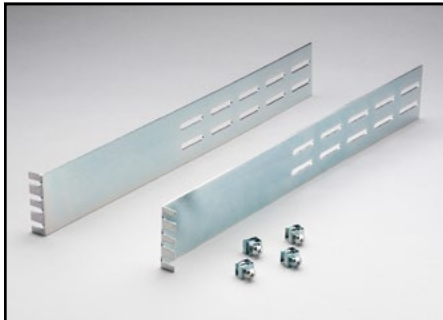
Model 4288-4 Fixed Rack Mount Kit: Enables rack mounting of one Model 230 next to one 428-PROG, 776, Series 2000, 2182A, Series 2300, Series 2400, Series 2600B, 2700, 2701, 6220, 6221, 6514, 6485, 6487, 6517A, 6517B, or 7001.

For use with: See Selector Guide.



Model 4288-5 Fixed Rack Mount Kit: The single- and dual-instrument front panels included enable rack mounting of either one or two 3½-inch instruments. Height: 132mm (5¼ in). Depth: 457mm (18 in).

For use with: See Selector Guide.



Model 4288-7 Rear Support Mount Kit: For rack mount applications where more than one or two card modules are installed to provide added support for the rear of the mainframe. Note that front rack mounting hardware is supplied with the Model 2750 mainframe. 88mm (3.5 in) height.

For use with: 2750, System 46, System 46T



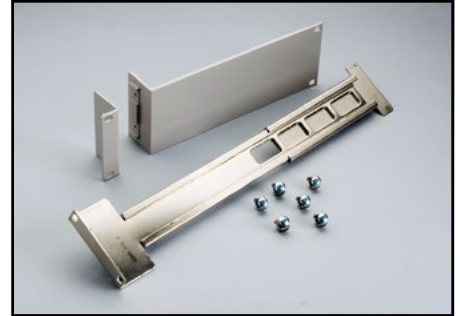
Model 4288-9 Fixed Rack Mount Kit: Shelf style rack mount kit with single- and dual-instrument front plates provided. Also included are extended rear support brackets and hardware for installation.

For use with: Series 2200 Power Supplies



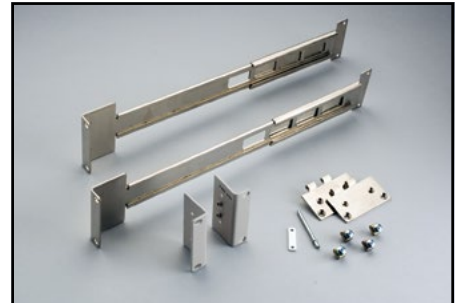
Model 4288-10 Rear Support Mount Kit: For rack mount applications where more than one or two card modules are installed to provide added support for the rear of the mainframe. Note that front rack mounting hardware is supplied with Series 3700A mainframes. 88mm (3.5 in) height.

For use with: Series 3700A



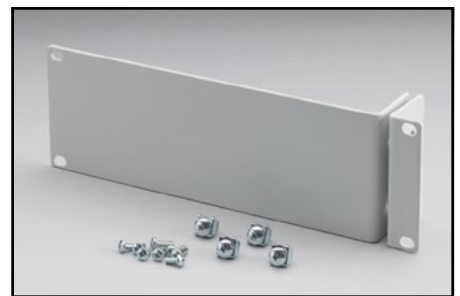
Model 4299-1: Heavy duty, single rack mount kit with front and rear support. Height: 88mm (3.5 in).

For use with: Series 2600B



Model 4299-2: Heavy duty, dual rack mount kit with front and rear support. Height: 88mm (3.5 in).

For use with: Series 2600B



Model 4299-3 Universal Single Unit Rack Mount Kit: Includes all required hardware to rack mount a single Keithley or Agilent half rack instrument using front panel only mounting into a standard 19 inch equipment rack. Not compatible with Series 2600B. 88mm (3.5 in) height.

For use with: Half rack instruments (excluding Series 2600B)

1.888.KEITHLEY (U.S. only)

www.keithley.com

Rack Mount Kits



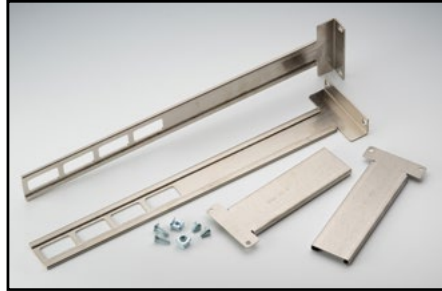
Model 4299-4 Universal Dual Unit Rack Mount Kit: Includes all required hardware to rack mount two Keithley and/or Agilent half-rack instruments together using front panel only mounting into a standard 19-inch equipment rack. Not compatible with Series 2600B. 88mm (3.5 in) height.

For use with: Half-rack instruments (excluding Series 2600B)



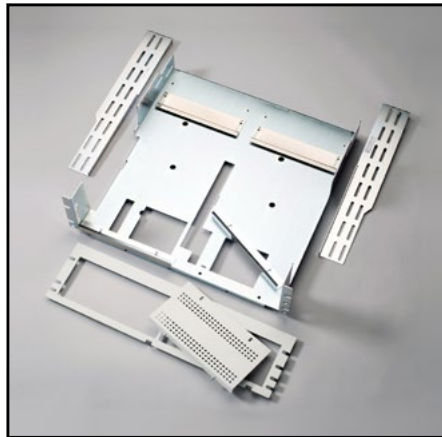
Model 4299-5: 1U vent panel.

For use with: Series 2600B



Model 4299-6 Single Fixed Rack Kit: Includes all required hardware to rack-mount a Keithley full-rack instrument in a standard 19-inch equipment rack.

For use with: 2651A, 2657A



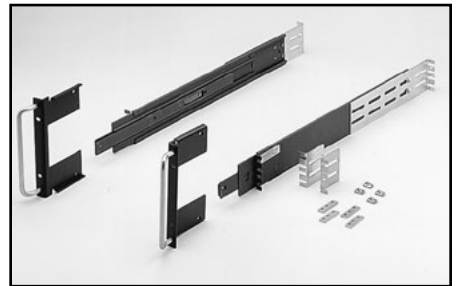
Model 4299-7 Dual Fixed Rack Mount Kit: Enables rack-mounting of Series 2200 power supplies with other instruments.

For use with: Series 2200



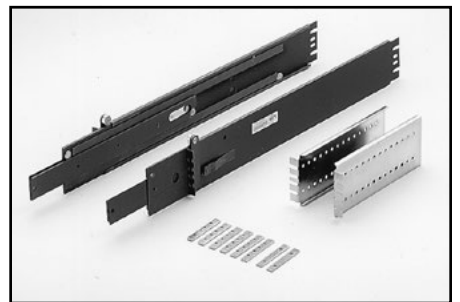
Model 7002-RMK-1 Fixed Rack Mount Kit: Two 7 in. flanged brackets and hardware for mounting the Model 7002 in a standard 48.3cm (19 in) equipment cabinet. Can be used with Models 8000, 8000-10, 8000-14, or 8000-17.

For use with: 7002



Model 7002-RMK-2 Slide Rack Mount Kit: Two sets of flanged brackets, slides, and hardware to mount Model 7002 in standard 48.3cm (19 in) equipment cabinet. Can be used with Model 8000.

For use with: 7002



Model 7079 Slide Rack Mount Kit: Two sets of flanged brackets, slides, and hardware to mount Model 707A in standard 48.3cm (19 in) equipment cabinet. Can be used with Model 8000.

For use with: 707B

1.888.KEITHLEY (U.S. only)

www.keithley.com

A Greater Measure of Confidence

KEITHLEY

A Tektronix Company