

Frameless sound attenuating enclosures are a proven way to reduce regenerative blower mechanical noise when additional mufflers are just not enough. Additional enclosure options are available.

FEATURES:

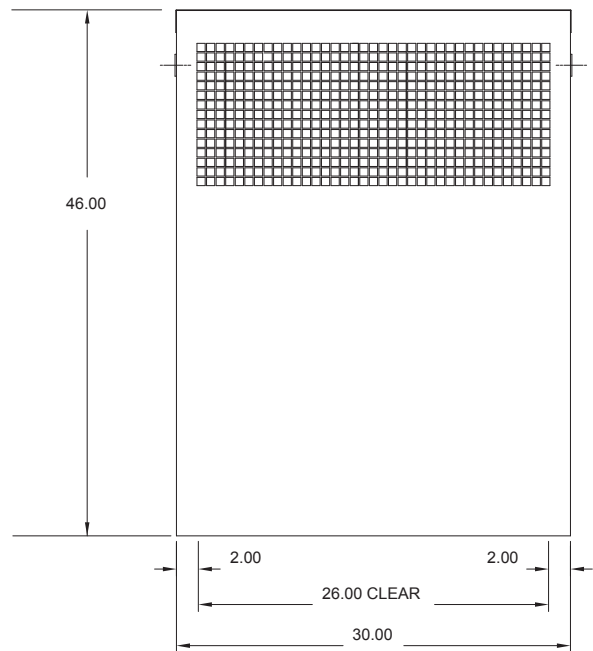
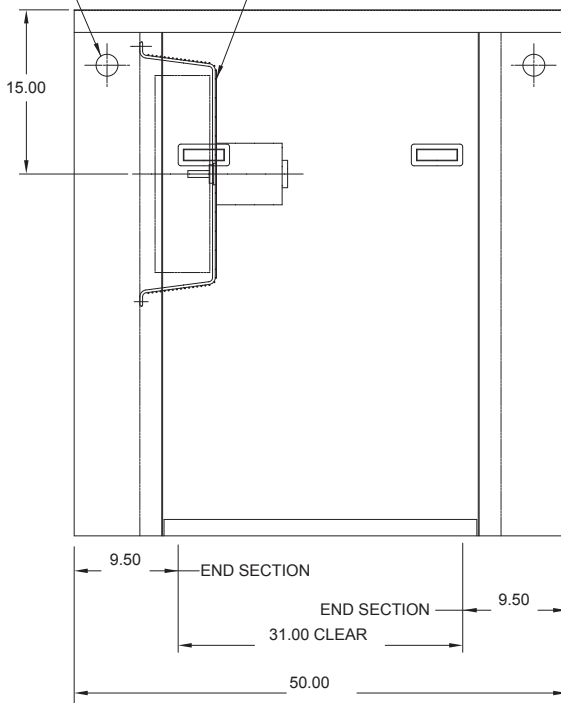
- Excellent noise reduction (~10DbA)
- Resistance to elements and aesthetic appearance
- Compact size for ease of installation
- Easy access for routine maintenance (removable floor and sidewalls)

SPECIFICATIONS:

- Roof, floor and walls: galvanized 16 ga. carbon steel sheet metal
- Louvers and/or hood: Riveted aluminum
- Hardware: Chrome plated aluminum handles with stainless steel fasteners
- Latches: Over center galvanized with adjustable tension and padlock eye
- Sound attenuating material: 2" rigid polyester foam with mylar facing (rated UL-94)
- Exterior finish: Polyurethane enamel
- Enclosure ventilation: 1/3 HP, 230/460V, 3-phase or 1-phase 50/60Hz fan, TEFC or XP motors
- Fan Guard: Nickel plated wire type

LIFTING HOLE (PLUGGED)
TWO (2) PER SIDE (TOTAL 4)

18" FAN ASSEMBLY



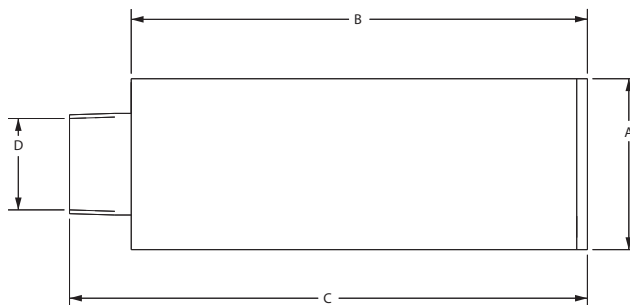
Specification	Units	Part/Model Number	
		SAE30W72F	SAE36W72F
		552904	552905
Width	Inches	30	36
	mm	762	914.4
Blower Size	-	656, 707, 757, 808, 858, 909, 979, P9, S9	14, P13, S13, P15, S15
Height	Inches	46	52
	mm	1168.4	1320.8
Length	Inches	50	60
	mm	1270	1524

This document is for informational purposes only and should not be considered as a binding description of the products or their performance in all applications. The performance data on this page depicts typical performance under controlled laboratory conditions. AMETEK is not responsible for blowers driven beyond factory specified speed, temperature, pressure, flow or without proper alignment. Actual performance will vary depending on the operating environment and application. AMETEK products are not designed for and should not be used in medical life support applications. AMETEK reserves the right to revise its products without notification. The above characteristics represent standard products. For product designed to meet specific applications, contact AMETEK Technical & Industrial Products Sales department.

Mufflers lower blower noise in areas where reduced sound levels are required.

SPECIFICATIONS:

HOUSING – Steel
 MEDIA – Acoustical Material



Specification	Units	Part/Model Number						
		523627	516838	523626	523625	523624	523623	523622
Ref Blower Model	-	B	B	C	D	E	E	E
Inlet Connection	-	1.0 NPT Male	1.0 SO Slip on	1.25 NPT Male	1.50 NPT Male	2.00 NPT Male	2.00 NPSC Female	2.00 NPT Male
Dimension A	Inches	4.00	1.90	4.00	4.00	4.00	4.00	4.00
	mm	101.6	48.3	101.6	101.6	101.6	101.6	101.6
Dimension B	Inches	10.93	5.16	10.93	10.93	10.93	10.93	15.75
	mm	277.6	131.1	277.6	277.6	277.6	277.6	400.1
Dimension C	Inches	13.98	6.23	14.07	14.57	12.16	12.43	16.95
	mm	355.1	158.2	357.4	370.1	308.9	315.7	430.5
Dimension D	Inches	1.00	1.00	1.25	1.50	2.00	2.00	2.00
	mm	25.4	25.4	31.8	38.1	50.8	50.8	50.8

A = SPIRAL	E = DR/EN/CP 656, 6, 633, S7
B = DR/EN/CP 068, 083, 101, 202	F = DR/EN/CP 757, 808, 858, S9, P9 (Inlet Only)
C = DR/EN/CP 303, 312, 313, 353	G = DR/EN/CP 833, S13, P13 (Inlet Only)
D = DR/EN/CP 404, 454, 513, 505, 555, 523	H = DR/EN/CP 909, 979, 1233, 14, S15, P15 (Inlet Only)

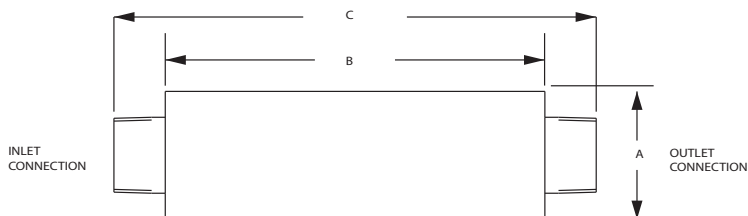
This document is for informational purposes only and should not be considered as a binding description of the products or their performance in all applications. The performance data on this page depicts typical performance under controlled laboratory conditions. AMETEK is not responsible for blowers driven beyond factory specified speed, temperature, pressure, flow or without proper alignment. Actual performance will vary depending on the operating environment and application. AMETEK products are not designed for and should not be used in medical life support applications. AMETEK reserves the right to revise its products without notification. The above characteristics represent standard products. For product designed to meet specific applications, contact AMETEK Technical & Industrial Products Sales department.

Inline Mufflers are utilized for noise reduction in applications where piping systems are connected directly to both ends of the muffler. Muffler may be used on inlet or outlet of blower.

SPECIFICATIONS:

HOUSING – Steel

MEDIA – Acoustical Material



Specification	Units	Part/Model Number								
		550888	522948	529900	551377	515185	511569	515210	551565	516264
Ref Blower Model	-	D	E	E	E	F	G	G	G	H
Inlet Connection	-	1.5 NPT-M	2.0 NPT-M	2.0 NPSC-F	2.0 NPT-M	2.5 NPT-M	3.0 NPT-M	4.0 NPT-M	4.0 NPT-M	4.0 NPT-M
Outlet Connection	-	2.0 NPT-F	2.0 NPSC-F	2.0 NPSC-F	2.0 NPT-M	2.5 NPT-F	3.0 NPT-F	4.0 NPT-F	4.0 NPT-M	4.0 NPT-F
Dimension A	Inches	4.00	4.00	4.38	4.00	6.12	7.00	10.00	10.00	8.00
	mm	101.6	101.6	111.3	101.6	155.4	177.8	254	254	203.2
Dimension B	Inches	7.75	15.75	15.75	15.75	15.00	18.00	24.00	24.00	22.00
	mm	196.9	400.1	400.1	400.1	381	457.2	609.6	609.6	558.8
Dimension C	Inches	15.5	18.45	18.45	18.15	19.00	22.25	30.00	30.00	27.75
	mm	393.7	468.6	468.6	461	482.6	565.2	762	762	704.9

A = SPIRAL	E = DR/EN/CP 656, 6, 633, S7
B = DR/EN/CP 068, 083, 101, 202	F = DR/EN/CP 757, 808, 858, S9, P9 (Inlet Only)
C = DR/EN/CP 303, 312, 313, 353	G = DR/EN/CP 833, S13, P13 (Inlet Only)
D = DR/EN/CP 404, 454, 513, 505, 555, 523	H = DR/EN/CP 909, 979, 1233, 14, S15, P15 (Inlet Only)

This document is for informational purposes only and should not be considered as a binding description of the products or their performance in all applications. The performance data on this page depicts typical performance under controlled laboratory conditions. AMETEK is not responsible for blowers driven beyond factory specified speed, temperature, pressure, flow or without proper alignment. Actual performance will vary depending on the operating environment and application. AMETEK products are not designed for and should not be used in medical life support applications. AMETEK reserves the right to revise its products without notification. The above characteristics represent standard products. For product designed to meet specific applications, contact AMETEK Technical & Industrial Products Sales department.