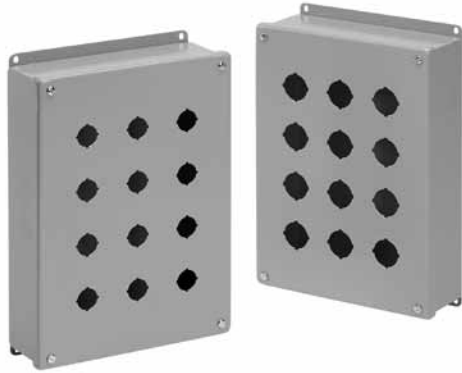


**30.5-MM AND 22.5-MM PUSHBUTTON ENCLOSURES, TYPE 12**

**APPLICATION**

These pushbutton enclosures are designed to hold 30.5-mm or 22.5-mm pushbuttons and switches.

**SPECIFICATIONS**

- 16 or 14 gauge steel
- Seams continuously welded and ground smooth
- Captivated cover screws thread into sealed wells
- Grounding nut in body of enclosure
- Bonding provision on cover
- Oil-resistant gasket
- Factory stamped 4-way pushbutton holes
- Enclosures with more than one column of pushbutton holes have internal detachable hinge
- External wall-mounting brackets

**FINISH**

ANSI 61 gray polyester powder paint inside and out

**ACCESSORIES**

See also *Accessories*.  
 Industrial Corrosion Inhibitors  
 HOL-SEALERS™ Hole Seals  
 Tamper-Resistant Screws

**BULLETIN: PB1**
**INDUSTRY STANDARDS**

UL 508A Listed; Type 12, 13; File No. E61997  
 cUL Listed per CSA C22.2 No. 94; Type 12, 13; File No. E61997

NEMA/EEMAC Type 12, 13  
 CSA File Number 42186: Type 12  
 IEC 60529, IP65

## Standard Product

| Catalog Number | AxBxC in.            | AxBxC mm       | Hole Size | Number of Holes | Gauge | Mounting G x H (in.) | Mounting G x H (mm) | Overall L x W (in.) | Overall L x W (mm) | J (in.) | J (mm) | T (in.) | T (mm) | X (in.) | X (mm) | Y (in.) | Y (mm) |
|----------------|----------------------|----------------|-----------|-----------------|-------|----------------------|---------------------|---------------------|--------------------|---------|--------|---------|--------|---------|--------|---------|--------|
| E1PB           | 3.50 x 3.25 x 2.75   | 89 x 83 x 70   | 30.5 mm   | 1               | 16    | 4.00 x 2.38          | 102 x 60            | 4.50 x 3.47         | 114 x 88           | 2.31    | 59     | 3.00    | 76     | 1.73    | 44     | 1.86    | 47     |
| E1PBG          | 3.50 x 3.25 x 2.75   | 89 x 83 x 70   | 22.5 mm   | 1               | 16    | 4.00 x 2.38          | 102 x 60            | 4.50 x 3.47         | 114 x 88           | 2.31    | 59     | 3.00    | 76     | 1.73    | 44     | 1.86    | 47     |
| E2PB           | 5.75 x 3.25 x 2.75   | 146 x 83 x 70  | 30.5 mm   | 2               | 16    | 6.25 x 2.38          | 159 x 60            | 6.75 x 3.47         | 171 x 88           | 2.31    | 59     | 3.00    | 76     | 1.73    | 44     | 1.86    | 47     |
| E2PBG          | 5.75 x 3.25 x 2.75   | 146 x 83 x 70  | 22.5 mm   | 2               | 16    | 6.25 x 2.38          | 159 x 60            | 6.75 x 3.47         | 171 x 88           | 2.31    | 59     | 3.00    | 76     | 1.73    | 44     | 1.86    | 47     |
| E3PB           | 8.00 x 3.25 x 2.75   | 203 x 83 x 70  | 30.5 mm   | 3               | 14    | 8.50 x 2.38          | 216 x 60            | 9.00 x 3.47         | 229 x 88           | 2.31    | 59     | 3.00    | 76     | 1.73    | 44     | 1.86    | 47     |
| E3PBG          | 8.00 x 3.25 x 2.75   | 203 x 83 x 70  | 22.5 mm   | 3               | 14    | 8.50 x 2.38          | 216 x 60            | 9.00 x 3.47         | 229 x 88           | 2.31    | 59     | 3.00    | 76     | 1.73    | 44     | 1.86    | 47     |
| E4PB           | 10.25 x 3.25 x 2.75  | 260 x 83 x 70  | 30.5 mm   | 4               | 14    | 10.75 x 2.38         | 273 x 60            | 11.25 x 3.47        | 286 x 88           | 2.31    | 59     | 3.00    | 76     | 1.73    | 44     | 1.86    | 47     |
| E4PBG          | 10.25 x 3.25 x 2.75  | 260 x 83 x 70  | 22.5 mm   | 4               | 14    | 10.75 x 2.38         | 273 x 60            | 11.25 x 3.47        | 286 x 88           | 2.31    | 59     | 3.00    | 76     | 1.73    | 44     | 1.86    | 47     |
| E4SPB          | 7.25 x 6.25 x 3.00   | 184 x 159 x 76 | 30.5 mm   | 4               | 14    | 7.75 x 5.38          | 197 x 137           | 8.25 x 6.47         | 210 x 164          | 2.56    | 65     | 6.00    | 152    | 2.11    | 54     | 2.61    | 66     |
| E4SPBG         | 7.25 x 6.25 x 3.00   | 184 x 159 x 76 | 22.5 mm   | 4               | 14    | 7.75 x 5.38          | 197 x 137           | 8.25 x 6.47         | 210 x 164          | 2.56    | 65     | 6.00    | 152    | 2.11    | 54     | 2.61    | 66     |
| E5PB           | 12.50 x 3.25 x 2.75  | 317 x 83 x 70  | 30.5 mm   | 5               | 14    | 13.00 x 2.38         | 330 x 60            | 13.50 x 3.47        | 343 x 88           | 2.31    | 59     | 3.00    | 76     | 1.73    | 44     | 1.86    | 47     |
| E5PBG          | 12.50 x 3.25 x 2.75  | 317 x 83 x 70  | 22.5 mm   | 5               | 14    | 13.00 x 2.38         | 330 x 60            | 13.50 x 3.47        | 343 x 88           | 2.31    | 59     | 3.00    | 76     | 1.73    | 44     | 1.86    | 47     |
| E6PBVL         | 14.75 x 3.25 x 2.75  | 375 x 83 x 70  | 30.5 mm   | 6               | 14    | 15.25 x 2.38         | 387 x 60            | 15.75 x 3.47        | 400 x 88           | 2.31    | 59     | 3.00    | 76     | 1.73    | 44     | 1.86    | 47     |
| E6PBGVL        | 14.75 x 3.25 x 2.75  | 375 x 83 x 70  | 22.5 mm   | 6               | 14    | 15.25 x 2.38         | 387 x 60            | 15.75 x 3.47        | 400 x 88           | 2.31    | 59     | 3.00    | 76     | 1.73    | 44     | 1.86    | 47     |
| E6PB           | 9.50 x 6.25 x 3.00   | 241 x 159 x 76 | 30.5 mm   | 6               | 14    | 10.00 x 5.38         | 254 x 137           | 10.50 x 6.47        | 267 x 164          | 2.56    | 65     | 6.00    | 152    | 2.11    | 54     | 2.61    | 66     |
| E6PBG          | 9.50 x 6.25 x 3.00   | 241 x 159 x 76 | 22.5 mm   | 6               | 14    | 10.00 x 5.38         | 254 x 137           | 10.50 x 6.47        | 267 x 164          | 2.56    | 65     | 6.00    | 152    | 2.11    | 54     | 2.61    | 66     |
| E8PB           | 20.25 x 3.25 x 2.75  | 514 x 83 x 70  | 30.5 mm   | 8               | 14    | 20.75 x 2.38         | 527 x 60            | 21.25 x 3.47        | 540 x 88           | 2.31    | 59     | 3.00    | 76     | 1.73    | 44     | 1.86    | 47     |
| E8PBG          | 20.25 x 3.25 x 2.75  | 514 x 83 x 70  | 22.5 mm   | 8               | 14    | 20.75 x 2.38         | 527 x 60            | 21.25 x 3.47        | 540 x 88           | 2.31    | 59     | 3.00    | 76     | 1.73    | 44     | 1.86    | 47     |
| E9PB           | 9.50 x 8.50 x 3.00   | 241 x 216 x 76 | 30.5 mm   | 9               | 14    | 10.00 x 7.62         | 254 x 194           | 10.50 x 8.72        | 267 x 221          | 2.56    | 65     | 8.25    | 210    | 2.11    | 54     | 2.61    | 66     |
| E9PBG          | 9.50 x 8.50 x 3.00   | 241 x 216 x 76 | 22.5 mm   | 9               | 14    | 10.00 x 7.62         | 254 x 194           | 10.50 x 8.72        | 267 x 221          | 2.56    | 65     | 8.25    | 210    | 2.11    | 54     | 2.61    | 66     |
| E10PB          | 24.75 x 3.25 x 2.75  | 629 x 83 x 70  | 30.5 mm   | 10              | 14    | 25.25 x 2.38         | 641 x 60            | 25.75 x 3.47        | 654 x 88           | 2.31    | 59     | 3.00    | 76     | 1.73    | 44     | 1.86    | 47     |
| E10PBG         | 24.75 x 3.25 x 2.75  | 629 x 83 x 70  | 22.5 mm   | 10              | 14    | 25.25 x 2.38         | 641 x 60            | 25.75 x 3.47        | 654 x 88           | 2.31    | 59     | 3.00    | 76     | 1.73    | 44     | 1.86    | 47     |
| E12PB          | 11.75 x 8.50 x 3.00  | 298 x 216 x 76 | 30.5 mm   | 12              | 14    | 12.25 x 7.62         | 311 x 194           | 12.75 x 8.72        | 324 x 221          | 2.56    | 65     | 8.25    | 210    | 2.11    | 54     | 2.61    | 66     |
| E12PBG         | 11.75 x 8.50 x 3.00  | 298 x 216 x 76 | 22.5 mm   | 12              | 14    | 12.25 x 7.62         | 311 x 194           | 12.75 x 8.72        | 324 x 221          | 2.56    | 65     | 8.25    | 210    | 2.11    | 54     | 2.61    | 66     |
| E16PB          | 11.75 x 10.75 x 3.00 | 298 x 273 x 76 | 30.5 mm   | 16              | 14    | 12.25 x 9.88         | 311 x 251           | 12.75 x 10.97       | 324 x 279          | 2.56    | 65     | 10.50   | 267    | 2.11    | 54     | 2.61    | 66     |
| E16PBG         | 11.75 x 10.75 x 3.00 | 298 x 273 x 76 | 22.5 mm   | 16              | 14    | 12.25 x 9.88         | 311 x 251           | 12.75 x 10.97       | 324 x 279          | 2.56    | 65     | 10.50   | 267    | 2.11    | 54     | 2.61    | 66     |

