

**FREE-STAND, TYPE 4X**



**APPLICATION**

This single-door enclosure provides industry-leading protection for systems incorporating large components or complex mounting configurations in highly corrosive environments. The addition of 19-in. rack-mounting accessories makes these enclosures ideal for providing rugged protection for sensitive rack-mounted components in harsh industrial environments. The enclosure is typically used in food-processing plants, pharmaceutical manufacturing facilities, petrochemical plants and waste-water treatment facilities.

**SPECIFICATIONS**

- 12 gauge Type 304 or 316L stainless steel
- Seams continuously welded and ground smooth; no holes or knockouts
- Mounting channels welded horizontally to interior body sides at top, bottom and center
- Panels and rack mounting angles can be mounted anywhere along channels
- Rolled lip around three sides of door and along top of enclosure opening excludes liquids and contaminants
- Stainless steel door clamps on three sides of door assure water-tight seal
- Heavy-gauge stainless steel continuous hinge
- Stainless steel hinge pin
- Stainless steel hasp and staple provided for padlocking
- Data pocket is high-impact thermoplastic
- Heavy-duty lifting eyes are Type 316L stainless steel
- Oil-resistant door gasket
- Bonding provision on door; grounding stud on body
- Accessory mounting channel provided in enclosure top

**FINISH**

Enclosures are unpainted. Front, sides, top and back have smooth #4 brushed finish. Optional steel panels, swing-out panels, side-mounted panels, rack-mounting frames, heavy-duty panel supports and center panel supports are painted white. Optional full, half and side-mounted conductive panels are available.

**ACCESSORIES**

- See also Accessories.*
- Caster Kit
  - Clamping Nut Package
  - Drip Shield Kit for Type 12 Enclosures
  - PANELITE™ Enclosure Lights Overview

**MODIFICATION AND CUSTOMIZATION**

Hoffman excels at modifying and customizing products to your specifications. Contact your local Hoffman sales office or distributor for complete information.

**BULLETIN: A4SL**

**INDUSTRY STANDARDS**

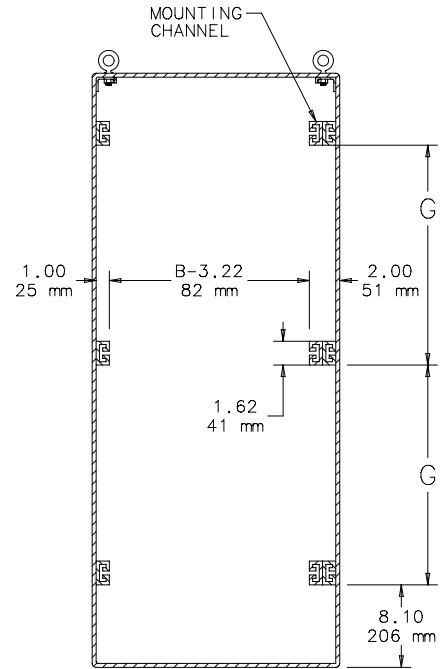
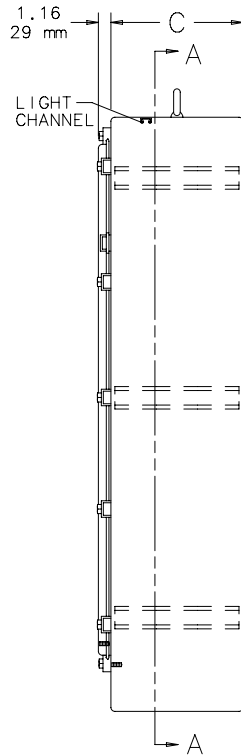
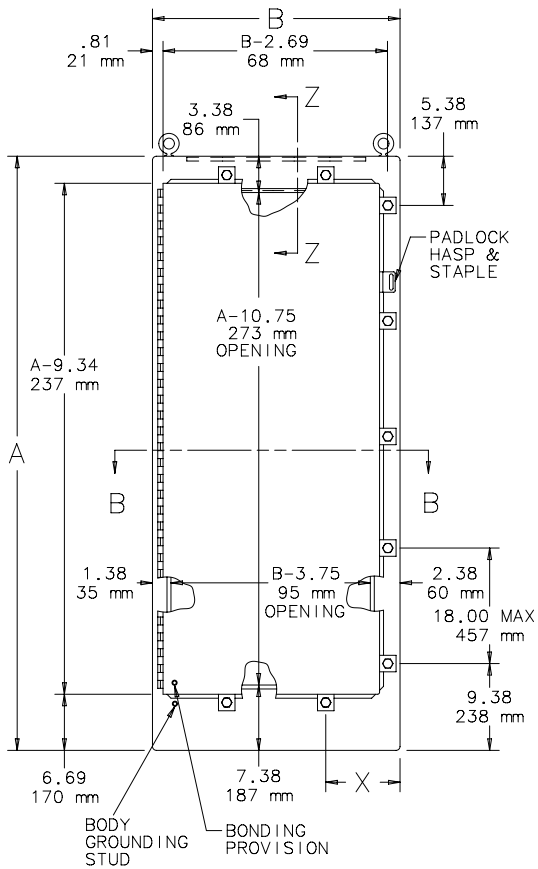
UL 508A Listed; Type 3R, 4, 4X, 12; File No. E61997  
 cUL Listed per CSA C22.2 No 94; Type 3R, 4, 4X, 12; File No. E61997

NEMA Type 3, 3R, 4, 4X, 12, 13  
 CSA File No. 42186: Type 4, 4X, 12  
 E.I.A. RS-310-D  
 IEC 60529, IP66  
 Meets NEMA Type 3RX requirements

Standard Products

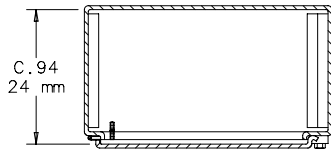
Catalog Number	AxBxC in./mm	Stainless Steel Type	X in./mm	G in./mm
A72H2518SSF5	72.06 x 25.06 x 18.06 1830 x 637 x 459	304	6.38 162	29.12 740
A72H2518SS6FS	72.06 x 25.06 x 18.06 1830 x 637 x 459	316L	6.38 162	29.12 740
A72H3124SSF5	72.06 x 31.06 x 24.06 1830 x 789 x 611	304	8.38 213	29.12 740
A72H3124SS6FS	72.06 x 31.06 x 24.06 1830 x 789 x 611	316L	8.38 213	29.12 740
A72H3724SSF5	72.06 x 37.06 x 24.06 1830 x 941 x 611	304	10.38 264	29.12 740
A72H3724SS6FS	72.06 x 37.06 x 24.06 1830 x 941 x 611	316L	10.38 264	29.12 740

Purchase panels and accessories separately.

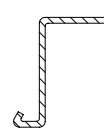


SECTION A-A

- NOTE: 1. Maximum spacing between clamps is 18.00 (457mm).  
 See General Accessories chapter for section views A-A and B-B showing accessories.  
 2. Removable data pocket is 12.00 x 12.00 (305mm x 305mm).



SECTION B-B



C2568-C

SECTION Z-Z