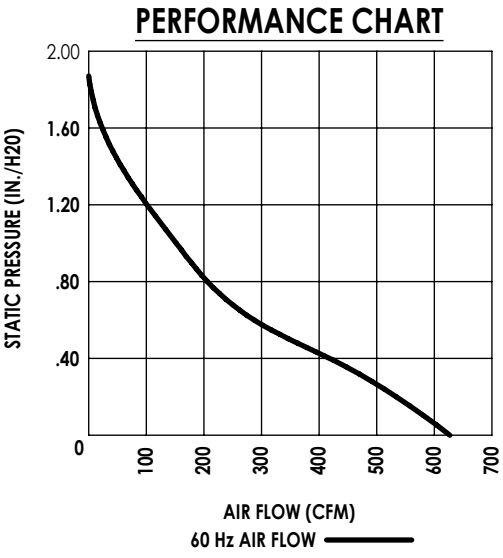
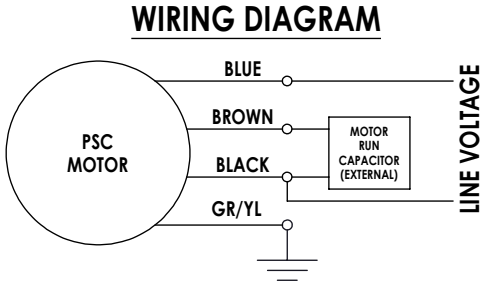
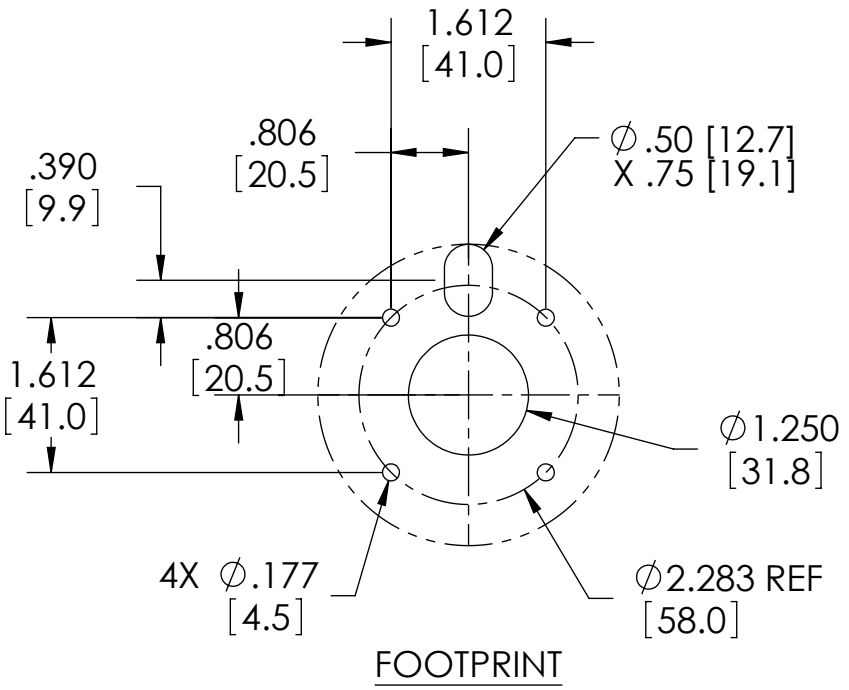
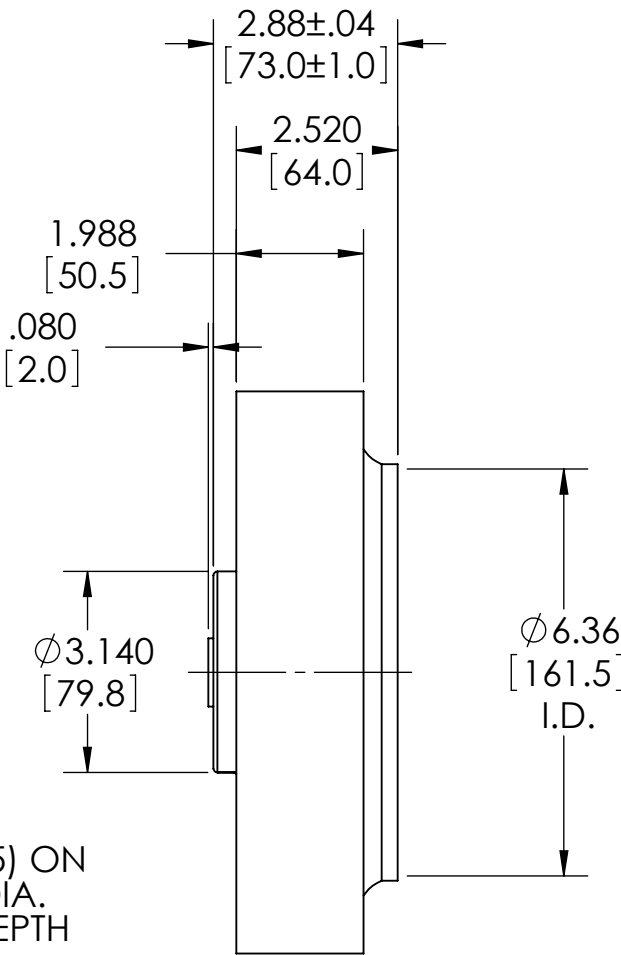
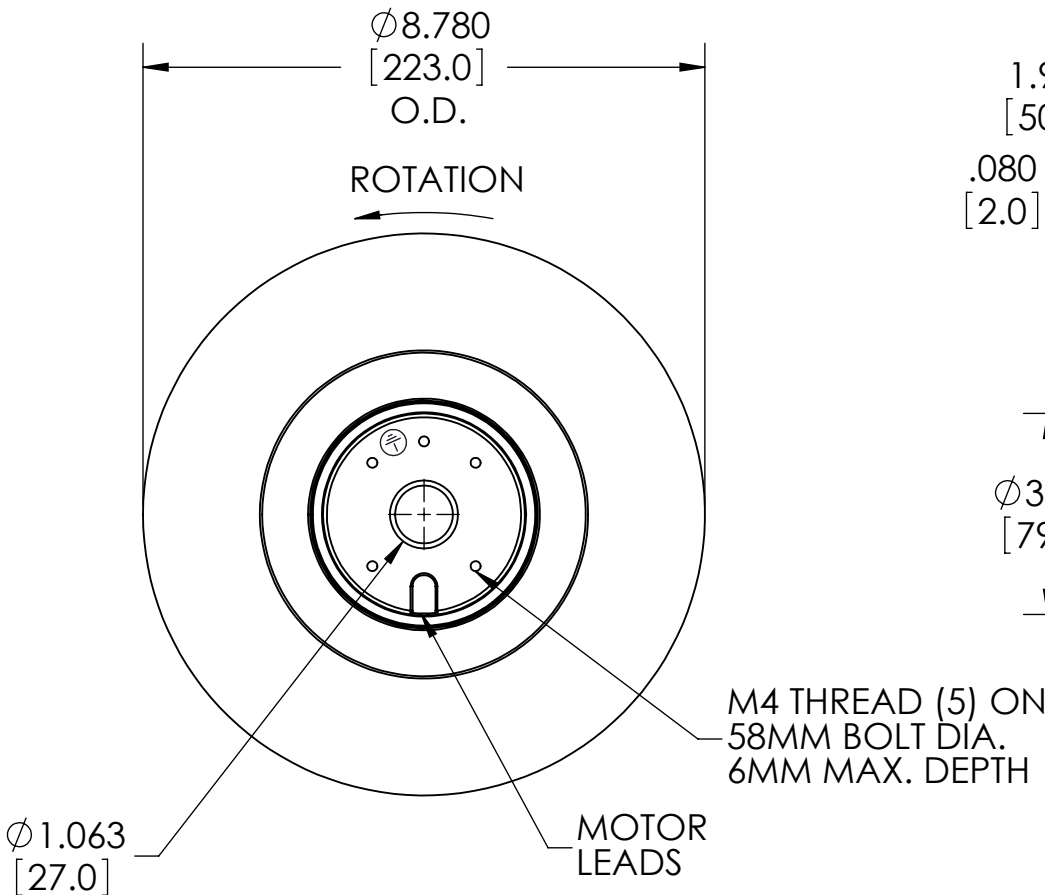


SPECIFICATION: MOTORIZED IMPELLER
DIMENSIONS IN INCHES AND [MM]
VOLTAGE: 115V±10%, 60 Hz., 10µF CAPACITOR
CFM @ 0 IN.: 627 (ER 3088)
ROTATION: CLOCKWISE AS VIEWED FROM THE INLET
WEIGHT: 3.5 LBS.
DUAL PLANE DYNAMICALLY BALANCED: .011 OZ.IN. [.3 G] /PLANE
(MOTOR AND IMPELLER TOGETHER)
RUNOUT OF DISCS AND AXIS: .05 [1.2] MAX
AGENCY: UL, CUL
UL FILE: E306282
BEARINGS: DOUBLE SHIELDED PERMANENTLY LUBRICATED BALL BEARING
PER SPECIFICATION ABEC 1.TEMP RANGE: -40°C TO 130°C
L10 LIFE: IN EXCESS OF 40,000 HOURS.
INSULATION: TOTALLY ENCLOSED WITH CLASS F INSULATION
IMPELLER: BACKWARD CURVED, 11 BLADES
IMPELLER MATERIAL: POLYAMIDE 66 RESIN, BLACK
LEADS: 54 [1370]±.75 LONG, 20 GA., 200C, 300V,
JACKETED CORD, JACKET CUT BACK 7 [178]±1.25,
LEADS STRIPPED .38 [10]±.12
AMBIENT TEMP.: -25 - 60°C
LOCKED ROTOR CURRENT: 1.35A
NOISE: 68 dbA @ 3FT.



| NAMEPLATE DATA | |
|-------------------------------|--|
| 115V-60Hz-0.93A -107W-2610RPM | |
| FJ220A0000-10µF-250V-CLASS F | |
| thermally protected | |

| | | | | | | |
|--|--|--|--|----------------------------|--------|-----|
| PART NO. 10-1091-123 | | I | UPDATE TITLE BLOCK, ADD PRESS HEIGHT TOLERANCE | ECO-148617 | 5/8/13 | RLR |
| MATERIAL NA SEE NOTES | | REV | DESCRIPTION | ECO/PDP | DATE | BY |
| FINISH NA | | PENTAIR Pentair Equipment Protection 2100 Hoffman Way Minneapolis, Minnesota 55303 United States | | | | |
| TOLERANCE UNLESS NOTED ONE PLACE .X ±.1 TWO PLACE .XX ±.03 THREE PLACE .XXX ±.015 HOLE DIA ±.005 ANGLES ±2° | | SCALE NONE DRAWN JS CHECKED --- APPROVED --- | | TITLE MI 220 115V FANSTECH | | |
| SolidWorks Drawing | | DATE 2/2/12 | | SIZE B | | |
| THIRD ANGLE PROJECTION | | DO NOT SCALE DRAWING | | DRAWING NO. 87978202 | | |
| | | | | SHEET 1 OF 1 | | |

PROPRIETARY AND CONFIDENTIAL
THE INFORMATION CONTAINED IN THIS DRAWING IS THE SOLE PROPERTY OF PENTAIR EQUIPMENT PROTECTION. ANY REPRODUCTION IN PART OR AS A WHOLE WITHOUT THE WRITTEN PERMISSION OF PENTAIR EQUIPMENT PROTECTION IS PROHIBITED.