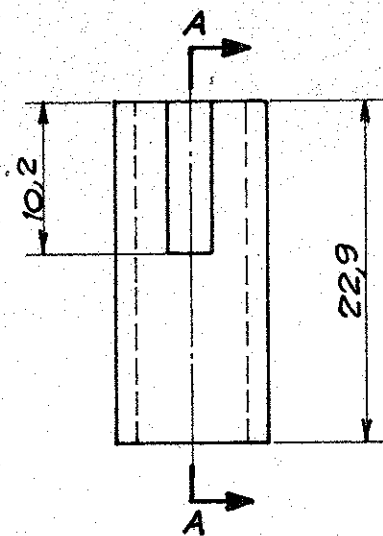
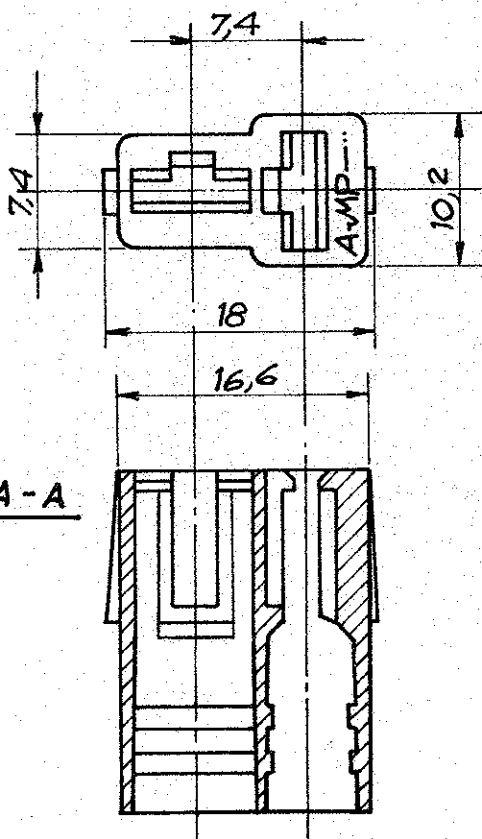


NUMBER
C-180907



Section A-A

NOTES	COLOUR	MATERIAL	PART NUMBER	
U.L. Approved	Black	Nylon 6.6 Zytel 101L	1-180907-5	OBSOLETE
	Yellow		1-180907-4	
	Blue		1-180907-3	
	Green		1-180907-2	OBSOLETE
	Red		1-180907-1	OBSOLETE
	Natural		1-180907-0	
/	BLACK	Polyamide 6.6	180907-5	
	YELLOW		180907-4	
	BLUE		180907-3	
	GREEN		180907-2	OBSOLETE
	RED		180907-1	
	NATURAL		180907-0	

DIMENSIONS IN MM. DO NOT SCALE PRINT

AA	Revised ETOO-0313-97 A.F.	05.9 1997	
K	Added Dash Numbers U.L. Approved.	EB	26-2 90
J	Revised	EB	9-9 83
H	ADDED PIN 180907-2	<i>Jeff</i>	2-77
G	UP DATED	<i>Bm</i>	18th JAN. 77
F	REVISED AND REDRAWN	<i>Bm</i>	8th JULY 75
LTR	REVISION RECORD	DR	CHK DATE
DE	<i>Barofande</i> 8th JULY 75	DE	
APP	<i>Jeff</i> JUNE 76	APP	

© 1975 BY AMP INCORPORATED. ALL RIGHTS RESERVED. AMP PRODUCTS COVERED BY PATENTS AND/OR PATENTS PENDING.

MATERIAL AND FINISH

SEE TABLE

WIRE RANGE INSULATION

TOLERANCE EXCEPT AS NOTED ±0.4 ±1° 0'

SCALE 2:1

LOC I

NO A

C-180907

AMP ITALIA VIA CERVI 15 COLLEGNO (TORINO)

CLASS .250 SERIES

TYPE

NAME 2 WAY FASTIN-ON REC. HOUSING

CUSTOMER COPY REFERENCE ONLY