

### 14-131.0252 - Illuminated pushbutton actuator



*Attention: The preview is based on a sample product. This can differ from your current configuration.*

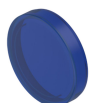
#### necessary components



**704.600.1**  
Front ring



**704.609.9**  
Marking plate for lens plastic and metal

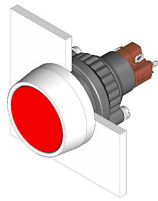


**704.602.6**  
Lens plastic

# EAO – Your Expert Partner for Human Machine Interfaces

## 14-131.0252 - Illuminated pushbutton actuator

### 14-131.0252 - Illuminated pushbutton actuator



*Attention: The preview is based on a sample product. This can differ from your current configuration.*

#### Mounting

Mounting cut-out  
Design Ø 22,3 mm  
raised

#### Front

Front dimension  
Front shape Ø 29 mm  
round

#### Other Attributes

Weight 0,013 kg

#### Operating-/Indication part

Lens illumination illuminative

#### IP-Rating

Front protection IP67

#### Connection Method

Terminal Solder

#### Actuator

Switching action Momentary  
Housing colour black  
Housing material Plastic

#### Switching element

Switching system Snap-action switching element  
Switching current 5 A  
Contacts 1 NC + 1 NO  
Contact material  
Switching voltage 250 V AC

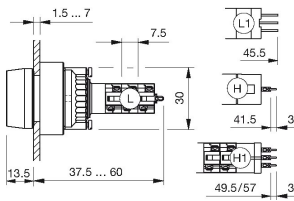
#### Function

Illuminated pushbutton

# EAO – Your Expert Partner for Human Machine Interfaces

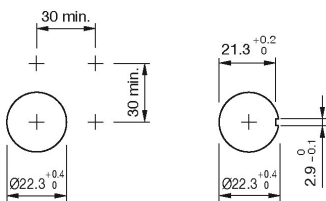
14-131.0252 - Illuminated pushbutton actuator

## Dimensions

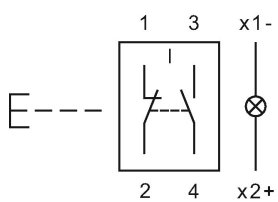


L = Solder terminal

## Mounting cut-outs



## Wiring diagram



## Legend

Contacts: NC = Normally closed, NO = Normally open  
Switching action: B = Momentary

# EAO – Your Expert Partner for Human Machine Interfaces

14-131.0252 - Illuminated pushbutton actuator

## 704.600.1 - Front ring



*Attention: The preview is based on a sample product. This can differ from your current configuration.*

### Mounting

Mounting cut-out mm  
Design raised

### Front

Front shape round  
Front dimension Ø 29 mm  
Front ring material Aluminium  
Front ring colour natural anodized

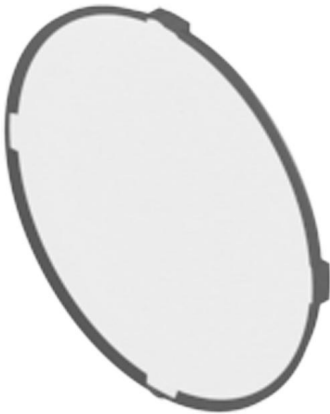
### Other Attributes

Weight 0,005 kg

# EAO – Your Expert Partner for Human Machine Interfaces

14-131.0252 - Illuminated pushbutton actuator

## 704.609.9 - Marking plate for lens plastic and metal



*Attention: The preview is based on a sample product. This can differ from your current configuration.*

## Other Attributes

Weight	0,001 kg
Marking plate colour	white
Marking plate material	Plastic
Marking plate optics	translucent
Marking plate illumination height	illuminative round, flush

# EAO – Your Expert Partner for Human Machine Interfaces

14-131.0252 - Illuminated pushbutton actuator

## 704.602.6 - Lens plastic



*Attention: The preview is based on a sample product. This can differ from your current configuration.*

### Other Attributes

Weight	0,001 kg
Dimension	Ø 23.7 mm
height	round, flush

### Operating-/Indication part

Lens optics	transparent
Lens colour	blue
Lens material	Plastic
Lens profile	flat
Lens illumination	illuminative