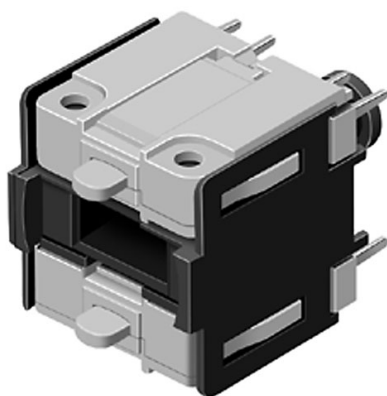


EAO – Your Expert Partner for Human Machine Interfaces

71-671.026 - Switching element for illuminated pushbutton and mushroom-head pushbutton



Attention: The preview is based on a sample product. This can differ from your current configuration.

Other Attributes

Weight 0.005 kg

Connection Method

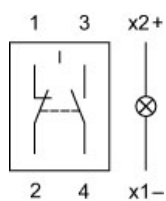
Terminal PCB

Switching element

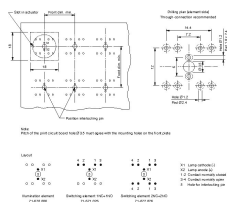
Switching system Snap-action switching element
Contacts 1 NC + 1 NO
Switching current 3 A
Contact material Gold
Switching voltage 250 V AC

EAO – Your Expert Partner for Human Machine Interfaces

Wiring diagram



Component layout



Additional information

Including locking pin