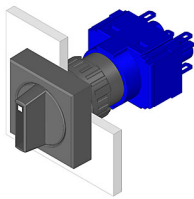


EAO – Your Expert Partner for Human Machine Interfaces

61-4610.0 - Selector switch actuator 3 positions square

61-4610.0 - Selector switch actuator 3 positions square



Attention: The preview is based on a sample product. This can differ from your current configuration.

Mounting

Mounting cut-out \varnothing 16 mm

Other Attributes

Weight 0.006 kg

Operating-/Indication part

Switching angle C = 90° / 90°

IP-Rating

Front protection IP 65

Actuator

Switching action Maintained - Rest - Maintained

Switching element

Rotary positions 3

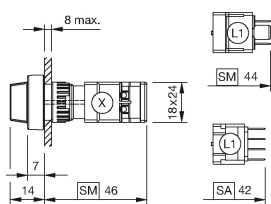
Function

Selector switch

EAO – Your Expert Partner for Human Machine Interfaces

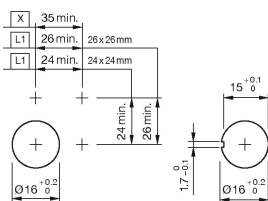
61-4610.0 - Selector switch actuator 3 positions square

Dimensions



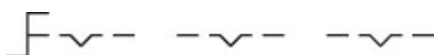
L1 = Solder/Plug-in terminal 2.8 x 0.5 mm

Mounting cut-outs

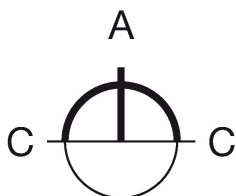


L1 = Solder/Plug-in terminal 2.8 x 0.5 mm

Wiring diagram



Switching positions



Additional information

illuminative

If mounted with anti-twist device, the lug is on the left side

Anti-twist ring not needed by using anti-twist device

Legend

Switching action: A = Rest, C = Maintained