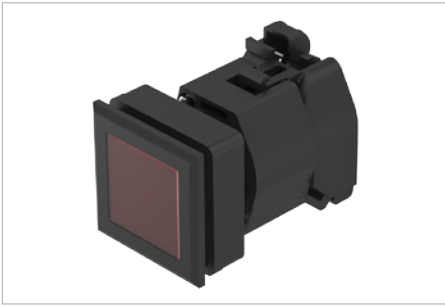
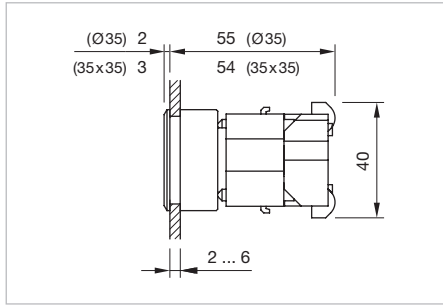


04 Flush design

Indicator, IP65



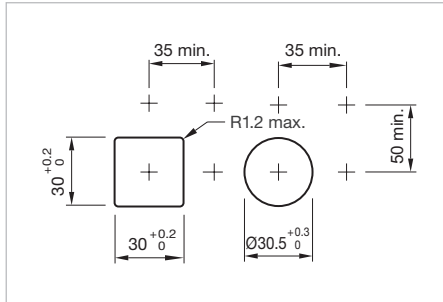
Product can differ from the current configuration.



Dimensions [mm]

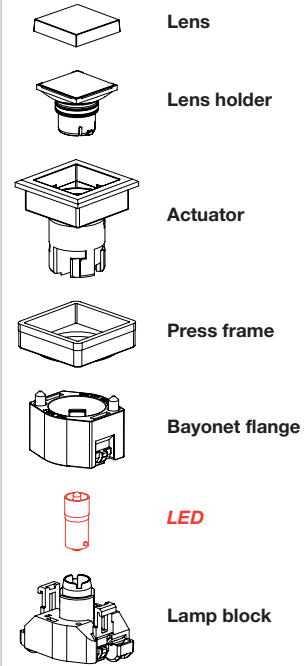
Additional Information

- Housing plastic black
- The colour of anodized aluminium parts can vary due to technical production reasons





Mounting cut-outs [mm]

Equipment consisting of (schematic overview)



Each Part Number listed below includes all the black components shown in the 3D-drawing.

To obtain a complete unit, please select the red components from the pages shown.

| Front ring | Front bezel | Lens | Terminal | Part No. | Wiring diagram | Weight |
|---|---|--------------------|----------|--------------------|----------------|----------|
|  | Indicator actuator, Front dimension 35 x 35 mm | | | | | |
| | Plastic black | Plastic red | Screw | 704.206.200 | 1 | 0.061 kg |
| | | Plastic yellow | Screw | 704.206.400 | 1 | 0.061 kg |
| | | Plastic green | Screw | 704.206.500 | 1 | 0.061 kg |
| | | Plastic blue | Screw | 704.206.600 | 1 | 0.061 kg |
| | | Plastic colourless | Screw | 704.206.700 | 1 | 0.061 kg |
|  | Indicator actuator, Front dimension 35 x 35 mm | | | | | |
| | Plastic silver | Plastic red | Screw | 704.202.208 | 1 | 0.061 kg |
| | | Plastic yellow | Screw | 704.202.408 | 1 | 0.061 kg |
| | | Plastic green | Screw | 704.202.508 | 1 | 0.061 kg |
| | | Plastic blue | Screw | 704.202.608 | 1 | 0.061 kg |
| | | Plastic colourless | Screw | 704.202.708 | 1 | 0.061 kg |