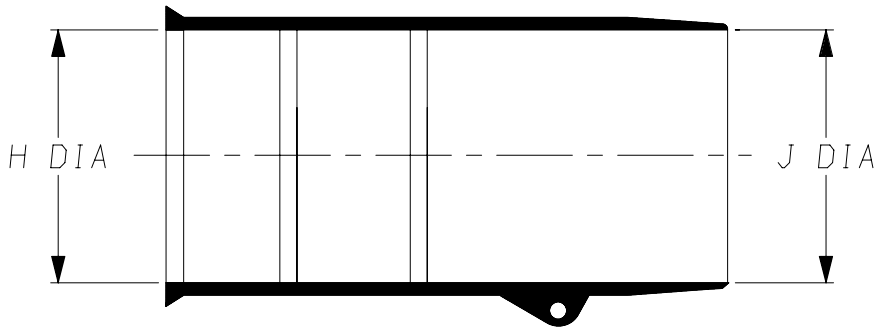
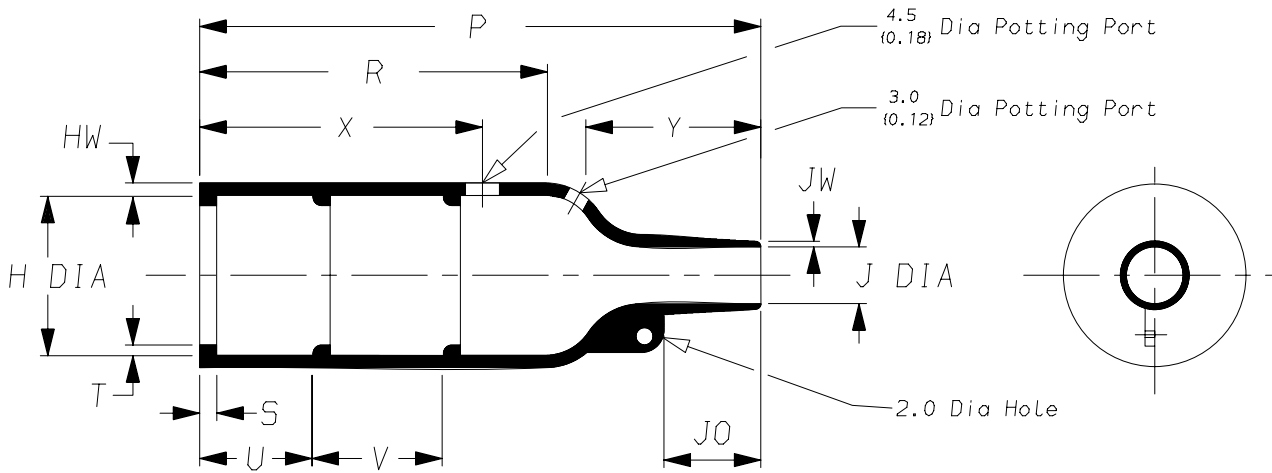


a) Part as supplied.

202K1**



b) Part after unrestricted recovery.



DIMENSIONS in millimetres
(in inches, for reference)

Part No.	H		J		P	R	S	T	U&V	JO	HW	JW	X	Y
	Min a	Max b	Min a	Max b										
① 202K121	24 (0.94)	10.4 (0.41)	24 (0.94)	5.6 (0.22)	±10% 38 (1.50)	±10% 21 (0.83)	±10% 3.0 (0.12)	±10% 1.0 (0.04)	±10% 12 (0.47)	±10% 8.5 (0.33)	±20% 1.6 (0.06)	±20% 0.9 (0.04)	±20% 24 (0.94)	±20% 13 (0.51)
① 202K132	30 (1.18)	14.2 (0.56)	30 (1.18)	5.9 (0.23)	±10% 55 (2.17)	±10% 32 (1.26)	±10% 3.0 (0.12)	±10% 1.0 (0.04)	±10% 12 (0.47)	±10% 11.5 (0.45)	±20% 1.8 (0.07)	±20% 1.0 (0.04)	±20% 24 (0.94)	±20% 18 (0.71)
① 202K142	31 (1.22)	18.0 (0.71)	31 (1.22)	7.1 (0.28)	±10% 67 (2.64)	±10% 35 (1.38)	±10% 3.0 (0.12)	±10% 1.0 (0.04)	±10% 20 (0.79)	±10% 17.0 (0.67)	±20% 1.8 (0.07)	±20% 1.0 (0.04)	±20% 32 (1.26)	±20% 25 (0.98)
① 202K153	36 (1.42)	22.4 (0.88)	36 (1.42)	8.4 (0.33)	±10% 80 (3.15)	±10% 42 (1.65)	±10% 3.0 (0.12)	±10% 1.0 (0.04)	±10% 20 (0.79)	±10% 19.5 (0.77)	±20% 2.0 (0.08)	±20% 1.0 (0.04)	±20% 32 (1.26)	±20% 30 (1.18)
202K163	43 (1.69)	28.2 (1.11)	43 (1.69)	9.9 (0.39)	±10% 99 (3.90)	±10% 61 (2.40)	±10% 3.0 (0.12)	±10% 1.7 (0.07)	±10% 20 (0.79)	±10% 21.0 (0.83)	±20% 2.2 (0.09)	±20% 1.2 (0.05)	±20% 52 (2.05)	±20% 30 (1.18)
202K174	60 (2.36)	35.1 (1.38)	60 (2.36)	15.7 (0.62)	±10% 130 (5.12)	±10% 72 (2.83)	±10% 3.0 (0.12)	±10% 1.7 (0.07)	±10% 20 (0.79)	±10% 39.0 (1.54)	±20% 3.2 (0.13)	±20% 1.5 (0.06)	±20% 52 (2.05)	±20% 50 (1.97)
202K185	66 (2.60)	44.5 (1.75)	66 (2.60)	16.8 (0.66)	±10% 170 (6.69)	±10% 90 (3.54)	±10% 3.0 (0.12)	±10% 2.0 (0.08)	±10% 20 (0.79)	±10% 51.5 (2.03)	±20% 3.8 (0.15)	±20% 2.0 (0.08)	±20% 52 (2.05)	±20% 70 (2.76)

② See over for explanation of Notes ① and ②

Copyright (!)

The copyright in this drawing is the property of Tyco Electronics UK Ltd. The drawing is issued on the condition that it is not copied, reproduced or disclosed to a third party, either in whole or in part without the prior written consent of Tyco Electronics UK Ltd.

Drawn A.LILLEY. Checked

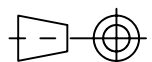
Issue 15 Date April 2007

Conforms to ISO Recommendations
3rd Angle Projection
Not to Scale

Approval
Design

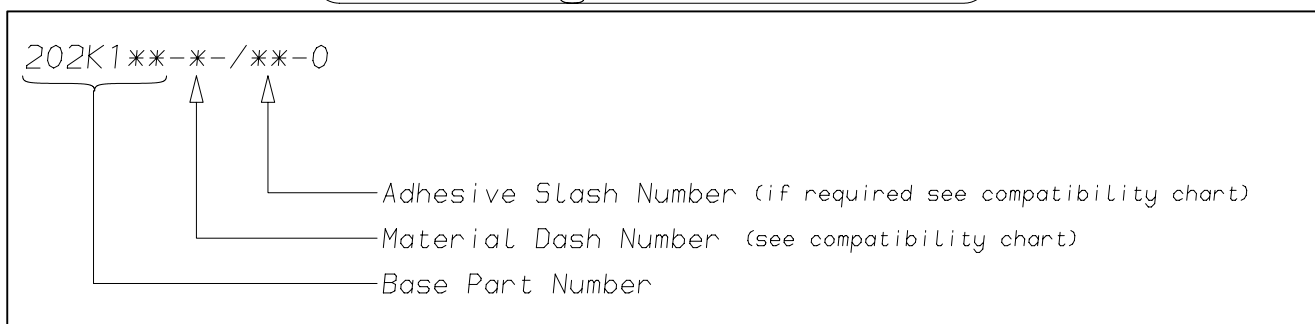
MKTG.

Q.A.



Iss.	Date	E.C.R. No.	Details of Change
7	August 1986	4865	Jo Dimension moved, & 2.0 Dia note added
8	August 1986	4865	Jo dimension changed
9	February 2000	CR00-HM-0001	Injection point note added
10	April 2001	CR01-HM-0008	Redrawn to include inches
11	February 2002	CR02-HM-0003	/180 added to -3 & -4
12	March 2002	CR02-HM-0001	Note ⑨ added (on 121 JW is 0.9 for -25)
13	June 2002	CR02-HM-0001v2	Note ⑨ removed
14	February 2005	H0307	JW was 1.0
15	April 2007	CR07-HM-010	Document title was 202K121 thru 185

Ordering Information



COMPATIBILITY CHART

Material Dash Number	Material Description	SPEC Number	Coating Slash Number
-3	POLYOLEFIN, SEMI-RIGID	RT-301, RK-6703	/42, /86, /180
-4	POLYOLEFIN, FLEXIBLE	RT-1304 RT-1050	/42, /86, /180
-6	SILICON	RT-602, RK-6706	N/A
-25	ELASTOMER, FLUID RESISTANT	RT-1325, RK-6713	/42, /86, /225
-130	POLYOLEFIN, COMMERCIAL FLEXIBLE	RW-2008	/42

NOTES

- ① Supplied with 2 lips only, Dimension V does not apply.
- ② Potting Port X @ 90° to Potting Port Y on 202K121.
- ③ If eyelet clip (000W212) is required with part then add CS-1858 to description (i.e. 202K132-3-CS-1858-0).
- ④ As supplied dimensions are for uncoated parts, when coating is added entry diameters will reduce by 1.5mm Max.
- ⑤ Potting Ports are optional, when specified by suffix -00 they will be located as shown.
- ⑥ For -12 SCD see 202K1**-12.
- ⑦ For -100 SCD see 202K1**-100.
- ⑧ On some parts a bump or depression at the material injection point may exist as a normal manufacturing process.

Tyco Electronics UK Ltd. Faraday Road, Swindon, Wiltshire, SN3 5HH England Telephone: (01793) 528171 Fax: 572516	Tyco Electronics Corporation 300, Constitution Drive, Menlo Park, CA 94025 USA Telephone (650) 361-3860 Fax: (650) 361-5579
Cage Code K1010	Cage Code 06090