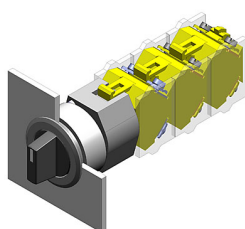


EAO – Your Expert Partner for Human Machine Interfaces

704.411.018I - Selector switch actuator illuminable, 2 positions, short lever

704.411.018I - Selector switch actuator illuminable, 2 positions, short lever



Attention: The preview is based on a sample product. This can differ from your current configuration.

Mounting

Mounting cut-out	Ø 30.5 mm
Design	flush

Front

Front dimension	Ø 35 mm
Front shape	round
Front ring material	Aluminium
Front ring colour	natural anodized

Other Attributes

Weight	0.056 kg
--------	----------

Operating-/Indication part

Lever material	Plastic
Lever colour	black
Switching angle	C = 90°

IP-Rating

Front protection	IP 67
------------------	-------

Actuator

Switching action	Rest - Maintained
------------------	-------------------

Switching element

Rotary positions	2
------------------	---

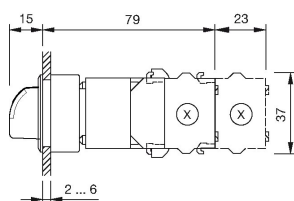
Function

Selector switch

EAO – Your Expert Partner for Human Machine Interfaces

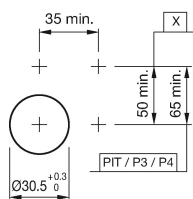
704.411.018I - Selector switch actuator illuminable, 2 positions, short lever

Dimensions



X = Screw terminal

Mounting cut-outs

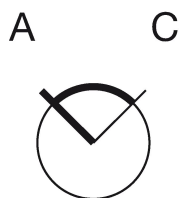


PIT = Push-in terminal

Wiring diagram



Switching positions



Additional information

Max. 3 switching elements can be clipped on
The colour of anodized aluminium parts can vary due to technical
production reasons

Legend

Switching action: A = Rest, C = Maintained