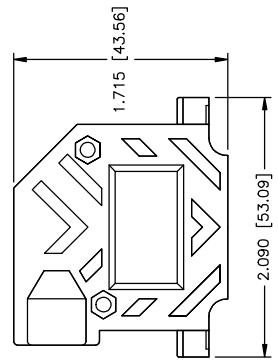
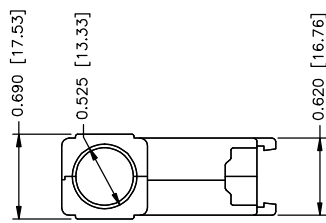
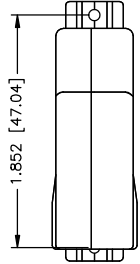


REVISIONS

ZONE	REV	DESCRIPTION	DATE	APPROVED

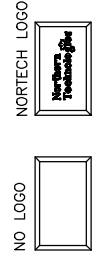
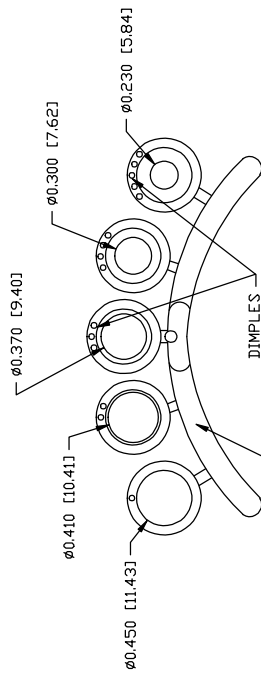


#4-40 X 7/16" FILLISTER HEAD MACHINE SCREW
 MATERIAL - STEEL
 FINISH - BRIGHT ZINC
 QTY: 2 EACH

#4-40 #2 BLANK HEX NUT
 MATERIAL - STEEL
 FINISH - BRIGHT ZINC
 QTY: 2 EACH

#4-40 X 1.94 THUMBSCREW
 MATERIAL - STEEL
 FINISH - BRIGHT ZINC
 QTY: 1 EACH

#4-40 X 0.84 THUMBSCREW
 MATERIAL - STEEL
 FINISH - BRIGHT ZINC
 QTY: 1 EACH



PART NUMBER INFORMATION

PART#	LOGO STYLE	SUPPLIED
NA30E42000T3	NO LOGO TOP COVER	BULK
NA30E421000T3	NORTECH LOGO TOP COVER*	BULK
NA30E420100	BOTTOM COVER	BULK
N88E42000T3	NO LOGO	PACKAGED
N88E421000T3	NORTECH LOGO*	PACKAGED

*CONTACT NORTHERN TECHNOLOGIES

CONNECTOR COVER:

- 1.MATERIAL: ZINC ALLOY
- 2.FINISH: NICKEL OVER COPPER UNDER-PLATE PER NTC SPECIFICATION N/T 000400
- 3.DIMENSIONS: INCHES [MM]
- 4.TOLERANCE: ±0.015 [0.381]

COMPRESSION INSERT TREE

- 1.MATERIAL: THERMOPLASTIC
- 2.COLOR: BLACK
- 3.DUROMETER: 75 ±5 TYPE A PER ASTM D2240
- 4.DIMENSIONS: INCHES [MM]
- 5.TOLERANCE: ±0.020 [0.508]

UNLESS OTHERWISE SPECIFIED
 1. ALL DIMENSIONS ARE IN INCHES (MM)
 2. DIMENSIONS ARE TYPICAL

THIS IS A CONTROLLED DOCUMENT AND IS SUBJECT TO CHANGE. CONTACT NORTHERN TECHNOLOGIES ENGINEERING FOR THE LATEST REVISION.

Northern Technologies

THIS DRAWING IS THE PROPERTY OF NORTHERN TECHNOLOGIES AND SHALL NOT BE REPRODUCED WITHOUT NORTHERN TECHNOLOGIES' WRITTEN PERMISSION.

PART NUMBER SEE PART NUMBER INFORMATION

DESCRIPTION CMR 25 RIGHT ANGLE COVER W/THUMBSCREWS

DRAWN	JSD	02-JAN-13
CHECKED	SCN	02-JAN-13
ISSUED		02-JAN-13

SIZE	CODE	DWG NO.	REV
B	200_106NT3	0002-200-106NT3	

SCALE 1:1 SHEET 1 OF 1