

# 3.2 EPIC® D A - V I N C I H - B

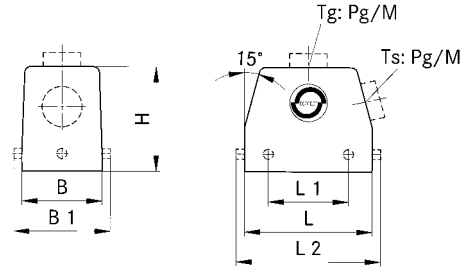
## Gehäuse / Hood / Capot



**PG**



**M**



**EPIC® H-B Gehäuse: Tüllengehäuse (Kabeleingang gerade, Bolzen für Längsbügel)**

*EPIC® H-B housings: hood (top entry, bolts for single locking lever)*

*Boîtiers EPIC® H-B: capot (sortie verticale, ergots pour simple levier)*

### H-B 6

Artikel part article	Art.Nr. part No. N° art.	PG	M	ZW	L	L1	L2	L3	L4	B	B1	B2	B3	B4	B5	H	H1	H2	S	d
H-B 6 TG 13,5	<b>10011000</b>	13,5		●	60		74,8			43					45					52
H-B 6 TG 16	<b>10021000</b>	16		●																
H-B 6 TG M20	<b>19011000</b>		20		60		74,8			43										52
H-B 6 TG M25	<b>19021000</b>		25																	

Einsätze / Inserts / Inserts: 1.4: H-BE 6 / 1.5: H-EE 10 / 1.9: H-DD 24 / 1.10: MC 6

Deckel / Cover / Couvercle: 6.1: H-BE 6

Kabelverschraubung / Cable gland / Presse-étoupe: 5.1: Metr. & PG

### H-B 10

Artikel part article	Art.Nr. part No. N° art.	PG	M	ZW	L	L1	L2	L3	L4	B	B1	B2	B3	B4	B5	H	H1	H2	S	d
H-B 10 TG-RO 16	<b>10040900</b>	16		●	73		90			43					45					52
H-B 10 TG-RO 21	<b>10040700</b>	21		●																
H-B 10 TG-RO M20	<b>19040900</b>		20		73		90			43					45					52
H-B 10 TG-RO M25	<b>19040700</b>		25																	

Einsätze / Inserts / Inserts: 1.4: H-BE 10 / 1.5: H-EE 18 / 1.7: H-BVE 3 / 1.9: H-DD 42 / 1.10: MC 10

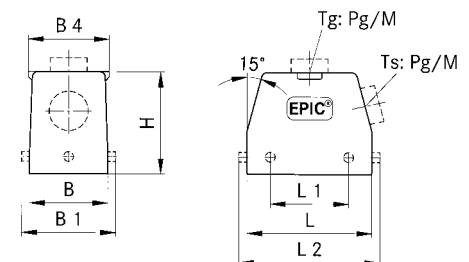
Kabelverschraubung / Cable gland / Presse-étoupe: 5.1: Metr. & PG



**PG**



**M**



### H-B 16

Artikel part article	Art.Nr. part No. N° art.	PG	M	ZW	L	L1	L2	L3	L4	B	B1	B2	B3	B4	B5	H	H1	H2	S	d
H-B 16 TG-RO 21	<b>10080900</b>	21		●	93,3		110			43										61
H-B 16 TG-RO M25	<b>19080900</b>		25		93,3		110			43										61

Einsätze / Inserts / Inserts: 1.4: H-BE 16 / 1.5: H-EE 32 / 1.6: H-BS 6 / 1.7: H-BVE 6 / 1.8: H-D 40 / 1.9: H-DD 72 / 1.10: MC 16

Kabelverschraubung / Cable gland / Presse-étoupe: 5.1: Metr. & PG

# 3.2 EPIC® D A - V I N C I H - B

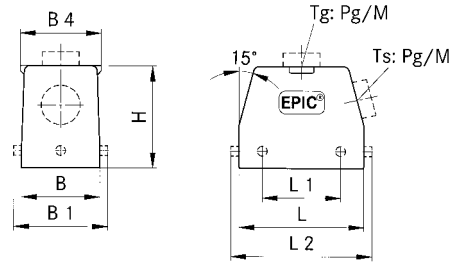
## Gehäuse / Hood / Capot



**PG**



**M**



**EPIC® H-B Gehäuse: Tüllengehäuse (Kabeleingang gerade, Bolzen für Längsbügel)**

*EPIC® H-B housings: hood (top entry, bolts for single locking lever)*

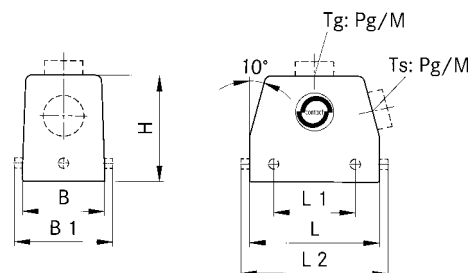
*Boîtiers EPIC® H-B: capot (sortie verticale, ergots pour simple levier)*

### H-B 24

Artikel part article	Art.Nr. part No. N° art.	PG	M	ZW	L	L1	L2	L3	L4	B	B1	B2	B3	B4	B5	H	H1	H2	S	d
H-B 24 TG-RO 21	<b>10121900</b>	21		●	120		137			43				45		61				
H-B 24 TG-RO 29	<b>10111900</b>	29		●																
H-B 24 TG-RO M25	<b>19121900</b>		25		120		137			43				45		61				
H-B 24 TG-RO M32	<b>19111900</b>		32																	

Einsätze / Inserts / Inserts: 1.4: H-BE 48 / 1.5: H-EE 46 / 1.7: H-BVE 10 / 1.8: H-D 64 / 1.9: H-DD 108 / 1.10: MC 24

Kabelverschraubung / Cable gland / Presse-étoupe: 5.1: Metr. & PG



### H-B 48

Artikel part article	Art.Nr. part No. N° art.	PG	M	ZW	L	L1	L2	L3	L4	B	B1	B2	B3	B4	B5	H	H1	H2	S	d
H-B 48 TG 29	<b>10155000</b>	29		●																
H-B 48 TG 36	<b>10156000</b>	36		●	132		152			90				45		105				
H-B 48 TG 36	<b>10156200</b>	36																		
H-B 48 TG 42	<b>10157000</b>	42																		
H-B 48 TG M32	<b>19155000</b>		32																	
H-B 48 TG M40	<b>19156000</b>		40		132		152			90				45		105				
H-B 48 TG M50	<b>19157000</b>		50																	

Einsätze / Inserts / Inserts: 1.4: H-BE 48 / 1.5: H-EE 92 / 1.7: 2 x H-BVE 10 / 1.8: H-D 128 / 1.9: H-DD 216 / 1.10: 2 x MC 24

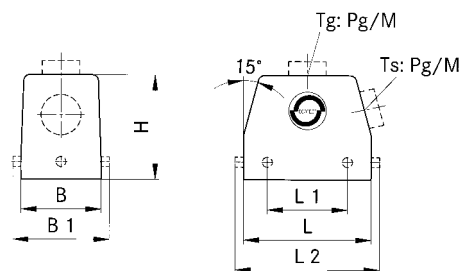
Kabelverschraubung / Cable gland / Presse-étoupe: 5.1: Metr. & PG

# 3.2 EPIC® D A - V I N C I H - B

## Gehäuse / Hood / Capot



PG / M



**EPIC® H-B Gehäuse: Tüllengehäuse (Kabeleingang seitlich, Bolzen für Längsbügel)**

*EPIC® H-B housings: hood (side entry, bolts for single locking lever)*

*Boîtiers EPIC® H-B: capot (sortie latérale, ergots pour simple levier)*

### H-B 6

Artikel part article	Art.Nr. part No. N° art.	PG	M	ZW	L	L1	L2	L3	L4	B	B1	B2	B3	B4	B5	H	H1	H2	S	d
H-B 6 TS 13,5	<b>10012000</b>	13,5		●	60		74,8			43						52				
H-B 6 TS 16	<b>10022000</b>	16		●																
H-B 6 TS M20	<b>19012000</b>		20	●	60		74,8			43						52				
H-B 6 TS M25	<b>19022000</b>		25	●																

Einsätze / Inserts / Inserts: 1.4: H-BE 6 / 1.5: H-EE 10 / 1.9: H-DD 24 / 1.10: MC 6

Deckel / Cover / Couvercle: 6.1: H-B 6

Kabelverschraubung / Cable gland / Presse-étoupe: 5.1: Metr. & PG

### H-B 10

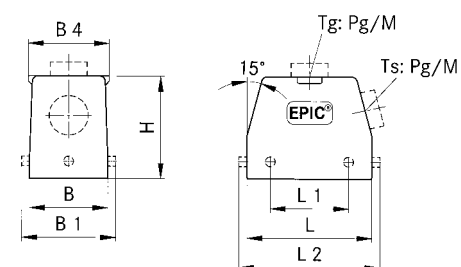
Artikel part article	Art.Nr. part No. N° art.	PG	M	ZW	L	L1	L2	L3	L4	B	B1	B2	B3	B4	B5	H	H1	H2	S	d
H-B 10 TS-RO 16	<b>10042900</b>	16		●	73		90			43						52				
H-B 10 TS-RO 21	<b>10042800</b>	21		●																
H-B 10 TS-RO M20	<b>19042900</b>		20	●	73		90			43						52				
H-B 10 TS-RO M25	<b>19042800</b>		25	●																

Einsätze / Inserts / Inserts: 1.4: H-BE 10 / 1.5: H-EE 18 / 1.7: H-BVE 3 / 1.9: H-DD 42 / 1.10: MC 10

Kabelverschraubung / Cable gland / Presse-étoupe: 5.1: Metr. & PG



PG / M



### H-B 16

Artikel part article	Art.Nr. part No. N° art.	PG	M	ZW	L	L1	L2	L3	L4	B	B1	B2	B3	B4	B5	H	H1	H2	S	d
H-B 16 TS-RO 21	<b>10082900</b>	21		●	93,3		110			43				45		61				
H-B 16 TS-RO 29	<b>10092900</b>	29		●																
H-B 16 TS-RO M25	<b>19082900</b>		25	●	93,3		110			43				45		61				
H-B 16 TS-RO M32	<b>19092900</b>		32	●																

Einsätze / Inserts / Inserts: 1.4: H-BE 16 / 1.5: H-EE 32 / 1.6: H-BS 6 / 1.7: H-BVE 6 / 1.8: H-D 40 / 1.9: H-DD 72 / 1.10: MC 16

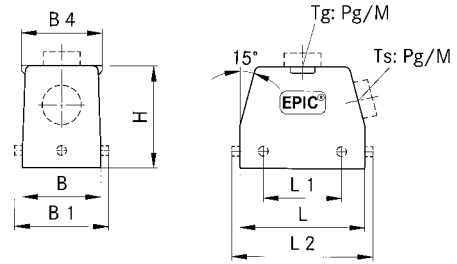
Kabelverschraubung / Cable gland / Presse-étoupe: 5.1: Metr. & PG

# 3.2 EPIC® D A - V I N C I H - B

Gehäuse / Hood / Capot



PG / M



**EPIC® H-B Gehäuse: Tüllengehäuse (Kabeleingang seitlich, Bolzen für Längsbügel)**

*EPIC® H-B housings: hood (side entry, bolts for single locking lever)*

*Boîtiers EPIC® H-B: capot (sortie latérale, ergots pour simple levier)*

## H-B 24

Artikel part article	Art.Nr. part No. N° art.	PG	M	ZW	L	L1	L2	L3	L4	B	B1	B2	B3	B4	B5	H	H1	H2	S	d
H-B 24 TS-RO 21	<b>10113900</b>	21		●	120		137			43				45		61				
H-B 24 TS-RO 29	<b>10123900</b>	29		●																
H-B 24 TS-RO M25	<b>19113900</b>		25	●	120		137			43				45		61				
H-B 24 TS-RO M32	<b>19123900</b>		32	●																

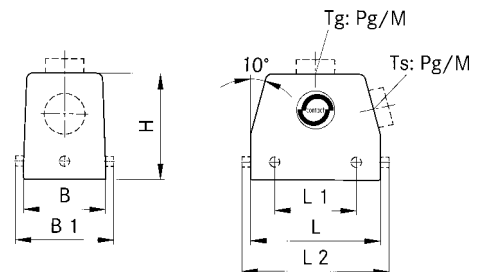
Einsätze / Inserts / Inserts: 1.4: H-BE 24 / 1.5: H-EE 46 / 1.7: H-BVE 10 / 1.8: H-D 64 / 1.9: H-DD 108 / 1.10: MC 24  
 Kabelverschraubung / Cable gland / Presse-étoupe: 5.1: Metr. & PG



PG



M



**EPIC® H-B Gehäuse: Tüllengehäuse (Kabeleingang seitlich, Bolzen für Längsbügel)**

*EPIC® H-B housings: hood (side entry, bolts for single locking lever)*

*Boîtiers EPIC® H-B: capot (sortie latérale, ergots pour simple levier)*

## H-B 48

Artikel part article	Art.Nr. part No. N° art.	PG	M	ZW	L	L1	L2	L3	L4	B	B1	B2	B3	B4	B5	H	H1	H2	S	d
H-B 48 TS 29	<b>10158000</b>	29		●																
H-B 48 TS 36	<b>10159000</b>	36		●	132		152			90						105				
H-B 48 TS 36	<b>10159200</b>	36																		
H-B 48 TS 42	<b>10160000</b>	42		●																
H-B 48 TS M32	<b>19158000</b>		32																	
H-B 48 TS M40	<b>19159000</b>		40		132		152			90						105				
H-B 48 TS M50	<b>19160000</b>		50																	

Einsätze / Inserts / Inserts: 1.4: H-BE 48 / 1.5: H-EE 92 / 1.7: 2 x H-BVE 10 / 1.8: H-D 128 / 1.9: H-DD 216 / 1.10: 2 x MC 24  
 Kabelverschraubung / Cable gland / Presse-étoupe: 5.1: Metr. & PG

# 3.2 EPIC® D A - V I N C I H - B

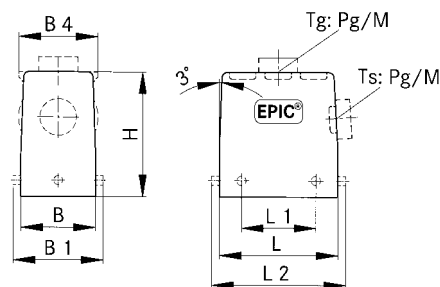
## Gehäuse / Hood / Capot



PG



M



**EPIC® H-B Gehäuse: Tüllengehäuse (Kabeleingang seitlich, Bolzen für Längsbügel, hohe Bauform)**  
**EPIC® H-B housings: hood (side entry, bolts for single locking lever, high version)**  
**Boîtiers EPIC® H-B: capot (sortie latérale, ergots pour simple levier, version haute)**

### H-B 6

Artikel part article	Art.Nr. part No. N° art.	PG	M	ZW	L	L1	L2	L3	L4	B	B1	B2	B3	B4	B5	H	H1	H2	S	d
H-B 6 TSH 21	<b>70022200</b>	21		●	60		74,8			43					45		72			
H-B 6 TSH 29	<b>70022400</b>	29		●																
H-B 6 TSH M25	<b>79022200</b>		25		60		74,8			43					45		72			
H-B 6 TSH M32	<b>79022400</b>		32																	

Einsätze / Inserts / Inserts: 1.4: H-BE 6 / 1.5: H-EE 10 / 1.9: H-DD 24 / 1.10: MC 6

Deckel / Cover / Couvercle: 6.1: H-B 6

Kabelverschraubung / Cable gland / Presse-étoupe: 5.1: Metr. & PG

### H-B 10

Artikel part article	Art.Nr. part No. N° art.	PG	M	ZW	L	L1	L2	L3	L4	B	B1	B2	B3	B4	B5	H	H1	H2	S	d
H-B 10 TSH-RO 21	<b>70054200</b>	21		●	73		90			43					45		72			
H-B 10 TSH-RO 29	<b>70054400</b>	29		●																
H-B 10 TSH-RO M25	<b>79054200</b>		25		73		90			43					45		72			
H-B 10 TSH-RO M32	<b>79054400</b>		32																	

Einsätze / Inserts / Inserts: 1.4: H-BE 10 / 1.5: H-EE 10 / 1.7: H-BVE 3 / 1.9: H-DD 42 / 1.10: MC 10

Kabelverschraubung / Cable gland / Presse-étoupe: 5.1: Metr. & PG

### H-B 16

Artikel part article	Art.Nr. part No. N° art.	PG	M	ZW	L	L1	L2	L3	L4	B	B1	B2	B3	B4	B5	H	H1	H2	S	d
H-B 16 TSH-RO 21	<b>70104200</b>	21		●	93,3		110			43					45		76			
H-B 16 TSH-RO 29	<b>70104400</b>	29		●																
H-B 16 TSH-RO M25	<b>79104200</b>		25																	
H-B 16 TSH-RO M32	<b>79104400</b>		32		93,3		110			43					45		76			
H-B 16 TSH-RO M40	<b>79104800</b>		40																	

Einsätze / Inserts / Inserts: 1.4: H-BE 16 / 1.5: H-EE 32 / 1.6: H-BS 6 / 1.7: H-BVE 6 / 1.8: H-D 40 / 1.9: H-DD 72 / 1.10: MC 16

Kabelverschraubung / Cable gland / Presse-étoupe: 5.1: Metr. & PG

### H-B 24

Artikel part article	Art.Nr. part No. N° art.	PG	M	ZW	L	L1	L2	L3	L4	B	B1	B2	B3	B4	B5	H	H1	H2	S	d
H-B 24 TSH-RO 21	<b>70154400</b>	21		●	120		137			43					45		76			
H-B 24 TSH-RO 29	<b>70154600</b>	29		●																
H-B 24 TSH-RO M25	<b>79154400</b>		25																	
H-B 24 TSH-RO M32	<b>79154600</b>		32		120		137			43					45		76			
H-B 24 TSH-RO M40	<b>79154800</b>		40																	

Einsätze / Inserts / Inserts: 1.4: H-BE 24 / 1.5: H-EE 46 / 1.7: H-BVE 10 / 1.8: H-D 64 / 1.9: H-DD 108 / 1.10: MC 24

Kabelverschraubung / Cable gland / Presse-étoupe: 5.1: Metr. & PG

# 3.2 EPIC® D A - V I N C I H - B

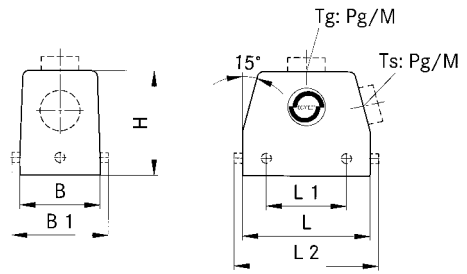
## Gehäuse / Hood / Capot



**PG**



**M**



**EPIC® H-B Gehäuse: Tüllengehäuse (Kabeleingang gerade, Bolzen für Querbügel)**

*EPIC® H-B housings: hood (top entry, bolts for double locking lever)*

*Boîtiers EPIC® H-B: capot (sortie verticale, ergots pour double levier)*

### H-B 10

Artikel part article	Art.Nr. part No. N° art.	PG	M	ZW	L	L1	L2	L3	L4	B	B1	B2	B3	B4	B5	H	H1	H2	S	d
H-B 10 TG 16	<b>10040000</b>	16		●	73	27				43	57,8			45		52				
H-B 10 TG 21	<b>10040100</b>	21		●																
H-B 10 TG M20	<b>19040000</b>		20		73	27				43	57,8			45		52				
H-B 10 TG M25	<b>19040100</b>		25																	

Einsätze / Inserts / Inserts: 1.4: H-BE 10 / 1.5: H-EE 18 / 1.7: H-BVE 3 / 1.9: H-DD 42 / 1.10: MC 10

Deckel / Cover / Couvercle: 6.1: H-B 10

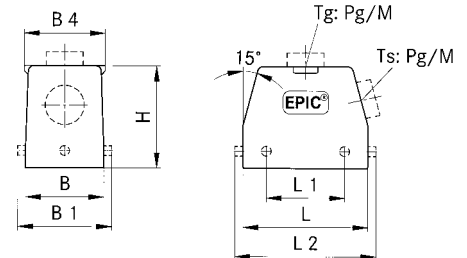
Kabelverschraubung / Cable gland / Presse-étoupe: 5.1: Metr. & PG



**PG**



**M**



### H-B 16

Artikel part article	Art.Nr. part No. N° art.	PG	M	ZW	L	L1	L2	L3	L4	B	B1	B2	B3	B4	B5	H	H1	H2	S	d
H-B 16 TG 21	<b>10080000</b>	21		●	93,3	47,5				43	57,8			45		61				
H-B 16 TG 29	<b>10090000</b>	29		●																
H-B 16 TG M25	<b>19080000</b>		25		93,3	47,5				43	57,8			45		61				
H-B 16 TG M32	<b>19090000</b>		32																	

Einsätze / Inserts / Inserts: 1.4: H-BE 16 / 1.5: H-EE 32 / 1.6: H-BS 6 / 1.7: H-BVE 6 / 1.8: H-D 40 / 1.9: H-DD 72 / 1.10: MC 16

Deckel / Cover / Couvercle: 6.1: H-B 16

Kabelverschraubung / Cable gland / Presse-étoupe: 5.1: Metr. & PG

### H-B 24

Artikel part article	Art.Nr. part No. N° art.	PG	M	ZW	L	L1	L2	L3	L4	B	B1	B2	B3	B4	B5	H	H1	H2	S	d
H-B 24 TG 21	<b>10121000</b>	21		●	120	74				43	57,8			45		61				
H-B 24 TG 29	<b>10111000</b>	29		●																
H-B 24 TG M25	<b>19121000</b>		25		120	74				43	57,8			45		61				
H-B 24 TG M32	<b>19111000</b>		32																	

Einsätze / Inserts / Inserts: 1.4: H-BE 24 / 1.5: H-EE 46 / 1.7: H-BVE 10 / 1.8: H-D 64 / 1.9: H-DD 108 / 1.10: MC 24

Deckel / Cover / Couvercle: 6.1: H-B 24

Kabelverschraubung / Cable gland / Presse-étoupe: 5.1: Metr. & PG

# 3.2 EPIC® D A - V I N C I H - B

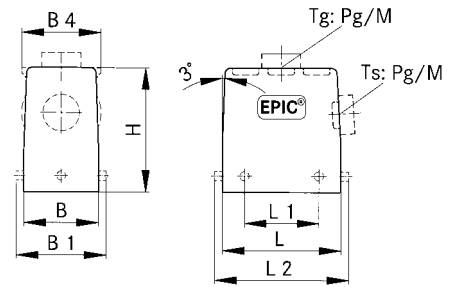
## Gehäuse / Hood / Capot



PG



M



**EPIC® H-B Gehäuse: Tüllengehäuse (Kabeleingang gerade, Bolzen für Querbügel, hohe Bauform)**

**EPIC® H-B housings: hood (top entry, bolts for double locking lever, high version)**

**Boîtiers EPIC® H-B: capot (sortie verticale, ergots pour double levier, version haute)**

### H-B 10

Artikel part article	Art.Nr. part No. N° art.	PG	M	ZW	L	L1	L2	L3	L4	B	B1	B2	B3	B4	B5	H	H1	H2	S	d
H-B 10 TGH 21	<b>70050400</b>	21		●	73	27				43	57,8			45		72				
H-B 10 TGH 29	<b>70050600</b>	29		●																
H-B 10 TGH M25	<b>79050400</b>		25		73	27				43	57,8			45		72				
H-B 10 TGH M32	<b>79050600</b>		32																	

Einsätze / Inserts / Inserts: 1.4: H-BE 10 / 1.5: H-EE 18 / 1.7: H-BVE 3 / 1.9: H-DD 42 / 1.10: MC 10

Deckel / Cover / Couvercle: 6.1: H-B 10

Kabelverschraubung / Cable gland / Presse-étoupe: 5.1: Metr. & PG

### H-B 16

Artikel part article	Art.Nr. part No. N° art.	PG	M	ZW	L	L1	L2	L3	L4	B	B1	B2	B3	B4	B5	H	H1	H2	S	d
H-B 16 TGH 21	<b>70100200</b>	21		●	93,3	47,5				43	57,8			45		76				
H-B 16 TGH 29	<b>70100400</b>	29		●																
H-B 16 TGH M25	<b>79100200</b>		25																	
H-B 16 TGH M32	<b>79100400</b>		32		93,3	47,5				43	57,8			45		76				
H-B 16 TGH M40	<b>79100800</b>		40																	

Einsätze / Inserts / Inserts: 1.4: H-BE 16 / 1.5: H-EE 32 / 1.6: H-BS 6 / 1.7: H-BVE 6 / 1.8: H-D 40 / 1.9: H-DD 72 / 1.10: MC 16

Deckel / Cover / Couvercle: 6.1: H-B 16

Kabelverschraubung / Cable gland / Presse-étoupe: 5.1: Metr. & PG

### H-B 24

Artikel part article	Art.Nr. part No. N° art.	PG	M	ZW	L	L1	L2	L3	L4	B	B1	B2	B3	B4	B5	H	H1	H2	S	d
H-B 24 TGH 21	<b>70150400</b>	21		●	120	74				43	57,8			45		76				
H-B 24 TGH 29	<b>70150600</b>	29		●																
H-B 24 TGH M25	<b>79150400</b>		25																	
H-B 24 TGH M32	<b>79150600</b>		32		120	74				43	57,8			45		76				
H-B 24 TGH M40	<b>79150800</b>		40																	

Einsätze / Inserts / Inserts: 1.4: H-BE 24 / 1.5: H-EE 46 / 1.7: H-BVE 10 / 1.8: H-D 64 / 1.9: H-DD 108 / 1.10: MC 24

Deckel / Cover / Couvercle: 6.1: H-B 24

Kabelverschraubung / Cable gland / Presse-étoupe: 5.1: Metr. & PG

# 3.2 EPIC® D A - V I N C I H - B

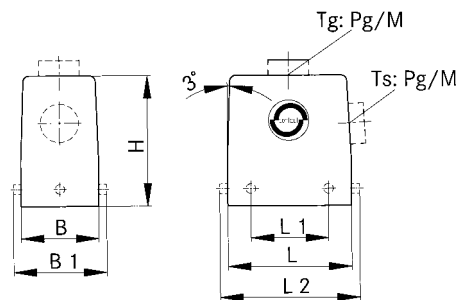
## Gehäuse / Hood / Capot



**PG**



**M**



**EPIC® H-B Gehäuse: Tüllengehäuse (Kabeleingang gerade, Bolzen für Querbügel)**

*EPIC® H-B housings: hood (top entry, bolts for double locking lever)*

*Boîtiers EPIC® H-B: capot (sortie verticale, ergots pour double levier)*

### H-B 32

Artikel part article	Art.Nr. part No. N° art.	PG	M	ZW	L	L1	L2	L3	L4	B	B1	B2	B3	B4	B5	H	H1	H2	S	d
H-B 32 TG 21	<b>10133000</b>	21		●	93,5	64,5				79	89,5					95				
H-B 32 TG 29	<b>10134000</b>	29		●																
H-B 32 TG M32	<b>19134000</b>		32		93,5	64,5				79	89,5					95				
H-B 32 TG M40	<b>19134400</b>		40																	

Einsätze / Inserts / Inserts: 1.4: H-BE 32 / 1.5: H-EE 64 / 1.6: H-BS 12 / 1.8: H-D 80 / 1.9: H-DD 144 / 1.10: 2 x MC 16

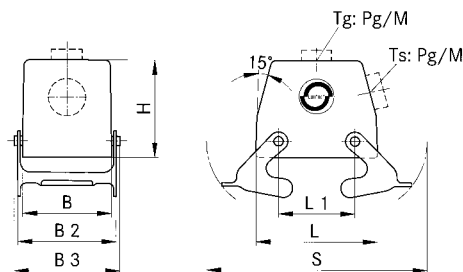
Kabelverschraubung / Cable gland / Presse-étoupe: 5.1: Metr. & PG



**PG**



**M**



**EPIC® H-B Gehäuse: Tüllengehäuse (Kabeleingang gerade, Querbügel)**

*EPIC® H-B housings: hood (top entry, double locking lever)*

*Boîtiers EPIC® H-B: capot (sortie verticale, double levier)*

### H-B 10

Artikel part article	Art.Nr. part No. N° art.	PG	M	ZW	L	L1	L2	L3	L4	B	B1	B2	B3	B4	B5	H	H1	H2	S	d
H-B 10 TGB 16	<b>10041000</b>	16		●	73	27				43	57,8	53				52				116
H-B 10 TGB M20	<b>19041000</b>		20		73	27				43	57,8	53				52				116
H-B 10 TGB M25	<b>79055700</b>		25																	

Einsätze / Inserts / Inserts: 1.4: H-BE 10 / 1.5: H-EE 18 / 1.7: H-BVE 3 / 1.9: H-DD 42 / 1.10: MC 10

Deckel / Cover / Couverture: 6.1: H-B 10

Kabelverschraubung / Cable gland / Presse-étoupe: 5.1: Metr. & PG

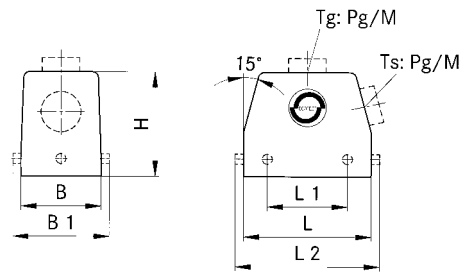


# 3.2 EPIC® D A - V I N C I H - B

## Gehäuse / Hood / Capot



PG / M



**EPIC® H-B Gehäuse: Tüllengehäuse (Kabeleingang seitlich, Bolzen für Querbügel)**

*EPIC® H-B housings: hood (side entry, bolts for double locking lever)*

*Boîtiers EPIC® H-B: capot (sortie latérale, ergots pour double levier)*

### H-B 10

Artikel part article	Art.Nr. part No. N° art.	PG	M	ZW	L	L1	L2	L3	L4	B	B1	B2	B3	B4	B5	H	H1	H2	S	d
H-B 10 TS 16	<b>10042000</b>	16		●	73	27				43	57,8					52				
H-B 10 TS 21	<b>10042100</b>	21		●																
H-B 10 TS M20	<b>19042000</b>		20	●	73	27				43	57,8					52				
H-B 10 TS M25	<b>19042100</b>		25	●																

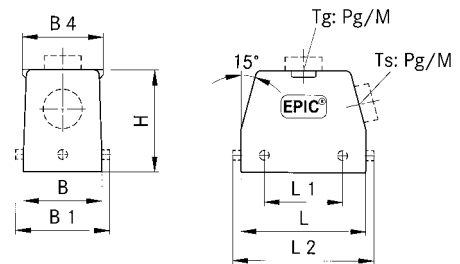
Einsätze / Inserts / Inserts: 1.4: H-BE 10 / 1.5: H-EE 18 / 1.7: H-BVE 3 / 1.9: H-DD 42 / 1.10: MC 10

Deckel / Cover / Couvercle: 6.1: H-B 10

Kabelverschraubung / Cable gland / Presse-étoupe: 5.1: Metr. & PG



PG / M



### H-B 16

Artikel part article	Art.Nr. part No. N° art.	PG	M	ZW	L	L1	L2	L3	L4	B	B1	B2	B3	B4	B5	H	H1	H2	S	d
H-B 16 TS 21	<b>10082000</b>	21		●	93,3	47,5				43	57,8					61				
H-B 16 TS 29	<b>10092000</b>	29		●																
H-B 16 TS M25	<b>19082000</b>		25	●	93,3	47,5				43	57,8					61				
H-B 16 TS M32	<b>19092000</b>		32	●																

Einsätze / Inserts / Inserts: 1.4: H-BE 16 / 1.5: H-EE 32 / 1.6: H-BS 6 / 1.7: H-BVE 6 / 1.8: H-D 40 / 1.9: H-DD 72 / 1.10: MC 16

Deckel / Cover / Couvercle: 6.1: H-B 16

Kabelverschraubung / Cable gland / Presse-étoupe: 5.1: Metr. & PG

### H-B 24

Artikel part article	Art.Nr. part No. N° art.	PG	M	ZW	L	L1	L2	L3	L4	B	B1	B2	B3	B4	B5	H	H1	H2	S	d
H-B 24 TS 21	<b>10113000</b>	21		●	120	74				43	57,8					61				
H-B 24 TS 29	<b>10123000</b>	29		●																
H-B 24 TS M25	<b>19113000</b>		25	●	120	74				43	57,8					61				
H-B 24 TS M32	<b>19123000</b>		32	●																

Einsätze / Inserts / Inserts: 1.4: H-BE 24 / 1.5: H-EE 46 / 1.7: H-BVE 10 / 1.8: H-D 64 / 1.9: H-DD 108 / 1.10: MC 24

Deckel / Cover / Couvercle: 6.1: H-B 24

Kabelverschraubung / Cable gland / Presse-étoupe: 5.1: Metr. & PG

# 3.2 EPIC® D A - V I N C I H - B

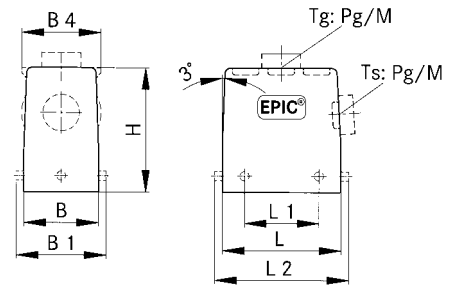
## Gehäuse / Hood / Capot



PG



M



**EPIC® H-B Gehäuse: Tüllengehäuse (Kabeleingang seitlich, Bolzen für Querbügel, hohe Bauform)**

**EPIC® H-B housings: hood (side entry, bolts for double locking lever, high version)**

**Boîtiers EPIC® H-B: capot (sortie latérale, ergots pour double levier, version haute)**

### H-B 10

Artikel part article	Art.Nr. part No. N° art.	PG	M	ZW	L	L1	L2	L3	L4	B	B1	B2	B3	B4	B5	H	H1	H2	S	d
H-B 10 TSH 21	<b>70052400</b>	21		●	73	27				43	57,8					72				
H-B 10 TSH 29	<b>70052600</b>	29		●																
H-B 10 TSH M25	<b>79052400</b>		25		73	27				43	57,8					72				
H-B 10 TSH M32	<b>79052600</b>		32																	

Einsätze / Inserts / Inserts: 1.4: H-BE 10 / 1.5: H-EE 18 / 1.7: H-BVE 3 / 1.9: H-DD 42 / 1.10: MC 10

Deckel / Cover / Couvercle: 6.1: H-B 10

Kabelverschraubung / Cable gland / Presse-étoupe: 5.1: Metr. & PG

### H-B 16

Artikel part article	Art.Nr. part No. N° art.	PG	M	ZW	L	L1	L2	L3	L4	B	B1	B2	B3	B4	B5	H	H1	H2	S	d
H-B 16 TSH 21	<b>70102200</b>	21		●	93,3	47,5				43	57,8					76				
H-B 16 TSH 29	<b>70102400</b>	29		●																
H-B 16 TSH M25	<b>79102200</b>		25																	
H-B 16 TSH M32	<b>79102400</b>		32		93,3	47,5				43	57,8					76				
H-B 16 TSH M40	<b>79102800</b>		40																	

Einsätze / Inserts / Inserts: 1.4: H-BE 16 / 1.5: H-EE 32 / 1.6: H-BS 6 / 1.7: H-BVE 6 / 1.8: H-D 40 / 1.9: H-DD 72 / 1.10: MC 16

Deckel / Cover / Couvercle: 6.1: H-B 16

Kabelverschraubung / Cable gland / Presse-étoupe: 5.1: Metr. & PG

### H-B 24

Artikel part article	Art.Nr. part No. N° art.	PG	M	ZW	L	L1	L2	L3	L4	B	B1	B2	B3	B4	B5	H	H1	H2	S	d
H-B 24 TSH 21	<b>70152400</b>	21		●	120	74				43	57,8					76				
H-B 24 TSH 29	<b>70152600</b>	29		●																
H-B 24 TSH M25	<b>79152400</b>		25																	
H-B 24 TSH M32	<b>79152600</b>		32		120	74				43	57,8					76				
H-B 24 TSH M40	<b>79152800</b>		40																	

Einsätze / Inserts / Inserts: 1.4: H-BE 24 / 1.5: H-EE 46 / 1.7: H-BVE 10 / 1.8: H-D 64 / 1.9: H-DD 108 / 1.10: MC 24

Deckel / Cover / Couvercle: 6.1: H-B 24

Kabelverschraubung / Cable gland / Presse-étoupe: 5.1: Metr. & PG

# 3.2 EPIC® D A - V I N C I H - B

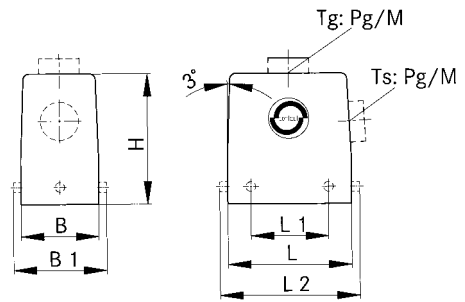
Gehäuse / Hood / Capot



PG



M



**EPIC® H-B Gehäuse: Tüllengehäuse (Kabeleingang seitlich, Bolzen für Querbügel)**

*EPIC® H-B housings: hood (side entry, bolts for double locking lever)*

*Boîtiers EPIC® H-B: capot (sortie latérale, ergots pour double levier)*

## H-B 32

Artikel part article	Art.Nr. part No. N° art.	PG	M	ZW	L	L1	L2	L3	L4	B	B1	B2	B3	B4	B5	H	H1	H2	S	d
H-B 32 TS 21	10135000	21		●																
H-B 32 TS 29	10136000	29		●	93,5	64,5				79	89,5					95				
H-B 32 TS 29	10135600	29																		
H-B 32 TS M25	19135000		25																	
H-B 32 TS M32	19136000		32		93,5	64,5				79	89,5					95				
H-B 32 TS M40	19136200		40																	

Einsätze / Inserts / Inserts: 1.4: H-BE 32 / 1.5: H-EE 64 / 1.6: H-BS 12 / 1.8: H-D 80 / 1.9: H-DD 144 / 1.10: 2 x MC 16

Kabelverschraubung / Cable gland / Presse-étoupe: 5.1: Metr. & PG