

1. MATERIALS AND FINISHES:

BODY	- BRASS, NICKEL PLATING
CONTACT	- BeCu, GOLD PLATING
INSULATORS	- PTFE
HEX NUT	- BRASS, NICKEL PLATING
LOCK WASHER	- BRASS, NICKEL PLATING
O-RING	- SILICONE RUBBER
FERRULE	- BRASS, NICKEL PLATING
HEAT SHRINK TUBING	- CROSSLINKED POLYOLEFIN

2. ELECTRICAL:  
A. IMPEDANCE: 50 OHM  
B. FREQUENCY RANGE: DC - 6 GHz  
C. DIELECTRIC WITHSTANDING VOLTAGE: 1000 VRMS, MIN.

3. MECHANICAL:  
A. DURABILITY: 500 CYCLES MIN.  
B. TEMPERATURE RANGE: -55° C TO +85° C

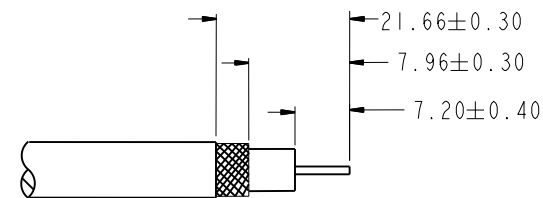
4. PACKAGING:  
A. QUANTITY: SINGLE PACK  
B. MARKING: BAG TO BE MARKED  
"AMPHENOLRF, 82-6450, AND DATE CODE"

5 ▷ RECOMMENDED CABLE ASSEMBLY INSTRUCTIONS:

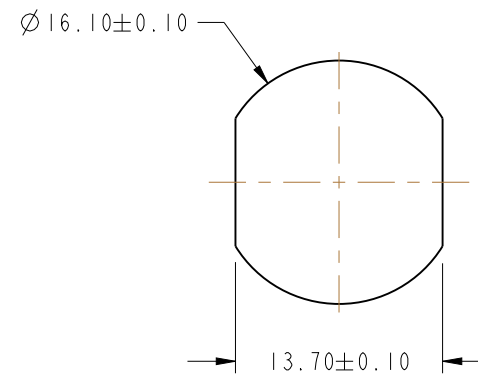
- A. TRIM CABLE AS SHOWN.
- B. SLIDE HEAT SHRINK TUBING, FERRULE AND INSULATOR DISC ONTO CABLE.
- C. SOLDER CABLE CENTER CONDUCTOR TO CONTACT.
- D. INSERT CABLE WITH FOIL ENTERING CONNECTOR AND BRAID OVER KNURL.
- E. CRIMP FERRULE OVER BRAID WITH 0.532" HEX DIE
- F. APPLY HEAT SHRINK TUBING OVER FERRULE.

6. RECOMMENDED TORQUE APPLIED ON HEX NUT : 7-10 IN-LBS

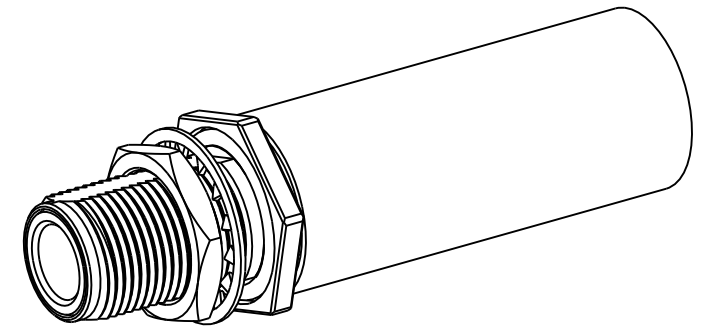
7 SHOWS CABLE ENTRY DIMENSIONS.



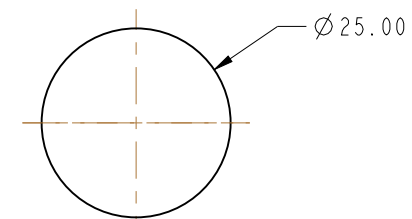
## RECOMMENDED CABLE STRIPPING



### RECOMMENDED MOUNTING HOLE DIMENSIONS

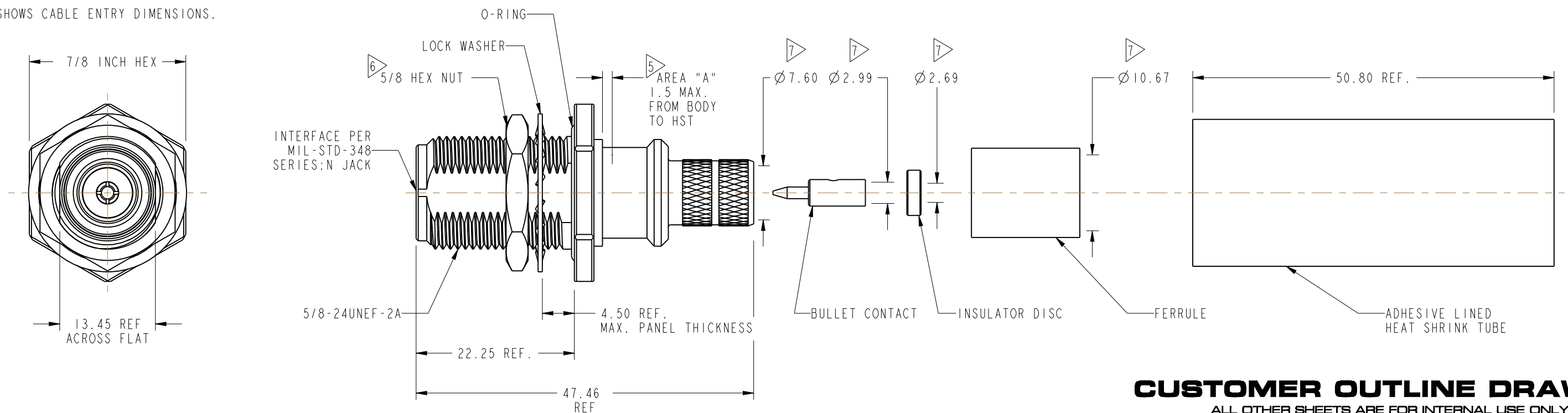


SCALE 1.200



SCALE 1.000

MIN PASS THRU DIAMETER



## CUSTOMER OUTLINE DRAWING

ALL OTHER SHEETS ARE FOR INTERNAL USE ONLY

UNLESS OTHERWISE SPECIFIED, DIMENSIONS ARE IN METRIC AND TOLERANCES ARE: <0.5mm      0.5 - 6mm      6 - 30mm      30 - 120mm      ANGLES ± 0.05mm    ±0.1mm      ±0.2mm      ± 0.3mm      ±1°	MATERIAL  SEE NOTES	DRAWN D.DAVE	DATE 12-Sept-11	TITLE  N, JACK STR BHD FOR LMR-400 CABLE	Amphenol RF Danbury CT USA, Tainan, Taiwan, Shenzhen, China www.amphenolrf.com		
NOTICE - These drawings, specifications, or other data (1) are, and remain the property of Amphenol corp. (2) must be returned upon request; and (3) are confidential and not to be disclosed to any person other than those to whom they are given by Amphenol Corp. the furnishing of these drawings, specifications, or other data by Amphenol Corp., or to any other person to anyone for any purpose is not to be regarded by implication or otherwise in any manner licensing, granting rights to permitting such holder or any other person to manufacture, use or sell any product, process or design, patented or otherwise, that may in any way be related to or disclosed by said drawings, specifications, or other data.		ENGINEER D.DAVE	DATE 12-Sept-11				
		REFERENCE	APPROVED			DATE	
		CONFIGURATION LEVEL: <input type="checkbox"/> <input type="checkbox"/> <input type="checkbox"/>	CAD FILE I:\N\82-6512			DWG SIZE B	REV A
		FINISH					
				DRAWING NO. 82-6512	ITEM NO. 82-6512	PART NO. 82-6512	