

General Purpose - Tube Output



SINGLE ENDED OR PUSH-PULL OUTPUT TRANSFORMERS

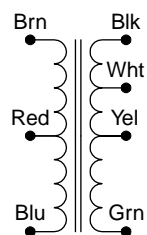
- Designed for general purpose or replacement use in single ended or push-pull tube output circuits.
- Open style with minimum 5" long primary leads, secondary solder lugs for convenient secondary connections (except the 125J). The 125J has wire leads on both primary and secondary.
- Minimum frequency response 150 Hz. - 15 KHz. (+/- 1db max. ref. 1 KHz) at full rated power.

Cat. No.	Audio Watts	Primary Imped.	Secondary Imped.	Max. D.C. Bias (ma)	Wt. Lbs.
125H	8	10K	2/4/8	60	0.6
125J	8	2.5K/4K	6/8 or 3.2/4	80	1.0

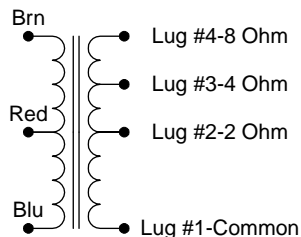
Dimension Table

Cat. No.	A	B	C	D	G Mtg. Hole
125H	2.81	1.50	1.63	2.38	0.187
125J	3.25	1.50	1.94	2.81	0.187

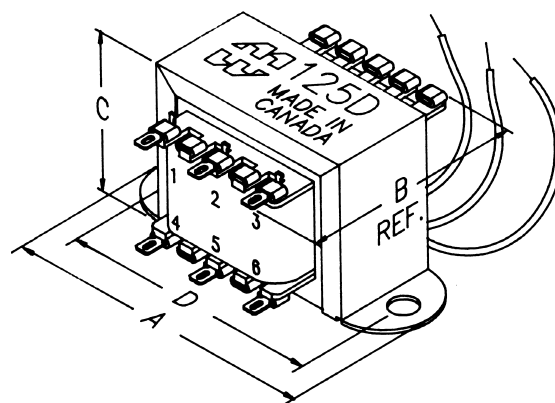
Transformer Schematics



125J



125H



UNIVERSAL SINGLE ENDED OR PUSH-PULL OUTPUT TRANSFORMERS

- Designed for general purpose or replacement use in single ended or push-pull tube output circuits.
- Open style with minimum 5" long primary leads, secondary solder lugs for convenient secondary connections.
- Minimum frequency response 150 Hz. - 15 KHz. (+/- 1db max. ref. 1 KHz) at full rated power.
- Tables provided with each transformer listing 90 pre-calculated impedance ratios.
- Primary impedances from 1,200 to 25,000 Ohms.
- Secondary impedances from 1.5 to 15 Ohms.

Cat. No.	Audio Watts	Max. D.C. Bias (ma)	Wt. Lbs.
125A	3	25	0.19
125B	5	45	0.3
125C	8	60	0.5
125D	10	70	1
125E	15	80	1.5

Dimension Table

Cat. No.	A	B	C	D	G Mtg. Hole
125A	2.06	1.25	1.19	1.75	0.187
125B	2.38	1.38	1.38	2.00	0.187
125C	2.81	1.50	1.69	2.38	0.187
125D	3.25	1.75	2.00	2.81	0.187
125E	3.69	2.00	2.31	3.13	0.187

Transformer Schematic

