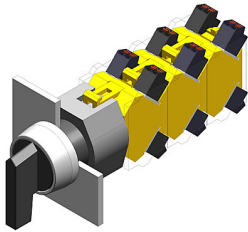


EAO – Your Expert Partner for Human Machine Interfaces

704.101.0 - Selector switch actuator 2 positions, long lever

704.101.0 - Selector switch actuator 2 positions, long lever



Attention: The preview is based on a sample product. This can differ from your current configuration.

Mounting

Mounting cut-out
Design Ø 22.5 mm
raised

Front

Front dimension
Front shape
Front ring material
Front ring colour
Ø 29 mm
round
Aluminium
natural anodized

Other Attributes

Weight 0.037 kg

Operating-/Indication part

Lever material
Lever colour
Switching angle
Plastic
black
C = 90°

IP-Rating

Front protection IP 65

Actuator

Switching action Rest - Maintained

Switching element

Rotary positions 2

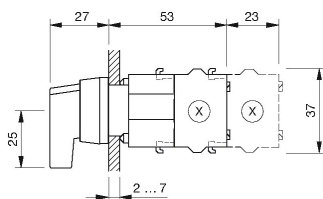
Function

Selector switch

EAO – Your Expert Partner for Human Machine Interfaces

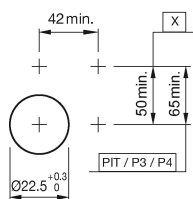
704.101.0 - Selector switch actuator 2 positions, long lever

Dimensions



X = Screw terminal

Mounting cut-outs

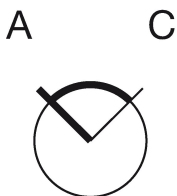


PIT = Push-in terminal

Wiring diagram



Switching positions



Additional information

Max. 3 switching elements can be clipped on
The colour of anodized aluminium parts can vary due to technical production reasons

Legend

Switching action: A = Rest, C = Maintained