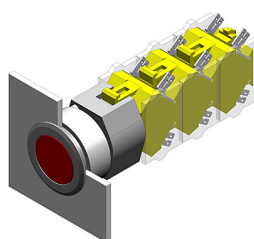


# EAO – Your Expert Partner for Human Machine Interfaces

## 704.042.518 - Pushbutton actuator

### 704.042.518 - Pushbutton actuator



*Attention: The preview is based on a sample product. This can differ from your current configuration.*

#### Mounting

Mounting cut-out	Ø 30.5 mm
Design	flush

#### Front

Front shape	round
Front dimension	Ø 35 mm
Front ring material	Aluminium
Front ring colour	natural anodized

#### Other Attributes

Weight	0.051 kg
--------	----------

#### Operating-/Indication part

Lens optics	transparent
Lens material	Plastic
Lens colour	green
Lens profile	flat

#### IP-Rating

Front protection	IP 65
------------------	-------

#### Actuator

Switching action	Maintained
Housing material	Plastic
Housing colour	grey

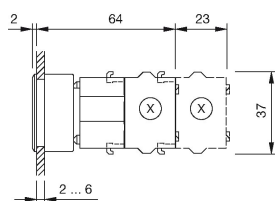
#### Function

Pushbutton
------------

# EAO – Your Expert Partner for Human Machine Interfaces

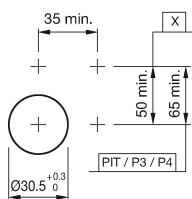
704.042.518 - Pushbutton actuator

## Dimensions



X = Screw terminal

## Mounting cut-outs



PIT = Push-in terminal

## Wiring diagram



## Additional information

Max. 3 switching elements can be clipped on  
The colour of anodized aluminium parts can vary due to technical  
production reasons

## Legend

Switching action: C = Maintained