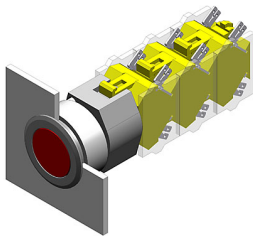


EAO – Your Expert Partner for Human Machine Interfaces

704.042.218 - Pushbutton actuator

704.042.218 - Pushbutton actuator



Attention: The preview is based on a sample product. This can differ from your current configuration.

Mounting

Mounting cut-out Ø 30.5 mm
Design flush

Front

Front shape round
Front dimension Ø 35 mm
Front ring material Aluminium
Front ring colour natural anodized

Other Attributes

Weight 0.051 kg

Operating-/Indication part

Lens optics transparent
Lens material Plastic
Lens colour red
Lens profile flat

IP-Rating

Front protection IP 65

Actuator

Switching action Maintained
Housing material Plastic
Housing colour grey

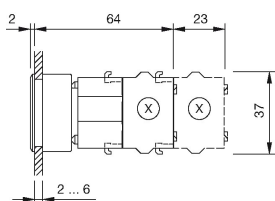
Function

Pushbutton

EAO – Your Expert Partner for Human Machine Interfaces

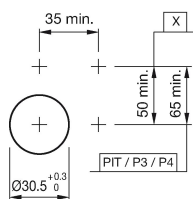
704.042.218 - Pushbutton actuator

Dimensions



X = Screw terminal

Mounting cut-outs



PIT = Push-in terminal

Wiring diagram



Additional information

Max. 3 switching elements can be clipped on
The colour of anodized aluminium parts can vary due to technical
production reasons

Legend

Switching action: C = Maintained