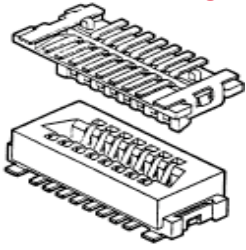


91911-31325LF - Conan® : I - Industrial Series; Mezzanine Plug, SMT; 1mm Pitch; 5mm Mated Height, 25p



www.fci.com

Mating Half

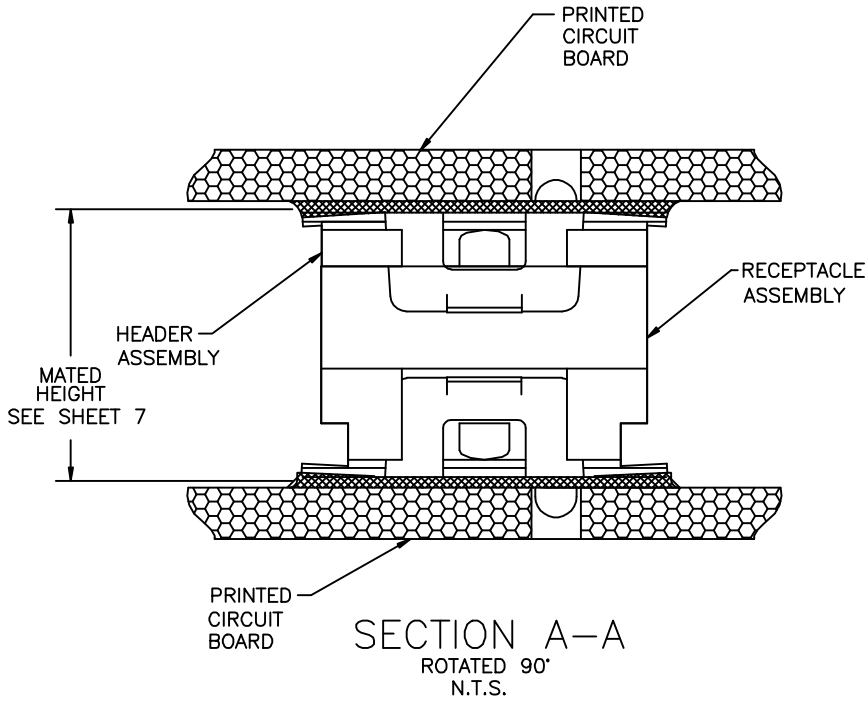
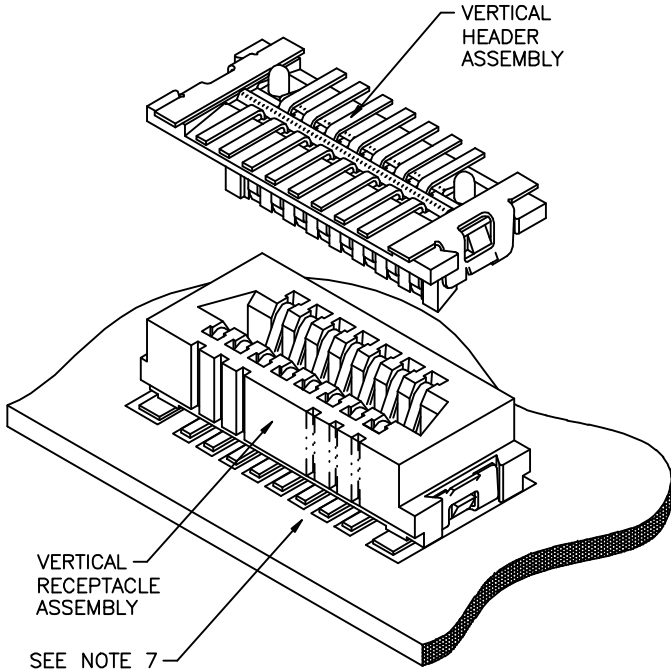
- ▶ 91920-21125
- ▶ 91921-31125
- ▶ 91930-21125
- ▶ 91931-31125

Specifications

General	
Application	Industrial
Gender	Plug
Number of contacts (Total)	25
Packaging	Tape and Reel
Mating half	Mates with all Conan® 25 Position Receptacles
Operating Environment	Industrial, Harsh Environment
Dimensional	
Height (Mated)	5 mm
Stack Height	5 mm (0.197 in.)
Height (Conductor)	1.73 mm (0.068 in.)
Electrical	
Current rating	1 amp/Contact
Resistance (Contact)	30 m ohms
Resistance (Insulation)	1000 M ohms
Voltage rating	500 volts
Mechanical	
Durability (Mating cycles)	30 Mating cycles
Insertion force	125 grams per Contact max.
Withdrawal Force	25 grams per Contact min.
Retention force	44N min.
Wipe (Contact)	0.64 mm (0.025 in.)
Mounting	
Polarization pegs (Board)	Yes
Retention feature (Board)	Surface Mount Solder Tab
Solder process	Infrared and Vapor - Phase Reflow
Physical	
Color (Housing)	Natural

Material (Contact)	Copper Alloy
Material (Housing)	LCP
Plating (Contact area)	0.38 µm (15 µin.) GXT™
Plating (Tail)	2.54 µm (100 µin.) Pure Tin
Underplating (Contact)	1.27 µm (50 µin.) Nickel
Plating and Performance (Classification)	IMFG per Battelle, Class 2a, 20 days mated
Resistance to Solder Heat	240°C for 30 sec
Temperature (Operating - continuous)	+85°C max.
Temperature (Range)	-55°C to +130°C
Environmental	
Environment	Demanding
Approvals / Certifications	
UL File Number	E66906
CSA File Number	LR46923
Approvals / Certifications	UL and CSA Approved
Other Features	
Popular Configuration (Customer Prototyping)	Not Applicable
Popular Configuration (Customer Production)	Yes
Most Popular Configuration	Yes
Packaging (Type)	Tape and Reel with pickup caps
Vacuum Pick-up Cap	Yes
Literature	ELXCONANIND1211EA4

PRODUCT NUMBER
SEE TABLE

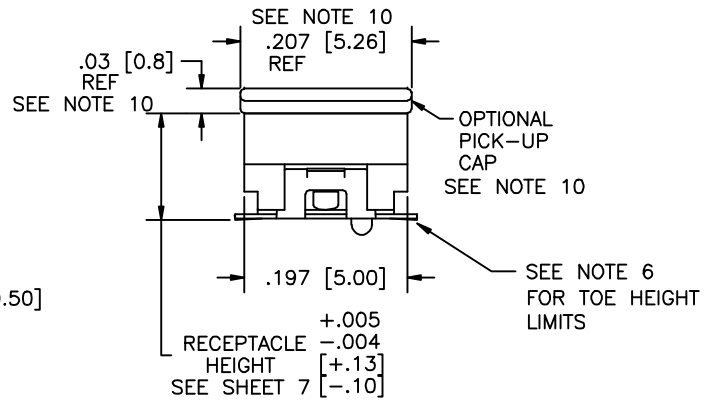
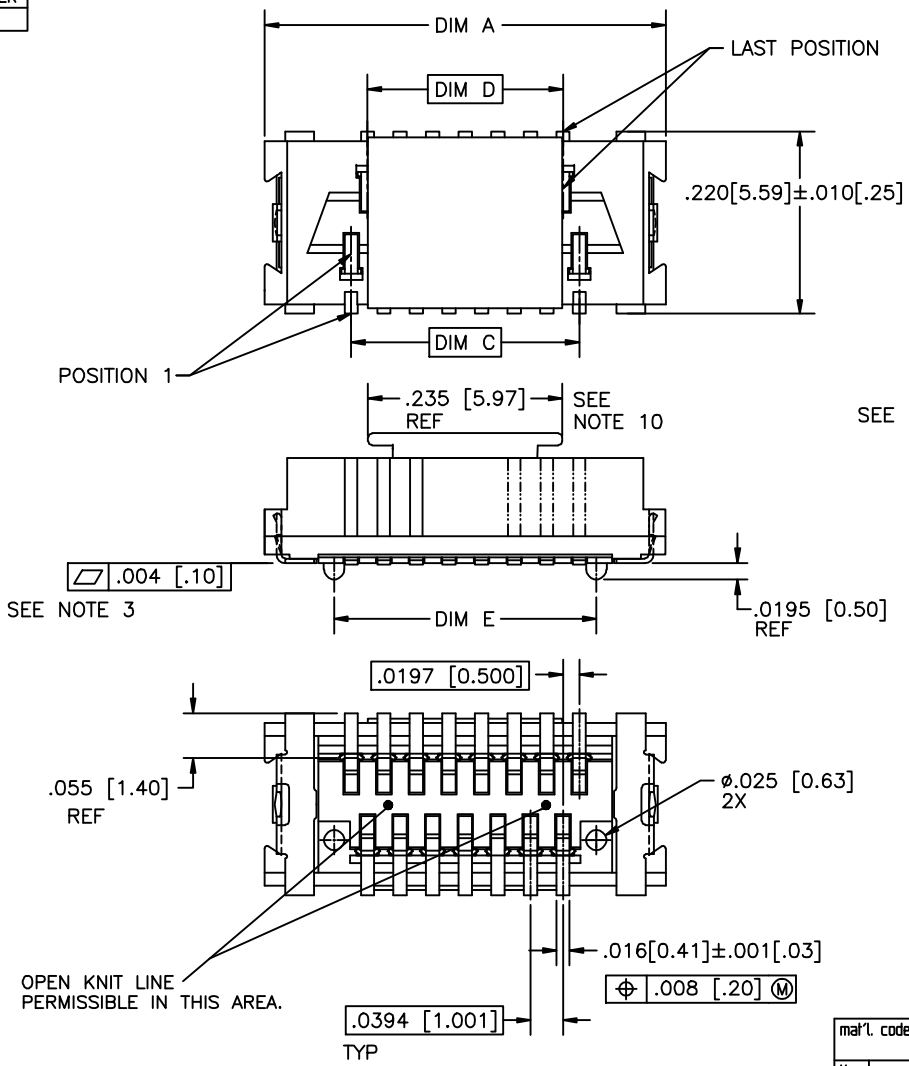


FCIconnect.com

Copyright FCI

mat'l. code				surface	tolerance	projection	product family	
				ISO 1902	ISO 406 ISO 1101	 INCH/MM	CONAN	
tolerances unless otherwise specified Y V03-1347 AA 12/20/01 AA M04-0190 MHT 9/24/04 AB M05-0110 MHT 5/26/05 0'±2' AC M06-0232 AGS 06/12/08 dr AD M06-0373 MHT 9/26/06 eng AE M08-0012 AGS 1/11/08 chr AF M08-0287 MHT 10/02/08 appd				linear	XXXL01/XXXL03 XXXL006/XXXL013 XXXXL0020/XXXL0051		title CONAN™ CONNECTOR ASSEMBLY	
sheet index revision AF AF AF AF AF AF AF AF sheet 1 2 3 4 5 6 7				scale 5:1		dwg no 91900 sheet 1 of 7 size A3		
						type Product Customer Drawing		

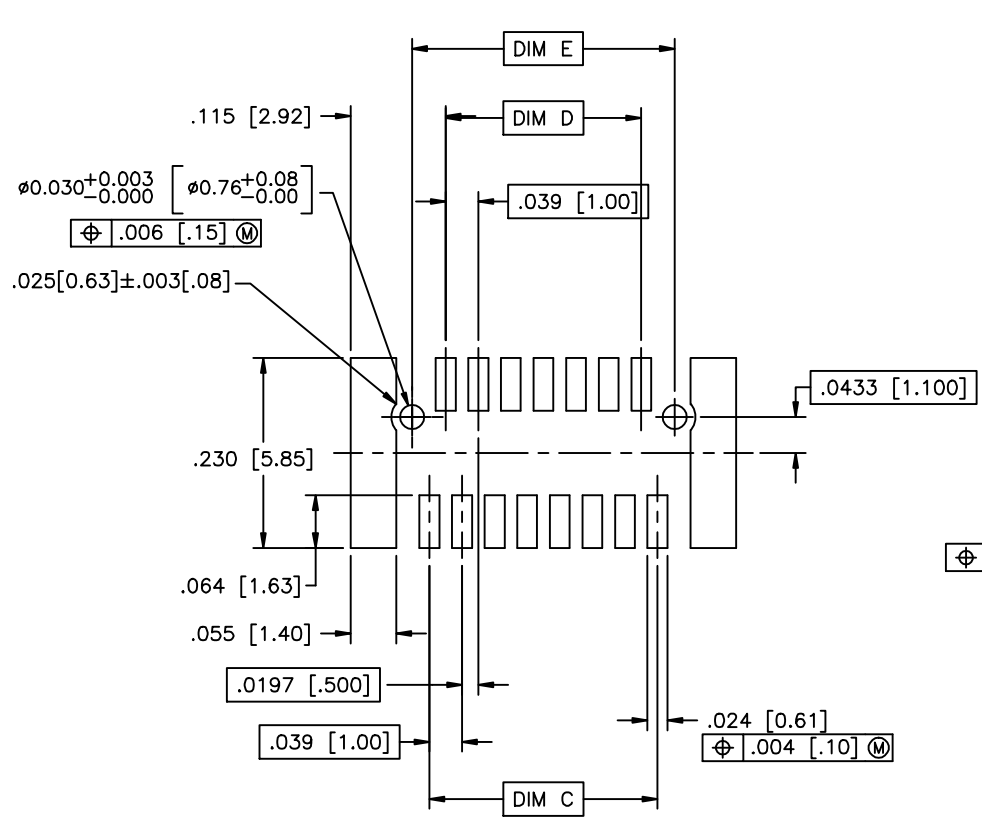
PRODUCT NUMBER
SEE TABLE



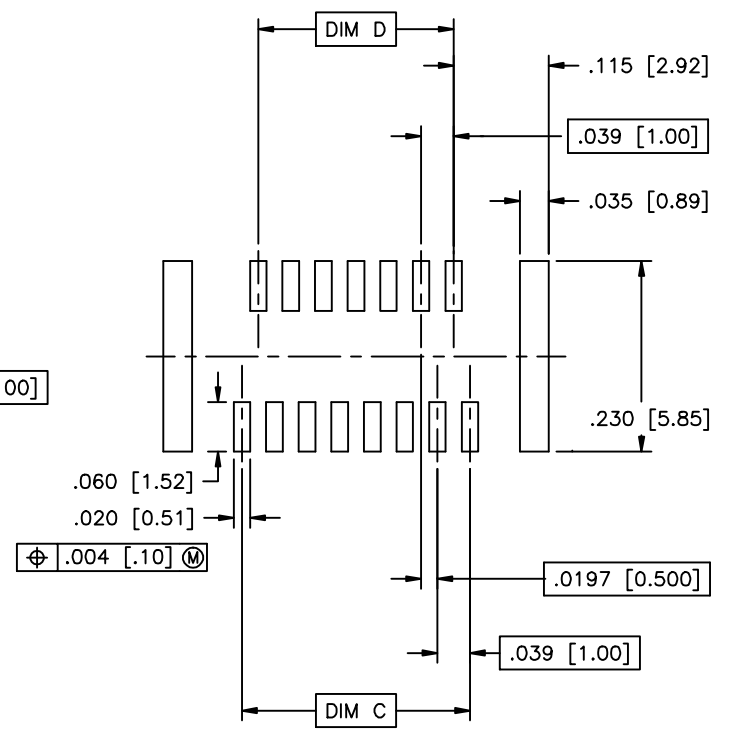
Copyright FCJ

mat'l. code		surface	ISO 1902	tolerance	ISO 406	projection	ISO 1101	product family	CONAN	
ltr	ecn no	dr	date	tolerances unless otherwise specified		INCH/MM	scale 5:1	title	CONAN™ CONNECTOR ASSEMBLY	
AF				angles	linear				XXX±.01/XX±0.3	
								dwg no	sheet 2 of 7	size
				dr	R.SEIPLE	11/13/91		91900		A3
				engr	D.HORCHLER	01/10/92				
				chr	D.HORCHLER	01/10/92				
				appd	D.HORCHLER	01/10/92				
sheet	revision							type Product Customer Drawing		
index	sheet									

PRODUCT NUMBER
SEE TABLE



RECOMMENDED
PAD LAYOUT



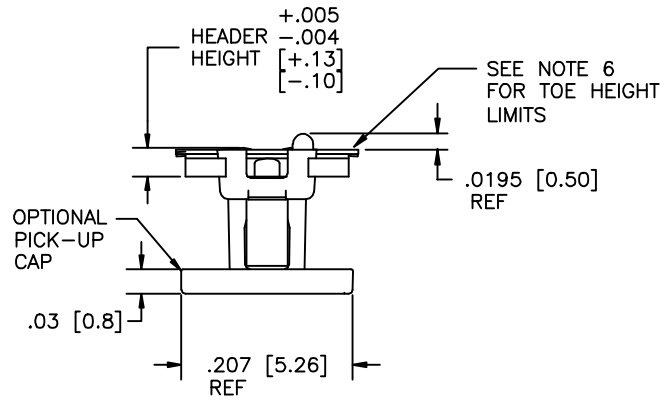
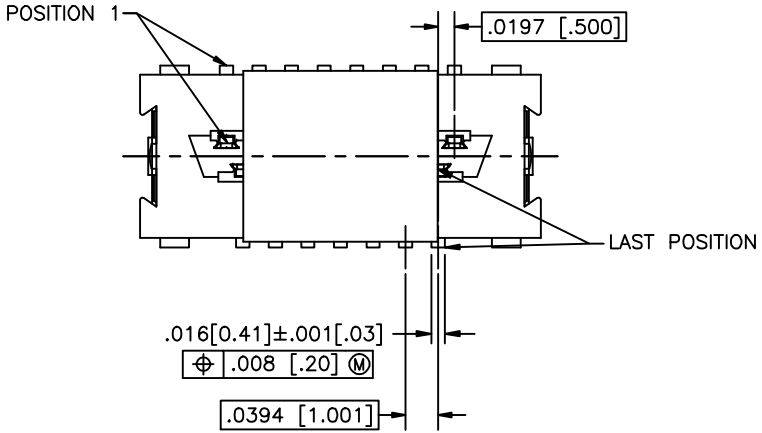
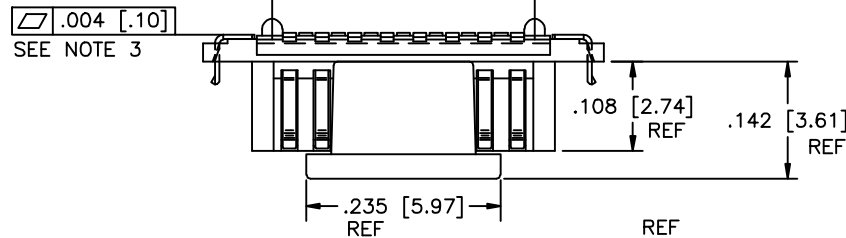
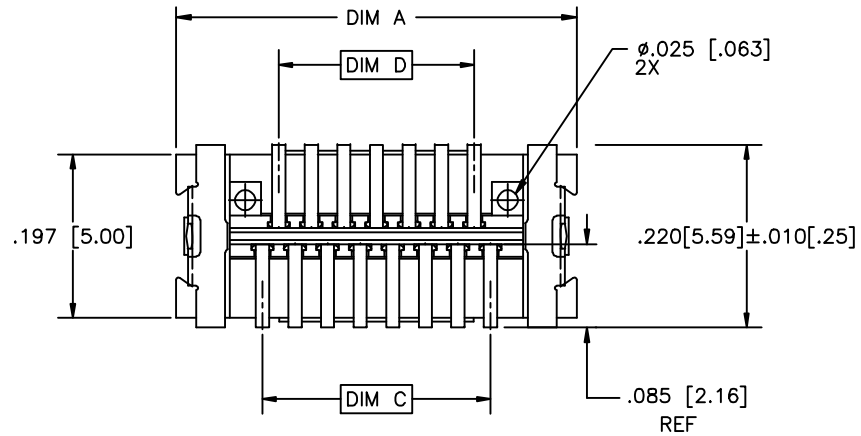
RECOMMENDED
STENCIL LAYOUT
FOR RECEPTACLE



Copyright FCJ

mat'l. code		surface ISO 902		tolerance ISO 406 ISO 7001		projection INCH/MM		product family CONAN	
ltr	ecn no	dr	date	tolerances unless otherwise specified				title CONAN™ CONNECTOR ASSEMBLY	
AF				angles	linear	XXX±.01/XXX±.03	INCH/MM		sheet 3 of 7 size
				0'±2'		XXX±.006/XXX±0.13	scale 5:1		A3
						XXX±.0020/XXX±0.051	FCJ		91900
dr		R.SEIPLE	11/13/91	appd	D.HORCHLER	01/10/92	type		Product Customer Drawing
engr		D.HORCHLER	01/10/92						
chr		D.HORCHLER	01/10/92						
appd		D.HORCHLER	01/10/92						
sheet index	revision sheet								

PRODUCT NUMBER
SEE TABLE



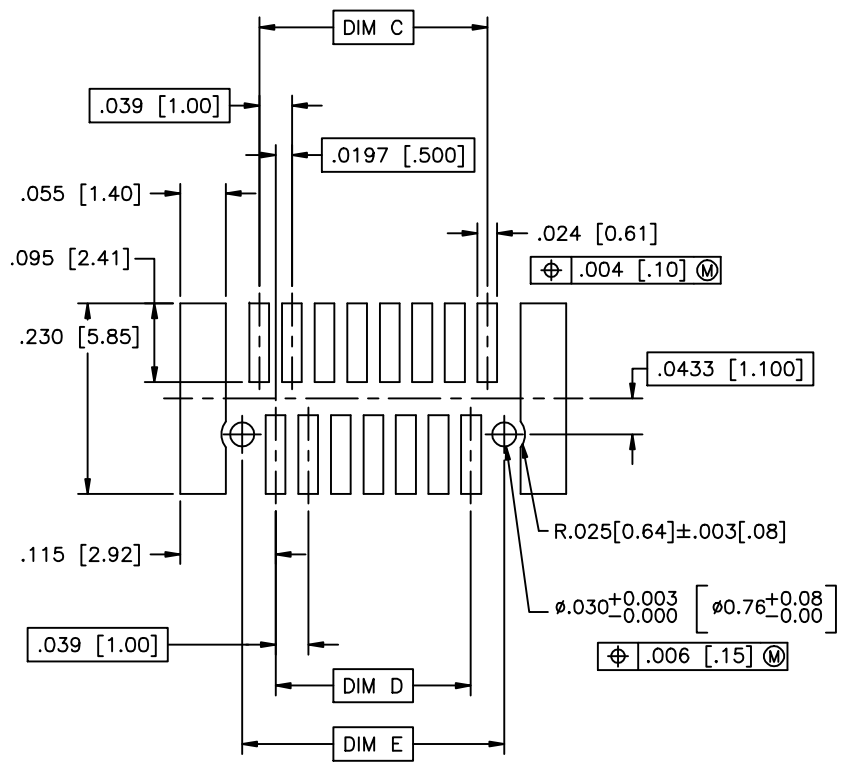
mat'l. code		surface ISO 1902		tolerance ISO 406 ISO 7001		projection INCH/MM		product family CONAN		
ltr	ecp no	dr	date	tolerances unless otherwise specified		scale 5:1		title CONAN™ CONNECTOR ASSEMBLY		
AF				angles	linear			dwg no 91900		
				0° ± 2'				sheet 4 of 7 size A3		
				dr	R. SEIPLE	11/13/91			type Product Customer Drawing	
				engr	D. HORCHLER	01/10/92				
				chr	D. HORCHLER	01/10/92				
				appd	D. HORCHLER	01/10/92				
sheet index	revision sheet									



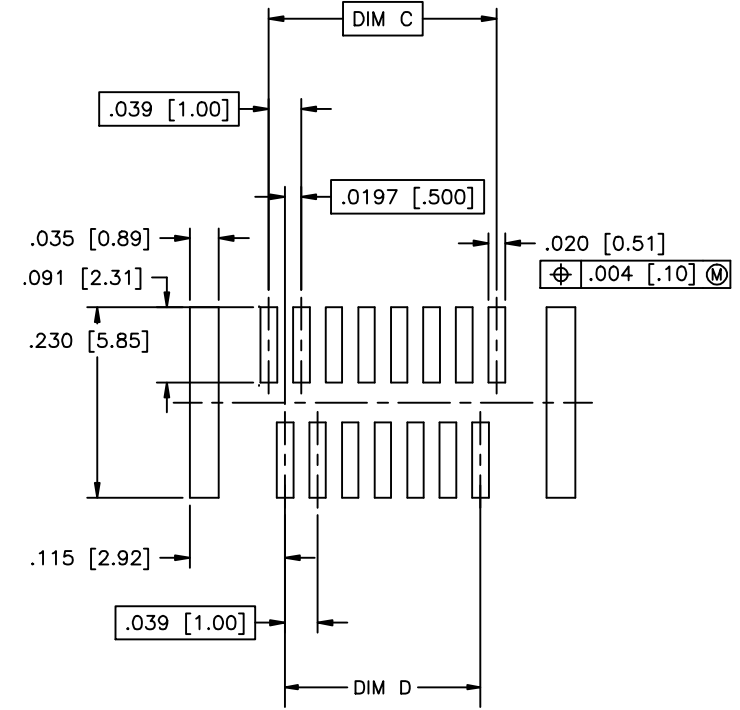
Copyright FCJ

form A3

PRODUCT NUMBER
SEE TABLE



RECOMMENDED
PAD LAYOUT



RECOMMENDED
STENCIL LAYOUT
FOR HEADER



Copyright FCJ

mat'l. code		surface ISO 1902		tolerance ISO 406 ISO 7001		projection FIRST ANGLE		product family CONAN		
ltr	ecp no	dr	date	tolerances unless otherwise specified						
AF				angles	linear	XXX±.01/XXX±.03	INCH/MM	title CONAN™ CONNECTOR ASSEMBLY		
				0'±2'		XXX±.006/XXX±.013		dwg no 91900		
						XXX±.0020/XXX±.0051	scale 5:1	sheet 5 of 7 size A3		
				dr	R.SEIPLE	11/13/91			type Product Customer Drawing	
				engr	D.HORCHLER	01/10/92				
				chr	D.HORCHLER	01/10/92				
				appd	D.HORCHLER	01/10/92				
sheet index	revision sheet									

PRODUCT NUMBER	POS	DIM "A"	DIM "C"	DIM "D"	DIM "E"
919TC-WXY09	9	.366 [9.30]	.157 [4.00]	.118 [3.00]	.1990 [5.055]
-WXY09LF					
-WXY11	11	.406 [10.30]	.197 [5.00]	.157 [4.00]	.2380 [6.045]
-WXY11LF					
-WXY15	15	.484 [12.30]	.276 [7.00]	.236 [6.00]	.3170 [8.052]
-WXY15LF					
-WXY21	21	.602 [15.30]	.394 [10.00]	.354 [9.00]	.4350 [11.049]
-WXY21LF					
-WXY25	25	.681 [17.30]	.472 [12.00]	.433 [11.00]	.5140 [13.056]
-WXY25LF					
-WXY31	31	.800 [20.30]	.591 [15.00]	.551 [14.00]	.6320 [16.053]
-WXY31LF					
-WXY41	41	.996 [25.30]	.787 [20.00]	.748 [19.00]	.8290 [21.057]
-WXY41LF					
-WXY51	51	1.193 [30.30]	.984 [25.00]	.945 [24.00]	1.0260 [26.060]
-WXY51LF					
-WXY69	69	1.547 [39.30]	1.339 [34.00]	1.299 [33.00]	1.3800 [35.052]
-WXY69LF					

NOTES:

1. MATERIALS:

RECEPTACLE HOUSING - LCP, UL-94V-0. COLOR: NATURAL.

RECEPTACLE TERMINALS - COPPER ALLOY, PLATED WITH 15u"/.38u GXT™ IN CONTACT AREA AND 100u"/2.54u Sn ON SOLDER LEGS WITH AN OVERALL 50u"/1.27u Ni UNDERPLATE.

HEADER HOUSING - LCP, UL-94V-0. COLOR: NATURAL.

HEADER TERMINALS - COPPER ALLOY, PLATED WITH 15u"/.38u GXT™ IN CONTACT AREA AND 100u"/2.54u Sn ON SOLDER LEGS WITH AN OVERALL 50u"/1.27u Ni UNDERPLATE.

RETENTION DEVICE - BRASS, PLATED WITH 100u"/2.54u Sn OVER NICKEL.

2. REFERENCE GS-12-006 FOR PRODUCT PERFORMANCE DATA.

③ SEE TA-774 FOR FURTHER DESCRIPTION OF HOW THIS DIMENSION IS APPLIED.

④ PICK AND PLACE CAP OR TAPE IS ONLY AVAILABLE WITH OPTION 3 PACKAGING. (PSA ADHESIVE SEALED). ALSO, PSA PACKAGING REQUIRES A PICK AND PLACE CAP.

5. RECOMMENDED SOLDER PASTE THICKNESS IS .006 TO .008 INCHES THICK.

⑥ THE TOE HEIGHT OF THE SOLDER TAIL SHALL BE MEASURED FROM THE LOWEST POINT OF THE .004 CO-PLANARITY GRAVITY PLANE. THIS MEASUREMENT IS NOT TO EXCEED A WINDOW OF .000 TO .007 INCHES.

⑦ THREE SLOTS MAY BE LOCATED AT EITHER END OF HOUSING.

⑧ 5.50mm MATED HEIGHT IS ONLY AVAILABLE IN 9, 15 AND 31 POS.

⑨ 7.50mm MATED HEIGHT IS ONLY AVAILABLE IN 9 POS.

⑩ APPLIES TO 91921-3XYZZ AND 91931- 3XYZZ OPTIONS ONLY.

11. THE HOUSING WILL WITHSTAND EXPOSURE TO 260°C PEAK TEMPERATURE FOR 30 SECONDS IN A CONVECTION INFRA RED OR VAPOR PHASE REFLOW OVEN. SEE APPLICATION/PROCEDURES IF THEY ARE AVAILABLE

⑫ PRODUCT WITH "LF" AT THE END MEETS EUROPEAN UNION DIRECTIVES AND OTHER COUNTRY REGULATION AS DESCRIBED IN GS-22-008.



FCIconnect.com

Copyright FCI

mat'l. code		surface		tolerance		projection		product family	
		ISO 1902		ISO 406				CONAN	
ltr		ecn no		dr		date		title	
AF								CONAN™ CONNECTOR ASSEMBLY	
		angles		linear				INCH/MM	
		0°±2'		XXX±.01/XXX.03		XXX±.006/XXX±0.13		scale 5:1	
dr		R.SEIPLE		11/13/91				dwg no	
engr		D.HORCHLER		01/10/92				sheet 6 of 7	
chr		D.HORCHLER		01/10/92				size	
appd		D.HORCHLER		01/10/92				A3	
sheet		revision						type	
index		sheet						Product Customer Drawing	

PRODUCT NUMBER
SEE TABLE

CONAN ASSEMBLY PART NUMBER

919 T C - W X Y ZZ LF

LEAD FREE OPTION
SEE NOTE 12

TYPE	T
HEADER WITH NO PEGS	0
HEADER WITH PEGS	1
RECEPTACLE WITH NO PEGS	2
RECEPTACLE WITH PEGS	3

PICK AND PLACE CAP OR TAPE (NOTE 4)	C
WITHOUT CAP OR TAPE	0
WITH CAP	1
WITH TAPE (RECEPTACLE ONLY)	2

PACKAGING	W
TUBE	2
PRESSURE SEALED TAPE & REEL	3

NOTE 4

Y	HEADER HEIGHT	RECEPTACLE HEIGHT	MATED HEIGHT +0.10 -0.008 [+25] [-.20]
1	.034 [.86]	.129 [3.28]	.163 [4.15]
2	.048 [1.23]	SEE Y=1 FOR ALL RECEPTACLES	.177 [4.50]
3	.068 [1.73]		.197 [5.00]
4	.107 [2.72]		.236 [6.00]
5	.1465 [3.721]		.276 [7.00]
* 6	.088 [2.23]		.216 [5.50]
** 7	.1665 [4.229]		.296 [7.52]

* NOTE 8
** NOTE 9

X	PLATING
1	15u"/.38u GXT™
2	30u"/.76u GXT™

ZZ	NUMBER OF POSITIONS
09	9
11	11
15	15
21	21
25	25
31	31
41	41
51	51
69	69

EXAMPLE: 91921-31125LF
IS A CONAN RECEPTACLE ASSEMBLY,
HAVING NO PEGS AND WITH A PICK AND PLACE CAP.
IT ALSO HAS GXT™ PLATING, IS .13 [3.2] HIGH AND 25
POSITIONS AND IS PACKAGED IN PRESSURE SEALED TAPE,
REEL AND LEAD FREE.

mat'l. code		surface ISO 902	tolerance ISO 406 ISO 1101	projection 	product family CONAN
ltr	ecn no	dr	date	title CONAN™ CONNECTOR ASSEMBLY	
AF				INCH/MM 	scale 5:1
angles		linear	XXX.X/XXX.3 XXX.X/XXX.13 XXX.X/XXX.05	dwg no 91900	
0'±2'		dr	R.SEIPLE 11/13/91	sheet 7 of 7 size A3	
		engr	D.HORCHLER 01/10/92	type Product Customer Drawing	
		chr	D.HORCHLER 01/10/92		
		appd	D.HORCHLER 01/10/92		
sheet	revision				
index	sheet				

form A3