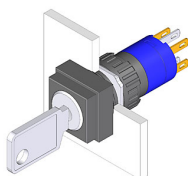


EAO – Your Expert Partner for Human Machine Interfaces

51-255.022D - Keylock switch 2 positions

51-255.022D - Keylock switch 2 positions



Attention: The preview is based on a sample product. This can differ from your current configuration.

Mounting

Mounting cut-out Design	Ø 16 mm raised
-------------------------	-------------------

Front

Front dimension	18 x 18 mm
Front shape	square
Front material	Plastic
Front colour	black

Other Attributes

Weight	0.016 kg
--------	----------

Operating-/Indication part

Switching angle	C = 90°
-----------------	---------

IP-Rating

Front protection	IP 65
------------------	-------

Connection Method

Terminal	Solder 2.8 x 0.5 mm
----------	---------------------

Actuator

Key remove	A
Switching action	Rest - Maintained

Switching element

Rotary positions	2
Switching system	Snap-action switching element
Switching current	5 A
Contacts	1 NC + 1 NO
Contact material	Gold
Switching voltage	250 V AC

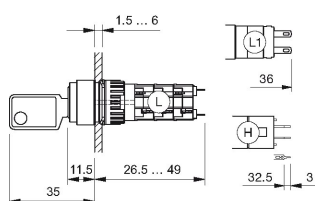
Function

Keylock switch

EAO – Your Expert Partner for Human Machine Interfaces

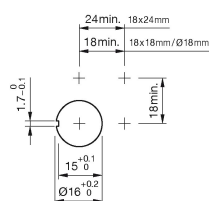
51-255.022D - Keylock switch 2 positions

Dimensions

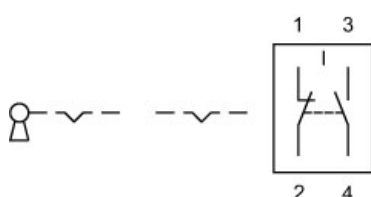


H = Universal terminal 2.0 x 0.5 mm

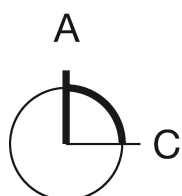
Mounting cut-outs



Wiring diagram



Switching positions



Additional information

Standard lock: DOM 311

Two keys are supplied with each key lock switch

Optional lock numbers on request

Legend

Contacts: NC = Normally closed, NO = Normally open

Switching action: A = Rest, C = Maintained