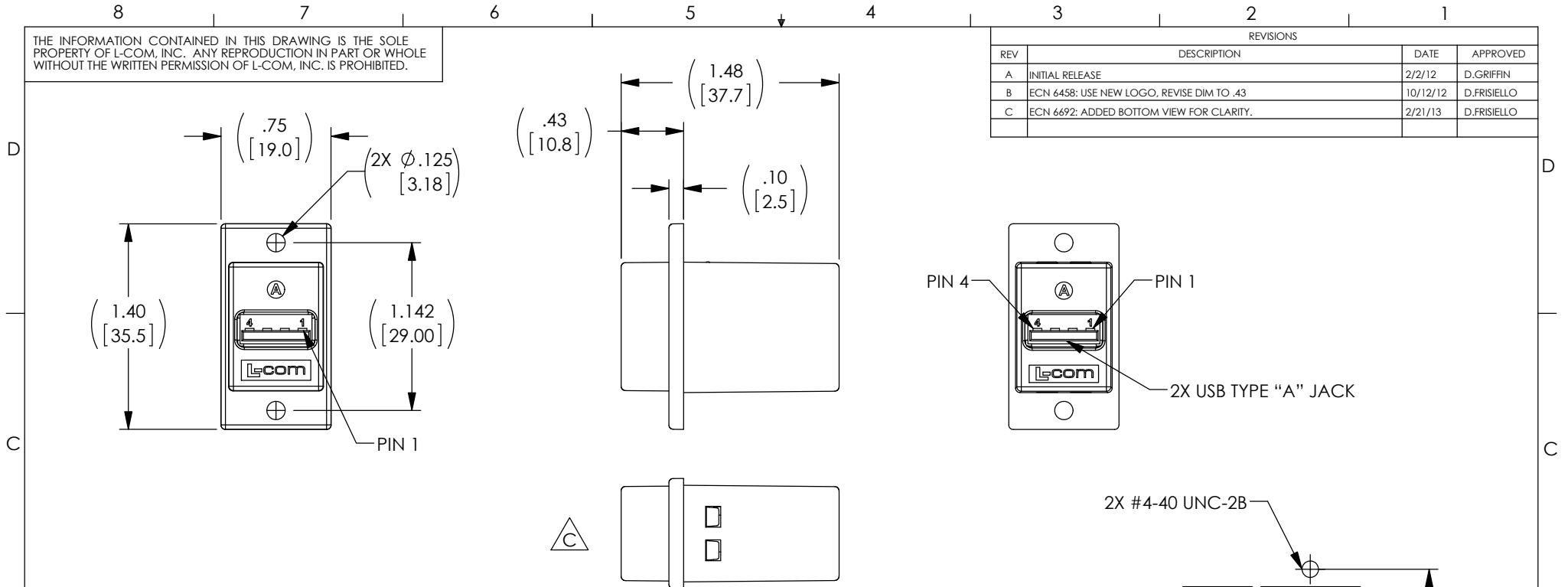


THE INFORMATION CONTAINED IN THIS DRAWING IS THE SOLE PROPERTY OF L-COM, INC. ANY REPRODUCTION IN PART OR WHOLE WITHOUT THE WRITTEN PERMISSION OF L-COM, INC. IS PROHIBITED.

REVISIONS			
REV	DESCRIPTION	DATE	APPROVED
A	INITIAL RELEASE	2/2/12	D.GRIFFIN
B	ECN 6458: USE NEW LOGO, REVISE DIM TO .43	10/12/12	D.FRISIELLO
C	ECN 6692: ADDED BOTTOM VIEW FOR CLARITY.	2/21/13	D.FRISIELLO



**NOTES:**

**MATERIAL:**

COUPLER HOUSING: ABS, UL94V-0.  
 CONNECTOR PLASTIC: PBT WITH GLASS FIBER  
 CONNECTOR CONTACTS: BRASS  
 CONNECTOR SHELL: BRASS  
 PCB: EPOXY GLASS FP-4, 94V-0 FLAMMABILITY RATING

**FINISH:**

COUPLER HOUSING: BLACK  
 CONNECTOR CONTACTS: GOLD, 30μ INCHES  
 CONNECTOR SHELL: NICKEL

**ELECTRICAL:**

CURRENT RATING: 2 AMP MAX.  
 VOLTAGE RATING: 140 VDC.

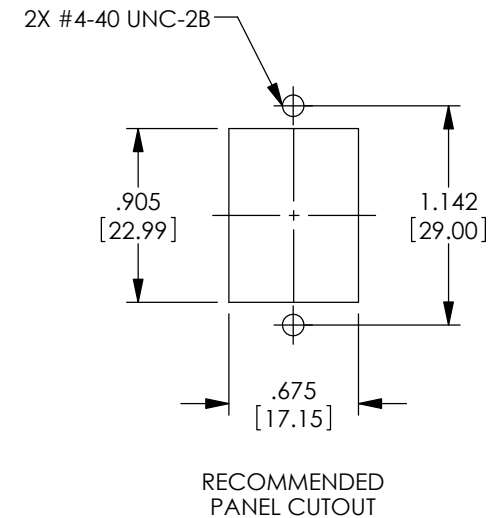
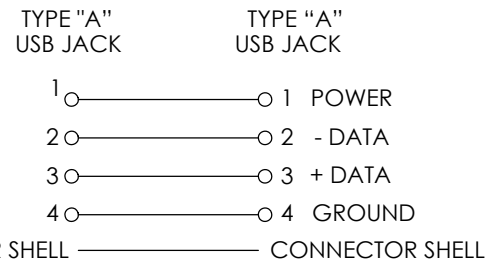
**ENVIRONMENTAL:**

OPERATING TEMPERATURE: -20°C TO +80°C

**MISCELLANEOUS:**

COUPLER SHALL BE TESTED FOR CONTINUITY.  
 COUPLER SHALL BE INDIVIDUALLY PACKAGED IN ACCORDANCE WITH L-COM SPECIFICATION PS-0031.

**WIRING MAP**



RoHS Compliant ✓

UNLESS OTHERWISE SPECIFIED, DIMENSIONS ARE IN INCHES [mm] OVERALL CABLE LENGTH TOLERANCE: <math>\leq 12 [305] = +1 [25] / -0</math> <math>> 12 [305] \leq 60 [1524] = +2 [51] / -0</math> <math>> 60 [1524] \leq 120 [3048] = +4 [102] / -0</math> <math>> 120 [3048] \leq 300 [7620] = +6 [152] / -0</math> <math>> 300 [7620] = +3\% / -0\%</math>	APPROVALS	DATE		45 BEECHWOOD DRIVE NORTH ANDOVER, MA 01845
	DRAWN BY D.FRISIELLO	1/11/12		CATEGORY USB
ALL OTHER DIMENSIONAL TOLERANCES: .X = ± .2 .XX = ± .02 .XXX = ± .005	CHECKED BY F.MAO	1/11/12	PRODUCT DESCRIPTION CPLR PNL MNT USB A/A BLK	
PROJECTION 	APPROVED BY S.SMITH	1/11/12	CONFIGURATION DETAILS OF UNDIMENSIONED FEATURES MAY VARY	SCALE: NONE
COLOR VARIATIONS MAY OCCUR	SIZE A	FSCM NO. 43321	DWG. NO. ECF504B-UAA	REV. C
			CAD FILE: ECF504B-UAA.SLDDRW	SHEET 1 OF 1