

20M, 21M, 22M SERIES *LIGHTWEIGHT SHUNTS 50 MILLIVOLTS*

NON-STANDARD CURRENT AND MILLIVOLT RATED LIGHTWEIGHT SHUNTS AVAILABLE UPON REQUEST

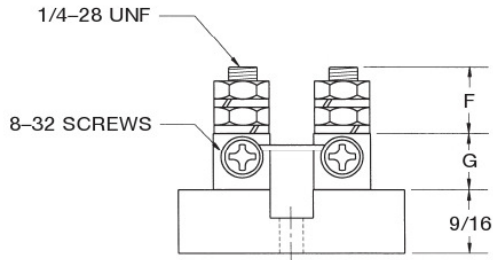
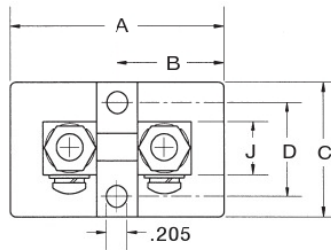
CATALOG NO.	AMP	A	B	C	D	E	F	G	J
20M10A50	10	2	1	1 1/4	.875	-	5/8	1/2	1/2
20M15A50	15	2	1	1 1/4	.875	-	5/8	1/2	1/2
20M20A50	20	2	1	1 1/4	.875	-	5/8	1/2	1/2
20M30A50	30	2	1	1 1/4	.875	-	5/8	1/2	1/2
20M50A50	50	2	1	1 1/4	.875	-	5/8	1/2	1/2
20M60A50	60	2	1	1 1/4	.875	-	5/8	1/2	1/2
20M75A50	75	2	1	1 1/4	.875	-	5/8	1/2	1/2
20M100A50	100	2	1	1 1/4	.875	-	5/8	1/2	1/2
20M150A50	150	2	1	1 1/4	.875	-	5/8	1/2	1/2
21M200A50	200	3 1/4	1 5/8	1 3/4	1.25	3/8-16	-	3/4	1
21M250A50	250	3 1/4	1 5/8	1 3/4	1.25	3/8-16	-	3/4	1
21M300A50	300	3 1/4	1 5/8	1 3/4	1.25	3/8-16	-	3/4	1
21M400A50	400	3 1/4	1 5/8	1 3/4	1.25	3/8-16	-	3/4	1
21M500A50	500	3 1/4	1 5/8	1 3/4	1.25	3/8-16	-	3/4	1
21M600A50	600	3 1/4	1 5/8	1 3/4	1.25	3/8-16	-	3/4	1
22M800A50	800	4 1/2	2 1/4	2 1/2	2	1/2-13	-	1	1 1/2
22M1000A50	1000	4 1/2	2 1/4	2 1/2	2	1/2-13	-	1	1 1/2
22M1200A50	1200	4 1/2	2 1/4	2 1/2	2	1/2-13	-	1	1 1/2
22M1500A50	1500	4 1/2	2 1/4	2 1/2	2	1/2-13	-	1	1 1/2

DIMENSIONS IN INCHES
DIMENSIONS SUBJECT TO CHANGE WITHOUT NOTICE

RATED ACCURACY ± .6%

All 20M, 21M and 22M Series Shunts are also available with 100 DCmV Outputs

20M LIGHTWEIGHT SERIES



21M & 22M LIGHTWEIGHT SERIES

