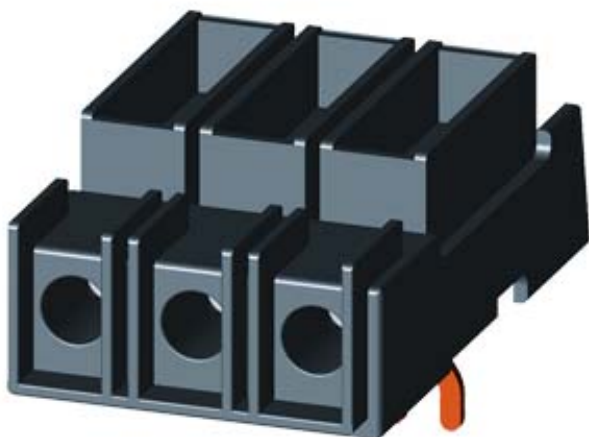


TERMINAL BLOCK TYPE E ACC. TO UL508 CIRCUIT-BREAKER SZ S00/S0



General technical data:

product brand name		SIRIUS
product designation		type E terminal
Size of the circuit-breaker		S00, S0
Protection class IP / on the front		IP20
Insulation voltage / with degree of pollution 3		
• rated value	V	690
Ambient temperature		
• during storage	°C	-50 ... +80
• during operating	°C	-20 ... +60
Current-carrying capacity / maximum	A	40


Installation/mounting/dimensions:

Width	mm	44.8
Height	mm	38.9
Depth	mm	73.6
Acceptability for application / makes the assembly of self-protected combination motor controllers (type E) according to UL 508 possible		Yes
•		a construction with 3RV1915 bus bars is not possible

Connections:

Design of the electrical connection		
<ul style="list-style-type: none"> for main current circuit 		screw-type terminals
Type of the connectable conductor cross-section		
<ul style="list-style-type: none"> for main contacts <ul style="list-style-type: none"> solid stranded finely stranded <ul style="list-style-type: none"> with conductor end processing for AWG conductors / for main contacts 		2x (1 ... 10 mm ²) 2x (2.5 ... 16 mm ²), 1x (1.5 ... 25) 1x (1 ... 16 mm ²), 2x (1 ... 10 mm ²) 1x (14 ... 3), 1x (16 ... 3), (14 ... 6), (16 ... 3)

Certificates/approvals:

Verification of suitability		CE / UL / CSA / CCC	
General Product Approval	Declaration of Conformity	Test Certificates	
 CSA	 UL	 EG-Konf.	Special Test Certificate
			Type Test Certificates/Test Report

Shipping Approval



Shipping Approval

other



[other](#)

Further information:

Information- and Downloadcenter (Catalogs, Brochures,...)

<http://www.siemens.com/industrial-controls/catalogs>

Industry Mall (Online ordering system)

<http://www.siemens.com/industrial-controls/mall>

Cax online generator:

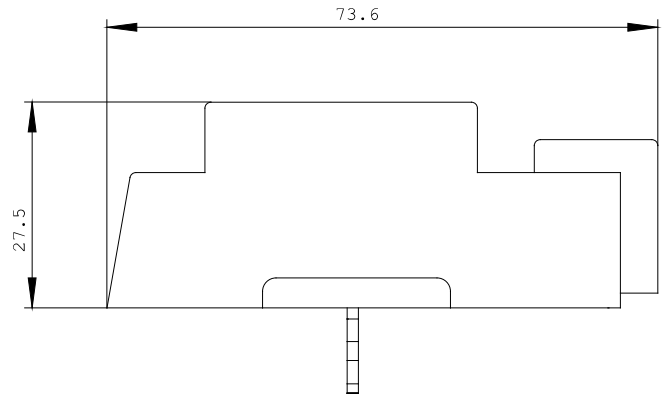
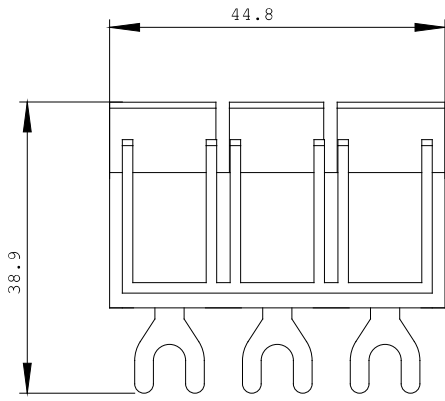
<http://www.siemens.com/cax>

Service&Support (Manuals, Certificates, Characteristics, FAQs,...)

<http://support.automation.siemens.com/WWW/view/en/3RV2928-1H/all>

Image database (product images, 2D dimension drawings, 3D models, device circuit diagrams, ...)

http://www.automation.siemens.com/bilddb/cax_en.aspx?mlfb=3RV2928-1H



last change:

Sep 10, 2012