

The Anderson's A32 Euro Battery Connector (EBC) uses the DIN43589-1 form factor which has been specially configured for North American fast battery charging systems.

Unlike other DIN43589-1 connectors, our A320 offers contact and crimp tooling selections developed for American Wire Gauge cable.

The connector design incorporates an advanced, cost effective contact carrier for ease of assembly and fewer components. All materials are selected to insure years of reliable service under adverse battery environments.

FEATURES

- AWG Contacts and Tooling**
You get the right contact and tooling recommendations for your AWG cable without tedious trial and error
- Up to Four Auxiliary Contacts**
Can be used for battery monitoring and charger communications. Like our main contacts they are available in AWG selections
- Low Mating Forces**
Connectors can be mated and unmated without the necessity of added hardware
- Hexagonal Voltage Key for 24V, 36V, 48V, 72V, 80V, or 96V.**
Key prevents mating of different operating voltages



PRODUCT SPECIFICATIONS

| Electrical | | Mechanical | |
|---------------------------|--------------------|------------------------|----------------------------|
| UL Current Rating | 320 Amps | Mating Cycles, No Load | 5000 |
| UL Voltage Rating | 150 Volts | Mating/Unmating Force | 12 lbs. average |
| Wire Range | 1/0 to 4/0 | Contact Retention | 100 lbs. minimum |
| Dielectric Strength | 2000 Volts minimum | | |
| Contact Resistance | 30 microhoms | Materials | |
| Ambient Temperature Range | -25degC to 90 degC | Housing | PA6 (Nylon) Glass Filled |
| | | Contacts | Copper alloy, silver plate |
| | | Hardware | Steel, zinc chromate plate |

ORDERING INFORMATION

Connector Part Number Selection

| Series | Gender | Main Contact | - | Handle | Coding Key | Auxiliaries | Packaging |
|-------------------------------|--------|--------------|---|--------|------------------|-------------------------------|--------------|
| A32 | 4 | 2 | - | 1 | 0 | C | 9 |
| 4 Plug | | | | | | | 8 Bulk |
| 00 None, purchased separately | | | | | | | 9 Individual |
| 01 1/0 | | | | | | 0 None | |
| 02 2/0 | | | | | | A Upper 14/18 awg (2) | |
| 03 3/0 | | | | | | B Lower 14/18 awg (2) | |
| 04 4/0 | | | | | | C Upper (2) & Lower (2) 14/18 | |
| 0 No | | | | | 0 Grey, Standard | | |
| 1 Black | | | | | | | |

Component Part Number

| Part Number | Description |
|-------------|---------------------------------------|
| 320-1050 | 1/0 Main Pin |
| 320-1070 | 2/0 Main Pin |
| 320-1003 | 3/0 Main Pin |
| 320-1004 | 4/0 Main Pin |
| 320-24 | Upper Auxiliary Pin Contact 14/18 awg |
| 320-22 | Lower Auxiliary Pin Contact 14/18 awg |
| 320-8 | Handle |
| 160-9 | Standard Grey Voltage Key |
| 160-17 | Green Dry/Gel Battery Voltage Key |
| 160-19 | Yellow Universal Voltage key |

HEADQUARTERS: 13 Pratts Junction Road, P.O. Box 579, Sterling, MA 01564 T:978-422-3600 F:978-422-3700

EUROPE: Rathealy Road, Fermoy Co. Cork, Ireland T:353-(0)25-32277 F:353-(0)25-32296

ASIA/PACIFIC: IDEAL Anderson Asia Pacific Ltd., Unit 922-928 Topsail Plaza, 11 On Sum Street, Shatin N.T., Hong Kong T:852-2636-0836 F:852-2635-9036

CHINA: IDEAL Anderson Technologies (Shenzhen) Ltd., Block A8 Tantou W. Ind. Par, Songgang Baoan District, Shenzhen, P.R. China 51810 T: 86-755-2768-2118 F: 86-755-2768-2218

TAIWAN: IDEAL Anderson Asia Pacific Ltd., Taiwan Branch, 4F-2, No.116, Dadun 20th St., Situn District, Taichung City 407, Taiwan (R.O.C.) T: 886-4-2310-6451 F:886-4-2310-6460

www.andersonpower.com

ORDERING INFORMATION

Accessories

| Part Number | Description |
|-------------|------------------------|
| 993G4 | Manual release bracket |

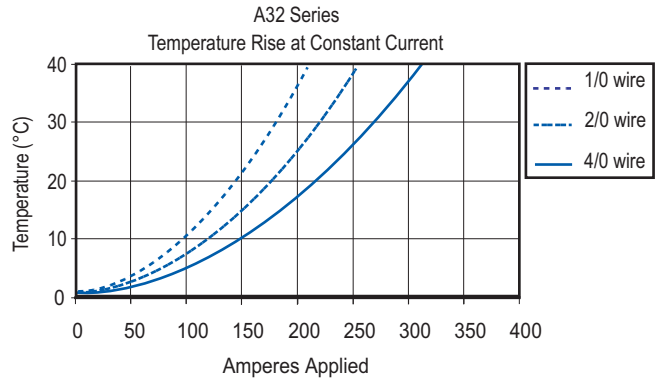
Crimp Tooling- Power Contacts

| Part Number | Description | Wire | |
|-------------|----------------------|-----------|-------|
| | | Size | Class |
| 1387G2 | Pneumatic bench tool | | |
| 1303G11 | Die for 1387G2 | 2/0 | K-M |
| 1304G13 | Locator for 1387G2 | 2/0 | K-M |
| 1303G3 | Die for 1387G2 | 3/0 - 4/0 | K-M |
| 1304G11 | Locator for 1387G2 | 3/0 - 4/0 | K-M |
| 1387G3 | Hydraulic hand tool | | |
| 1322G3 | Die for 1387G3 | 2/0 | K |
| 1322G2 | Die for 1387G3 | 2/0 | M |
| 1322G1 | Die for 1387G3 | 3/0 - 4/0 | K-M |

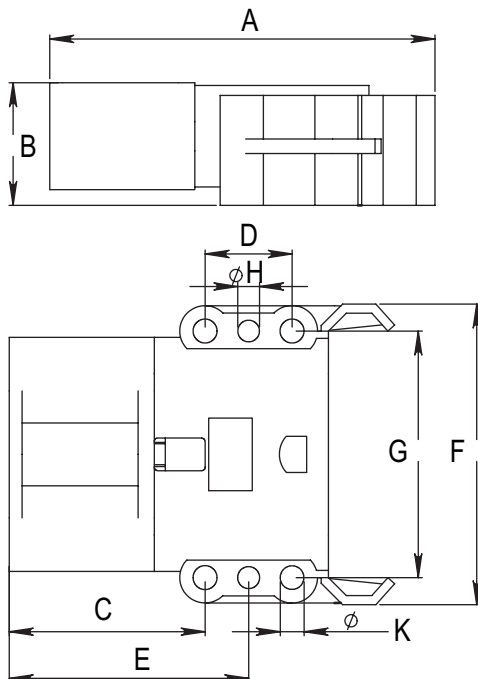
Auxiliary Contacts

| Part Number | Description |
|-------------|-------------------------|
| 1309G4 | Hand tool #14 - #18 AWG |

TEMPERATURE RISE CHART



DIMENSIONS



A32 Pin Housing

| | -A- | -B- | -C- | -D- | -E- |
|--------|-------|-------|-------|-------|-------|
| mm | 122.5 | 43.0 | 54.0 | 24.0 | 66.0 |
| inches | 4.822 | 1.693 | 2.125 | 0.944 | 2.598 |
| | -F- | -G- | -H- | -K- | |
| mm | 89.0 | 69.0 | 6.0 | 6.6 | |
| inches | 3.503 | 2.716 | 0.236 | 0.259 | |