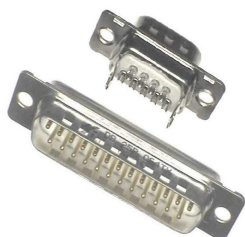


**DB25S064TLF - D-  
Subminiature : Cable  
Connector 25 Way Socket  
Solder Bucket, without  
Accessory**

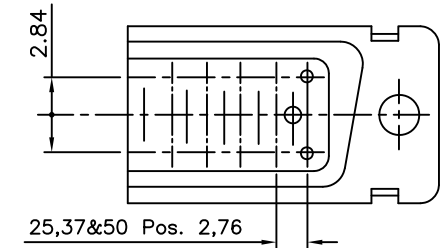
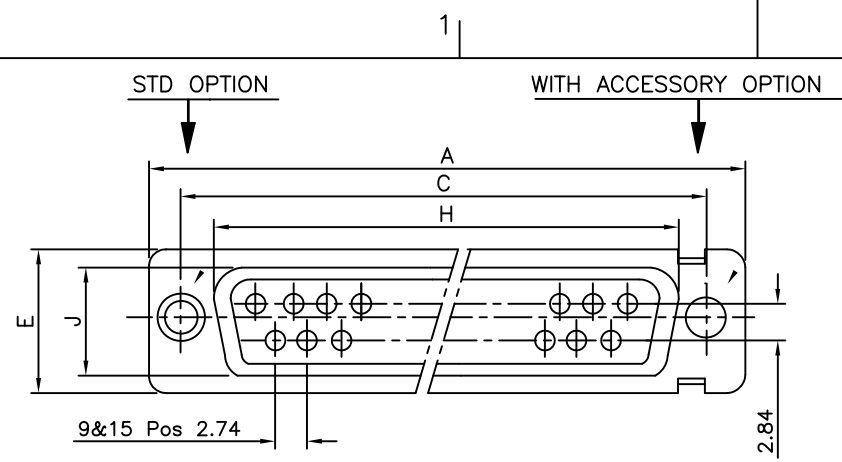


[www.fci.com](http://www.fci.com)

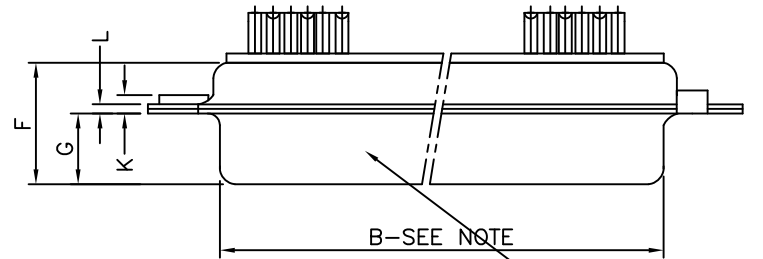
## Specifications

|  |                                |
|--|--------------------------------|
| <b>General</b>                                 |                                |
| Contact type                                   | Signal                         |
| Gender   | Socket                         |
| Number of contacts (Total)                     | 25                             |
| Orientation                                    | Straight                       |
| Product Type                                   | Connector                      |
| Termination Style                              | Solder Bucket                  |
| <b>Dimensional</b>                             |                                |
| Size (Shell)                                   | B                              |
| Size (Wire)                                    | 20 AWG max. on Signal          |
| <b>Electrical</b>                              |                                |
| Current rating                                 | 5A per Signal Contact          |
| Resistance (Contact)                           | < 10 milli ohms                |
| Voltage rating                                 | 300V rms at 50 Hz              |
| Voltage rating (DWV - Dielectric withstanding) | 1000V rms                      |
| <b>Mechanical</b>                              |                                |
| Durability (Mating cycles)                     | Std Class (>200 Mating Cycles) |
| Durability (Plating - Mating cycles)           | Std Class (>200 Mating Cycles) |
| Extraction force (Mating part)                 | 0.3N min. per Contact          |
| Extraction force (Signal)                      | 0.3N min. per Contact          |
| Insertion force (Mating part)                  | 5N max. per Contact            |
| Insertion force (Signal)                       | 5N max. per Contact            |
| <b>Mounting</b>                                |                                |
| Attachment                                     | Cable                          |
| Mounting accessory                             | Without Accessory              |
| Mounting options                               | Without Accessory              |
| <b>Physical</b>                                |                                |
| Plating (Contact)                              | Gold over Nickel               |
| Plating (Shell)                                | Mattee Tin                     |
| Plating (Solder tail)                          | Sn                             |
| Plating (Termination)                          | Matte Tin over Nickel          |

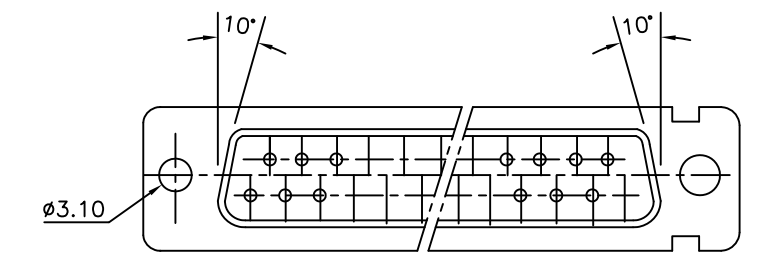
|  |                            |
|--|----------------------------|
| <b>Temperature (Operating - range)</b> | -55°C to +125°C            |
| <b>Approvals / Certifications</b>      |                            |
| <b>Approvals / Certifications</b>      | Recognized (File E 118235) |
| <b>Other Features</b>                  |                            |
| <b>Most Popular Configuration</b>      | Yes                        |



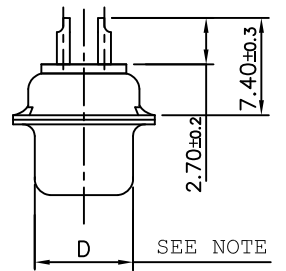
LAY OUT OF 50P CONNECTOR



Part No.& Date code printing



VIEW OF MATING FACE



TECHNICAL SPECIFICATIONS

|                             |   |   |
|-----------------------------|---|---|
| SHELLS                      | : | MATT TIN / ZINC PLATED STEEL  |
| INSULATOR MATERIAL          | : | SELF EXTINGUISHING THERMOPLASTIC - UL CLASS 94 V0<br>THE HOUSING WILL WITHSTAND EXPOSURE TO 260-265°C<br>IF WE USE PROTECTIVE ADHESIVE (type Kapton or Teflon)<br>OR PROTECTIVE METALLIC DEVICE |
| CONTACTS DIA ON ACTIVE AREA | : | Ø1 MM.  |
| CONTACTS MATERIAL           | : | COPPER ALLOY  |
| CONTACT PLATING             | : | GXT / GOLD OVER NICKEL (ACTIVE ZONE)<br>TIN OVER NICKEL (TERMINATION ZONE)  |
| FOR LEAD FREE PLATING       | : | 2 µMIN. TIN TOP OVER<br>1.27 µ MIN.NICKEL UNDER PLATE(ON TERMINATION ZONE)  |
| OPERATING TEMPERATURE       | : | -55°C +125°C  |
| OPERATING CURRENT           | : | 5 A PER CONTACT   |
| CONTACT RESISTANCE          | : | ≤10m Ω  |
| INSULATION RESISTANCE       | : | ≥5000M Ω  |
| MAXIMUM VOLTAGE             | : | 1000 V.r.m.s  |
| MECHANICAL ENDURANCE        | : | 200 MATINGS (For 64 code) 500 MATINGS (For 65 code).  |
| DAMP HEAT                   | : | 21 DAYS.  |
| WIRE SIZE                   | : | 0.6 MM <sup>2</sup> (AWG 20) MAX.   |

|            |   |       |       |       |       |       |       |       |       |       |      |       |
|------------|---|-------|-------|-------|-------|-------|-------|-------|-------|-------|------|-------|
| 50         | P | 66.65 | 52.68 | 61.11 | 11.08 | 14.99 | 11.09 | 5.85  | 55.07 | 13.31 | 1.50 | 1.0   |
|            | S | 66.65 | 52.30 | 61.11 | 10.62 | 14.99 | 11.21 | 6.05  | 55.07 | 13.31 | 1.10 | 0.8   |
| 37         | P | 68.94 | 55.30 | 63.50 | 8.23  | 12.17 | 11.09 | 5.85  | 57.45 | 10.46 | 1.50 | 1.0   |
|            | S | 68.94 | 54.71 | 63.50 | 7.77  | 12.17 | 11.21 | 6.05  | 57.45 | 10.46 | 1.10 | 0.8   |
| 25         | P | 52.65 | 38.84 | 47.04 | 8.23  | 12.17 | 11.07 | 5.85  | 41.02 | 10.46 | 1.10 | 0.8   |
|            | S | 52.65 | 38.25 | 47.04 | 7.77  | 12.17 | 11.21 | 6.05  | 41.02 | 10.46 | 1.10 | 0.8   |
| 15         | P | 38.76 | 25.12 | 33.32 | 8.23  | 12.17 | 10.99 | 5.85  | 27.25 | 10.46 | 1.10 | 0.8   |
|            | S | 38.76 | 24.54 | 33.32 | 7.77  | 12.17 | 11.21 | 6.05  | 27.25 | 10.46 | 1.10 | 0.8   |
| 09         | P | 30.43 | 16.79 | 24.99 | 8.23  | 12.17 | 10.99 | 5.85  | 19.02 | 10.46 | 1.10 | 0.8   |
|            | S | 30.43 | 16.21 | 24.99 | 7.77  | 12.17 | 11.21 | 6.05  | 19.02 | 10.46 | 1.10 | 0.8   |
| SHELL SIZE | A | +0,76 | +0,25 | ±0,12 | +0,25 | +0,76 | F MAX | +0,15 | +0,51 | +0,51 | ±0,2 | +0,22 |
|            | B | 0     | 0     | C     | D     | E     | 0     | G     | 0     | H     | 0    | J     |

NOTE:- 1) INSIDE DIMENSIONS OF THE MALE AND OUTSIDE DIMENSIONS OF THE FEMALE CONNECTOR  
2) ALL ACCESSORIES SHOWN IN ASSEMBLY OPTIONS SHOULD BE ORDERED SEPARATELY

ASSEMBLY OPTIONS

|  |  |             |    |    |            |    |             |            |             |             |            |             |    |
|--|--|-------------|----|----|------------|----|-------------|------------|-------------|-------------|------------|-------------|----|
| <p>FEMALE SCREW LOCK EXTENDED TYPE</p> <p>UNC 4-40,2B<br/>THREAD</p> <p>ORD CODE 8630-01-061</p> | <p>FEMALE SCREW LOCK<br/>EXTERNAL THREAD</p> <p>INTERNAL THREAD</p> <table border="1"> <tr> <td>8630-01LF</td> <td>M3</td> <td>M3</td> </tr> <tr> <td>8630-01ALF</td> <td>M3</td> <td>4-40 UNC 2B</td> </tr> <tr> <td>8630-01BLF</td> <td>4-40 UNC 2A</td> <td>4-40 UNC 2B</td> </tr> <tr> <td>8630-01CLF</td> <td>4-40 UNC 2A</td> <td>M3</td> </tr> </table> <p>ORD-CODE      EXTERNAL THREAD      INTERNAL THREAD</p> | 8630-01LF   | M3 | M3 | 8630-01ALF | M3 | 4-40 UNC 2B | 8630-01BLF | 4-40 UNC 2A | 4-40 UNC 2B | 8630-01CLF | 4-40 UNC 2A | M3 |
| 8630-01LF  | M3   | M3          |    |    |            |    |             |            |             |             |            |             |    |
| 8630-01ALF   | M3   | 4-40 UNC 2B |    |    |            |    |             |            |             |             |            |             |    |
| 8630-01BLF   | 4-40 UNC 2A  | 4-40 UNC 2B |    |    |            |    |             |            |             |             |            |             |    |
| 8630-01CLF   | 4-40 UNC 2A  | M3          |    |    |            |    |             |            |             |             |            |             |    |
| <p>MALE LEVER LOCK</p> <p>ORD CODE 8630-3427(EABC)</p> <p>ORD CODE 8630-3428(D)</p>              | <p>CONNECTOR WITH SPECIAL RIVETTED<br/>FEMALE SCREW LOCK</p> <p>6.4 MAX</p> <p>UNC 4-40,2B<br/>THREAD</p> <p>PREFIX: V</p>   |             |    |    |            |    |             |            |             |             |            |             |    |
| <p>CLINCH NUT</p> <p>PREFIX:<br/>O - UNC4-40<br/>L - M3</p>                                      | <p>WITH SHIELDING TERMINATION FINGERS</p> <p>OPTION: H</p>   |             |    |    |            |    |             |            |             |             |            |             |    |
|  | <p>FEMALE LEVER LOCK</p> <p>ORD CODE 8630-3425(EABC)</p> <p>ORD CODE 8630-3426(D)</p>  |             |    |    |            |    |             |            |             |             |            |             |    |

"This LF product meets European Union Directives and other country regulations as described in GS-22-008"  
Packaging as per GS-14-920  
Housing will withstand exposure to 260°C peak temp for 3.5sec

ORDERING INFORMATION

|                                |                                |  |
|--------------------------------|--------------------------------|--|
| SERIES                         | D B V 25 P 0 64 H T X B XXX LF | LEAD FREE                              |
| SHELL SIZE                     | E,A,B,C,D                      | SPECIAL CODES                          |
| OPTIONS                        |                                | INSULATOR COLOUR                       |
| BLANK-STANDARD                 |                                | BLANK- NATURAL                         |
| F - FLOAT MOUNTING             |                                | B - BLACK                              |
| L - CLINCH NUT (M3)            |                                | DIMPLES                                |
| O - CLINCH NUT (UNC)           |                                | X-ON MALE CONNECTORS ONLY              |
| V - FEM. SCREW LOCK HEX. (UNC) |                                | SHELL PLATING                          |
|                                |                                | BLANK-ZINC                             |
| NO.OF CONTACTS                 | 09,15,25,37,50                 | T-STD. TIN over Cu                     |
| CONTACTS                       |                                | OPTIONS                                |
| P - PIN                        |                                | BLANK - STD                            |
| S - SOCKET                     |                                | H - WITH SHIELDING TERMINATION FINGERS |
| TERMINATION TYPE               |                                | CONTACT PLATING                        |
| 0 - SOLDER BUCKET              |                                | 64 - 200 Mating cycles                 |
|                                |                                | 65 - 500 Mating cycles                 |

|             |            |         |            |                   |                     |            |                |   |
|-------------|------------|---------|------------|-------------------|---------------------|------------|----------------|---|
| mat'l. code | SEE NOTE 4 | surface | ISO 1302   | tolerance         | ISO 406 ISO 1101    | projection | product family | D-SUB   |
| ltr         | ecn no     | dr      | date       | tolerances unless | otherwise specified | MM         | title          | D- SUB SOLDER BUCKET CONNECTOR<br>(WITH ASSEMBLY OPTIONS) |
| N           | I11-0003   | AMR     | 2011-01-06 | angles            | linear              |            |                |   |
| H           | I07-0175   | MRA     | 2007-12-17 | 0°±1°             | .00±0.1             | scale      | dwg no         | sheet 1 of 1  |
| J           | I08-0131   | MRA     | 2008-10-06 | dr                | GEORGE.V.JOSEPH     | 1999-03-20 |                |   |
| K           | I09-0121   | MRA     | 2009-07-01 | enr               | GEORGE.V.JOSEPH     | 1999-03-20 | type           | Product Customer Drawing                                  |
| L           | I09-0140   | MRA     | 2009-07-14 | chr               | ABHILASH.M.R        | 2009-07-01 |                |   |
| M           | I09-0195   | MRA     | 2009-09-18 | appd              | SUDHIR.VARMA        | 2009-07-01 | C-DSUB-0064    |   |
| sheet index | revision   | N       |            |                   |                     |            |                |   |
|             | sheet      | 1       |            |                   |                     |            |                |   |



Copyright FCI