

**86303637BLF - D-
subminiature : Straight Exit
Snap-together Plastic Hood for
9 position connector**



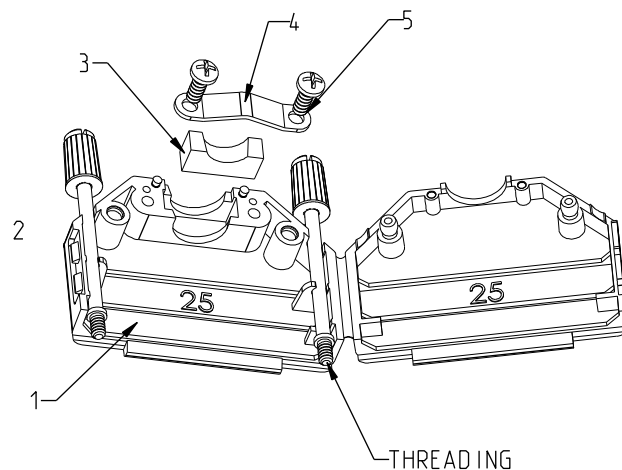
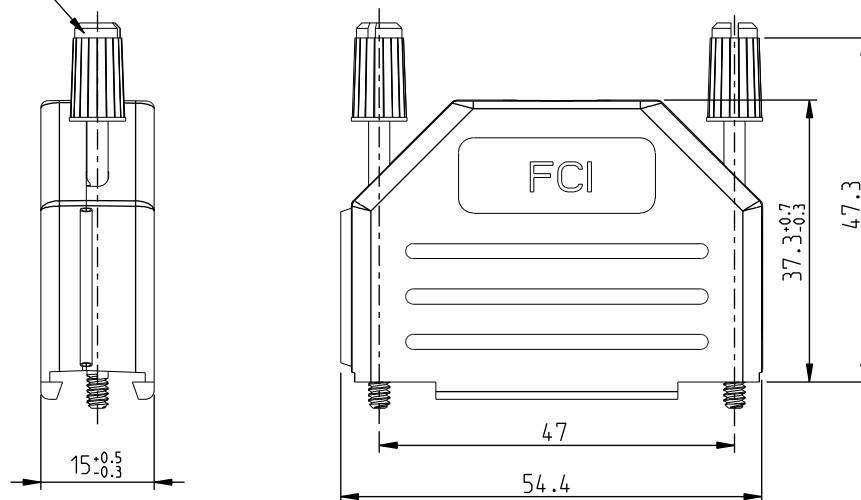
www.fci.com

Specifications

General	
Number of contacts (Total)	9 Position
Orientation	Straight Exit
Packaging	Bulk
Product Type	Hood
Dimensional	
Size (Shell)	E
Electrical	
EMI/RFI performance	Non Shielded
Mounting	
Attachment	Cable
Physical	
Material (Housing)	Plastic
Material (Characteristics)	Thermoplastic
Temperature (Operating - range)	-40°C to +120°C
Approvals / Certifications	
Approvals / Certifications	UL rated 94 V2
Other Features	
Most Popular Configuration	Yes
Comments	"Snap Together" Plastic Hood
Pack factor	50

SIZE	Part Num.	Threading	Jackscrew colour
25	86303639BLF	UNC 4.40	black
	86303644BLF	M3	grey
	86303644B100LF	M3	grey

See table for
colour coding



NOTES:

Material: Nylon (UL94V-2)

Cable strain relief: Cable clamp with
Self-taping screws

Temperature range: -40°C to 95°C

Cable diameter: 4.0 to 11.0mm

Jackscrew colour: black for 4.40 UNC}
grey for M3.0

Packaging: - Part Num. ending BLF = Box of 100
individual sets.
- Part Num. ending B100LF = Box of bulk
components in plastic bags (see
quantity on the table).

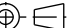


Cable clamp screwing force (max): 70 Ncm

Jack screws screwing force (max): 50 Ncm

- The "LF" product meets European Union Directives and other country regulations as described in GS-22-008.
- The product is not intended to be exposed to a manufacturing solder process.
- packaging spec; see GS-14-920.

DESIGNATION	REP	Qty per set	Qty per bulk
BACKSHELL	1	1	100
JACKSCREWS	2	2	200
GROMMET	3	1	100
CABLECLAMP	4	1	100
SCREWS POZIDRIVE	5	2	200

rev	ecn no	dr	date
A	LS05-0086	LGO	2005/10/10
B	LS06-0084	LGO	2006/06/20
C	LS08-0155	MPE	2008/06/27
D	F09-0223	LSA	2009/11/24
E	F10-0083	LSA	2010/08/04
-	-	-	-
-	-	-	-

www.fciconnect.com			surface ISO 1302		- ✓	tolerance std ISO 406 ISO 1101		projection 	
			TOLERANCES UNLESS OTHERWISE SPECIFIED						
Dr	GOISNARD L	2004.03.22	ANGULAR	LINEAR	0.X	±/	size	Scale	
Eng	PESSON M	2004.03.22			0.XX	±/	A3	3:2	
Chr	LEGARE .P	2004.03.22			0.XXX	±/	ECN	F10-0083	
Appr	LEGARE P	2004.03.22	Product family D-SUB HOODS				Spec ref		
			title D-SUB PLASTIC SHELLS STRAIGHT SNAP-TOGETHER				dwg no 10061215C		Rev E
			catalog no		see tables		CUSTOMER	sheet 1 of 3	

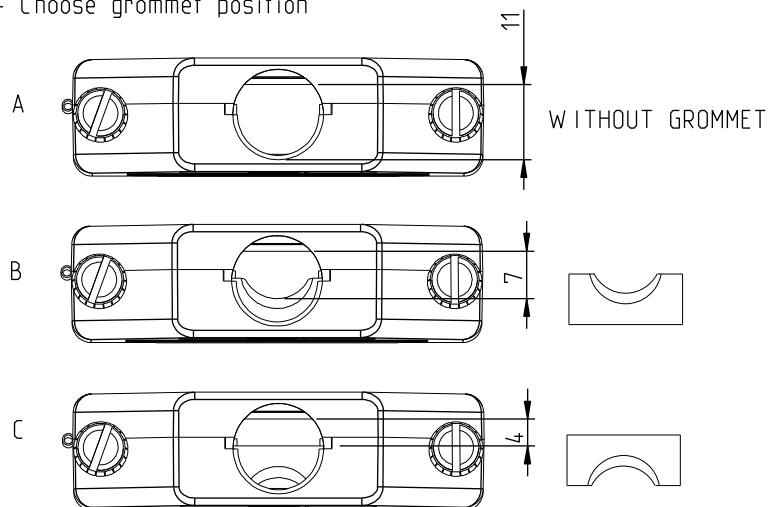
REV E - 2006-03-28

Copyright FCI.

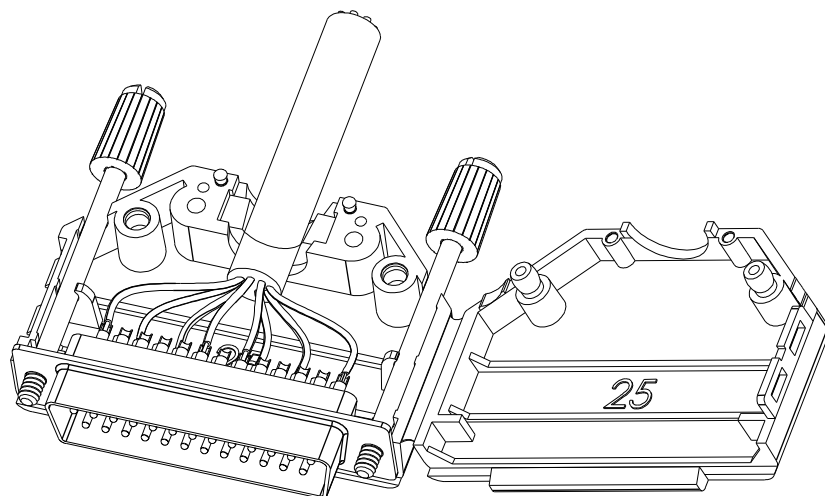
1					2					3					4																																																																																									
<table><tr><td>SIZE</td><td>Part Num.</td><td>Threading</td><td>Jackscrew colour</td><td>Packaging box</td></tr><tr><td rowspan="3">9</td><td>86303637BLF</td><td>UNC 4.40</td><td>Black</td><td>Individual sets</td></tr><tr><td>86553329BLF</td><td>M3</td><td>Grey</td><td>Individual sets</td></tr><tr><td>86553329B100LF</td><td>M3</td><td>Grey</td><td>Individual bulks</td></tr></table>					SIZE	Part Num.	Threading	Jackscrew colour	Packaging box	9	86303637BLF	UNC 4.40	Black	Individual sets	86553329BLF	M3	Grey	Individual sets	86553329B100LF	M3	Grey	Individual bulks	<table><tr><td>SIZE</td><td>Part Num.</td><td>Threading</td><td>Jackscrew colour</td><td>Packaging box</td></tr><tr><td rowspan="3">15</td><td>86303638BLF</td><td>UNC 4.40</td><td>Black</td><td>Individual sets</td></tr><tr><td>86553330BLF</td><td>M3</td><td>Grey</td><td>Individual sets</td></tr><tr><td>86553330B100LF</td><td>M3</td><td>Grey</td><td>Individual bulks</td></tr></table>					SIZE	Part Num.	Threading	Jackscrew colour	Packaging box	15	86303638BLF	UNC 4.40	Black	Individual sets	86553330BLF	M3	Grey	Individual sets	86553330B100LF	M3	Grey	Individual bulks	<table><tr><td>SIZE</td><td>Part Num.</td><td>Threading</td><td>Jackscrew colour</td><td>Packaging box</td></tr><tr><td rowspan="3">37</td><td>86303640BLF</td><td>UNC 4.40</td><td>black</td><td></td></tr><tr><td>86303645BLF</td><td>M3</td><td>grey</td><td></td></tr><tr><td>86303645B100LF</td><td>M3</td><td>grey</td><td></td></tr></table>					SIZE	Part Num.	Threading	Jackscrew colour	Packaging box	37	86303640BLF	UNC 4.40	black		86303645BLF	M3	grey		86303645B100LF	M3	grey																																					
SIZE	Part Num.	Threading	Jackscrew colour	Packaging box																																																																																																				
9	86303637BLF	UNC 4.40	Black	Individual sets																																																																																																				
	86553329BLF	M3	Grey	Individual sets																																																																																																				
	86553329B100LF	M3	Grey	Individual bulks																																																																																																				
SIZE	Part Num.	Threading	Jackscrew colour	Packaging box																																																																																																				
15	86303638BLF	UNC 4.40	Black	Individual sets																																																																																																				
	86553330BLF	M3	Grey	Individual sets																																																																																																				
	86553330B100LF	M3	Grey	Individual bulks																																																																																																				
SIZE	Part Num.	Threading	Jackscrew colour	Packaging box																																																																																																				
37	86303640BLF	UNC 4.40	black																																																																																																					
	86303645BLF	M3	grey																																																																																																					
	86303645B100LF	M3	grey																																																																																																					
					<table><tr><td colspan="3">www.fciconnect.com</td><td>surface ISO 1302</td><td>-</td><td colspan="2">tolerance std ISO 406 ISO 1101</td><td>projection ⊕</td><td>mm</td></tr><tr><td colspan="3"></td><td colspan="2">TOLERANCES UNLESS OTHERWISE SPECIFIED</td><td colspan="2"></td><td>size A3</td><td>Scale 1:1</td></tr><tr><td>Dr</td><td>GOISNARD L</td><td>2004.03.22</td><td rowspan="2">ANGULAR</td><td rowspan="2">LINEAR</td><td>0.X</td><td>±/</td><td rowspan="2">ECN</td><td rowspan="2">F10-0083</td></tr><tr><td>Eng</td><td>PESSON M</td><td>2004.03.22</td><td>0.XX</td><td>±/</td></tr><tr><td>Chr</td><td>LEGARE .P</td><td>2004.03.22</td><td>0° ±/</td><td></td><td>0.XXX</td><td>±/</td><td rowspan="69">Spec ref</td><td rowspan="2">-</td></tr><tr><td>Appr</td><td>LEGARE P</td><td>2004.03.22</td><td colspan="2">Product family</td><td colspan="4">D-SUB HOODS</td></tr><tr><td colspan="3">FCI</td><td colspan="3">Title</td><td colspan="2">10061215C</td><td>Rev.</td></tr><tr><td colspan="3"></td><td colspan="3">D-SUB PLASTIC SHELLS</td><td colspan="2"></td><td>E</td></tr><tr><td colspan="3"></td><td colspan="3">STRAIGHT SNAP-TOGETHER</td><td colspan="2"></td><td></td></tr><tr><td colspan="3"></td><td colspan="3">catalog no</td><td colspan="2">see tables</td><td></td></tr><tr><td colspan="3"></td><td colspan="3"></td><td colspan="2" rowspan="63">CUSTOMER</td><td>sheet 2 of 3</td></tr></table>					www.fciconnect.com			surface ISO 1302	-	tolerance std ISO 406 ISO 1101		projection ⊕	mm				TOLERANCES UNLESS OTHERWISE SPECIFIED				size A3	Scale 1:1	Dr	GOISNARD L	2004.03.22	ANGULAR	LINEAR	0.X	±/	ECN	F10-0083	Eng	PESSON M	2004.03.22	0.XX	±/	Chr	LEGARE .P	2004.03.22	0° ±/		0.XXX	±/	Spec ref	-	Appr	LEGARE P	2004.03.22	Product family		D-SUB HOODS				FCI			Title			10061215C		Rev.				D-SUB PLASTIC SHELLS					E				STRAIGHT SNAP-TOGETHER									catalog no			see tables									CUSTOMER		sheet 2 of 3
www.fciconnect.com			surface ISO 1302	-	tolerance std ISO 406 ISO 1101		projection ⊕	mm																																																																																																
			TOLERANCES UNLESS OTHERWISE SPECIFIED				size A3	Scale 1:1																																																																																																
Dr	GOISNARD L	2004.03.22	ANGULAR	LINEAR	0.X	±/	ECN	F10-0083																																																																																																
Eng	PESSON M	2004.03.22			0.XX	±/																																																																																																		
Chr	LEGARE .P	2004.03.22	0° ±/		0.XXX	±/	Spec ref	-																																																																																																
Appr	LEGARE P	2004.03.22	Product family		D-SUB HOODS																																																																																																			
FCI			Title			10061215C		Rev.																																																																																																
			D-SUB PLASTIC SHELLS					E																																																																																																
			STRAIGHT SNAP-TOGETHER																																																																																																					
			catalog no			see tables																																																																																																		
						CUSTOMER		sheet 2 of 3																																																																																																
REV C - 2006-03-28																																																																																																								
1					2					3					4																																																																																									

CABLING INSTRUCTIONS

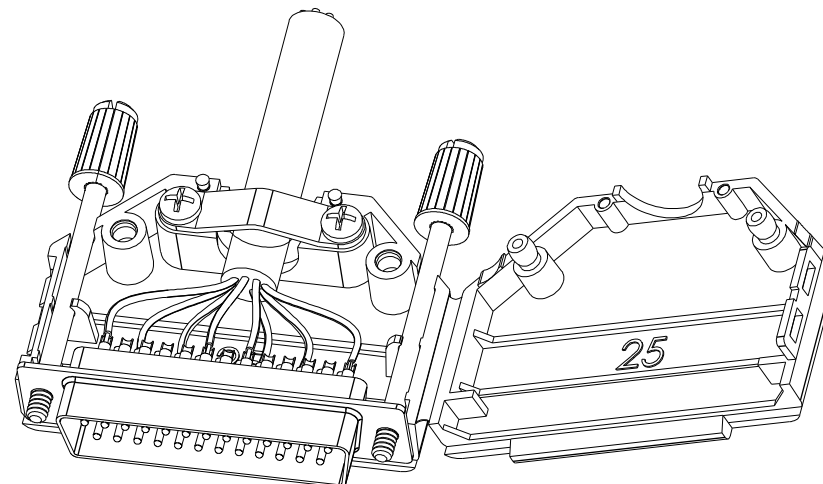
1- Choose grommet position



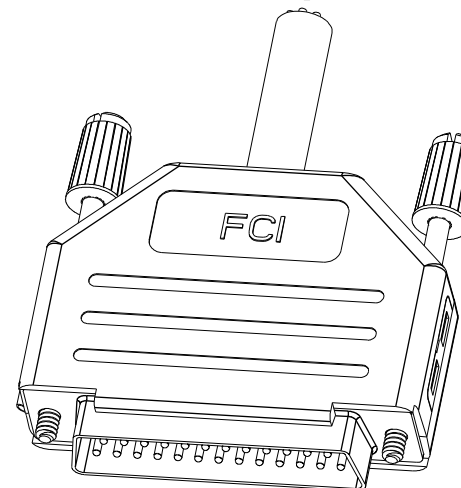
2- Mount connector and cable inside



3- Mount cableclamp and screws



4- Close the backshell and click together



Copyright FCI.

www.fciconnect.com			surface ISO 1302	✓	tolerance std ISO 406 ISO 1101	projection ⊕	mm ↔
			TOLERANCES UNLESS OTHERWISE SPECIFIED			size A3	Scale 1:1
Dr	GOISNARD L	2004.03.22	ANGULAR	LINEAR	0.X ±/		
Eng	PESSON M	2004.03.22			0.XX ±/		
Chr	LEGARE .P	2004.03.22	0° ±/		0.XXX ±/	ECN	F10-0083
Appr	LEGARE P	2004.03.22	Product family			Spec ref	-
FCI			Title			dwg no	Rev.
			D-SUB PLASTIC SHELLS			10061215C	E
			STRAIGHT SNAP-TOGETHER				
			catalog no			see tables	sheet 3 of 3
						CUSTOMER	

REV E - 2006-03-28

PDM: Rev:E

STATUS Released

Printed: Oct 01, 2010