

71600-006LF - Quickie® :
Receptacle -Double row - 6
Positions - 2.54 mm (0.1 in.)



www.fci.com

Mating Half

71918-106LF

71922-106LF

Specifications

General

Insulation Displacement Contact (IDC)	IDC Receptacle
Number of contacts (Total)	6
Number of rows	2
Polarization	Center and Dual
Strain Relief	Standard
Style	Standard Single Beam
Termination Style	IDC
Application Equipment	QP-104 QP-112 QP-106
Mating half	Mates with shrouded Eject Latch Header Latch 1

Electrical

Current rating	1 amp Continuous
Resistance (Contact)	15 m ohms max.
Resistance (Insulation)	50000 M-ohms
Voltage rating	1000V AC rms

Physical

Color (Housing)	Grey
Material (Contact)	Phosphor Bronze
Material (Housing)	Glass - Filled Thermoplastic Polyester
Plating (Contact area)	0.76 µm (30 µin.) Gold
Underplating (Contact)	1.27 µm (50 µin.) Nickel
Flammability rating	UL 94 V-0
Temperature (Range)	-65°C to +105°C

Approvals / Certifications

UL File Number	E66906
----------------	--------

Printed: Apr 27, 2012 ■

CORE RANGE

STRAIN RELIEF	Nbr OF POSITIONS
0/1	04
0/1	06
0/1	08
0/1	10
0/1	14
0/1	16
0/1	18
0/1	20
0/1	24
0/1	26
0/1	30
0/1	34
0/1	40
0/1	50
0/1	60
0/1	64

STRAIN RELIEF	Nbr OF POSITIONS
0/1	04
0/1	06
0/1	08
0/1	10
0/1	14
0/1	16
0/1	18
0/1	20
0/1	24
0/1	26
0/1	30
0/1	34
0/1	40
0/1	50
0/1	60
0/1	64

PLATING

0.76µm GOLD ON CONTACT AREA
1.27 µm Ni REMAINDER OF PRODUCT

CATALOGUE RANGE

STRAIN RELIEF	Nbr OF POSITIONS
2/6	04
2/6	06
2/6	08
2/6	10
2/6	14
2/6	16
2/6	18
2/6	20
2/6	24
2/6	26
2/6	30
2/6	34
2/6	40
2/6	50
2/6	60
2/6	64

STRAIN RELIEF	Nbr OF POSITIONS
2/6	04
2/6	06
2/6	08
2/6	10
2/6	14
2/6	16
2/6	18
2/6	20
2/6	24
2/6	26
2/6	30
2/6	34
2/6	40
2/6	50
2/6	60
2/6	64

PLATING

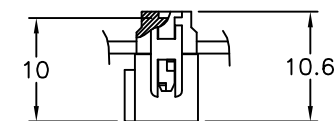
0.76µm GOLD ON CONTACT AREA
1.27 µm Ni REMAINDER OF PRODUCT

624

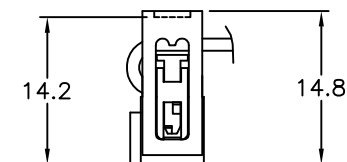
304

204 / 224

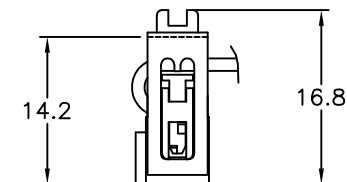
004

DASHES NOT
AVAILABLE

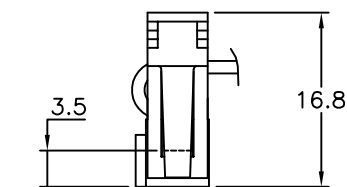
WITHOUT STRAIN RELIEF



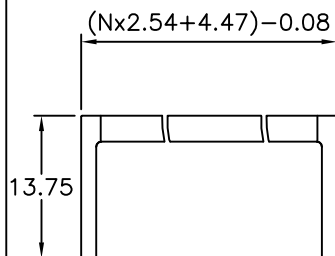
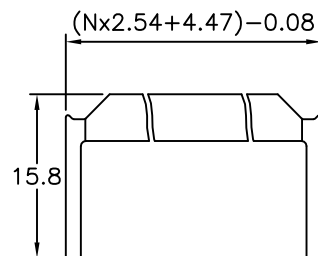
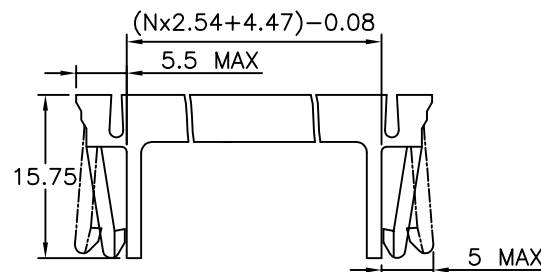
WITH LOW PROFILE STRAIN RELIEF



WITH STANDARD STRAIN RELIEF



WITH LATCHING STRAIN RELIEF

LOW PROFILE
STRAIN RELIEFSTANDARD
STRAIN RELIEFLATCHING STRAIN RELIEF
FOR SLIM HEADER

71600-6YYLF	●					●
71600-3YYLF		●	●			
71600-2YYLF	●				●	
71600-1YYLF	●			●		
71600-0YYLF	●		●			
PRODUCT NUMBER	WITH	WITHOUT	STANDARD	WITHOUT	LOW PROFILE	LATCHING
	CENTRAL KEY		STRAIN RELIEF			

mat'l. code				surface		tolerance		projection		product family	
				ISO 1302		ISO 406 ISO 1101		mm		QUICKIE	
ltr	ecn no	dr	date	tolerances unless otherwise specified						title	
X	F70666	AAN	97.11.05	angles						IDC RECEPT	
Y	F10121	DLE	01.01.24	linear						DR	
AA	F10199	GCO	01.04.26					scale N/A		sheet 2 of - size	
AB	F03019	DLE	03.01.23	dr	D.LE	01.01.24			71600		A3
AC	F05-0180	LMU	05.04.22	enrg	P.NZ	01.01.24			type		CUSTOMER Drawing
AD	F06-0270	LMU	06.09.12	chr	JF.N	01.01.24					
AE	F06-0274	LMU	06.09.25	appd	P.NZ	01.01.24					
sheet	revision										
index	sheet										

CSA File Number	LR46923
Approvals / Certifications	UL and CSA Approved
Other Features	
Packaging (Type)	Tube