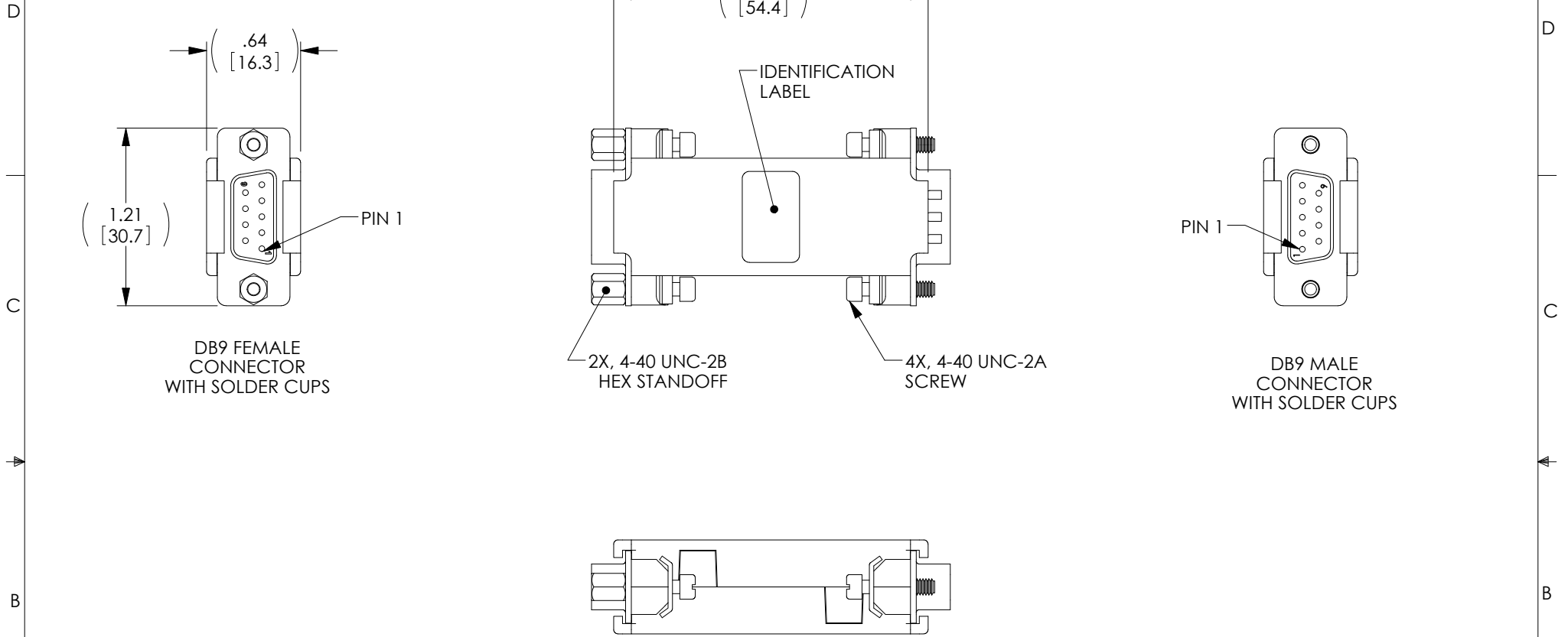


THE INFORMATION CONTAINED IN THIS DRAWING IS THE SOLE PROPERTY OF L-COM, INC. ANY REPRODUCTION IN PART OR WHOLE WITHOUT THE WRITTEN PERMISSION OF L-COM, INC. IS PROHIBITED.

REVISIONS			
REV	DESCRIPTION	DATE	APPROVED
A	INITIAL RELEASE	8/18/11	D.FRISIELLO



NOTES:

- ENCLOSURE IS ABS PLASTIC COLOR: DARK GRAY.
- COVER HALVES SNAP TOGETHER TO RETAIN CONNECTORS AND CAPTIVE HARDWARE.
- ALL DIMENSIONS ARE FOR REFERENCE ONLY.
- COMPONENT ASSEMBLY IS SHIPPED UN-ASSEMBLED.
- JUMPER WIRES ARE SUPPLIED SEPARATELY.
- COMPONENT ASSEMBLY SHALL BE INDIVIDUALLY PACKAGED IN ACCORDANCE WITH L-COM SPECIFICATION PS-0031.

RoHS Compliant ✓

UNLESS OTHERWISE SPECIFIED, DIMENSIONS ARE IN INCHES [mm] OVERALL CABLE LENGTH TOLERANCE: ≤ 12 [305] = +1 [25] / -0 > 12 [305] ≤ 60 [1524] = +2 [51] / -0 > 60 [1524] ≤ 120 [3048] = +4 [102] / -0 > 120 [3048] ≤ 300 [7620] = +6 [152] / -0 > 300 [7620] = +3% / -0% ALL OTHER DIMENSIONAL TOLERANCES: .X = ±.2 .XX = ±.02 .XXX = ±.005	APPROVALS DRAWN BY D.FRISIELLO	DATE 8/18/11	45 BEECHWOOD DRIVE NORTH ANDOVER, MA 01845			
	CHECKED BY D. PARHAM	DATE 8/18/11		CATEGORY DATA		
	APPROVED BY S. SMITH	DATE 8/18/11	PRODUCT DESCRIPTION ADAPTER, KIT UNWIRED DB9M/F			
	PROJECTION 	CONFIGURATION DETAILS OF UNDIMENSIONED FEATURES MAY VARY	COLOR VARIATIONS MAY OCCUR	SIZE A	FSCM NO. 43321	DWG. NO. DIY9MF
SCALE: NONE		CAD FILE: DIY9MF.SLDDRW		SHEET 1 OF 1		