

# EL-GFX-2

## Temperature and Relative Humidity Data Logger with Graphic Screen

### ORDERING INFORMATION

Standard Data Logger (Data Logger, 2 x Batteries, USB cover, Mounting Clip, Micro USB cable)	EL-GFX-2
--	----------

Replacement Battery (2 Required)	BAT 3V6 ½AA
-------------------------------------	-------------

### FEATURES

- Rugged and robust, IP67 construction
- -30 to +80 °C and 0 to 100% RH measurement ranges
- Logging rates between 10 seconds and 12 hours
- Stores over 250,000 readings
- On screen menu and graphing to start, stop, review and restart the logger in the field
- Micro USB interface for PC based set-up and data download
- Immediate, delayed, push-button or temperature/RH triggered start mode
- User-programmable alarm thresholds
- Graphic LCD shows real-time readings, graph and current status
- User set audible alarm
- Highly visible confidence/alarm LEDs
- Supplied with user replaceable ½ AA batteries



The EL-GFX-2 standalone USB data logger measures and stores up to 252,928 temperature and humidity readings over a -30 to +80°C (-22 to 176 °F) and 0 to 100%RH range at a resolution of 0.1°C and 0.1%RH. Using the Windows control software (available as a free download from [www.easylogusb.com](http://www.easylogusb.com)), users can quickly set up the data logger and view downloaded data by connecting the device to the PC's USB port using the supplied cable.

The data logger features a high-contrast graphic LCD and three-input buttons. This allows users to start, stop and restart the data logger using on-screen menus. This menu also provides real-time analysis of data either as a data summary (showing highest & lowest readings and alarm conditions) or as a graph that updates as new data is added. Multiple data logging sessions can be stored on the device ready for upload to a PC at a later date.

The data logger's robust design provides IP-67 waterproof protection and the two replaceable ½AA batteries typically allow logging for up to one year.

# EL-GFX-2

## Temperature and Relative Humidity Data Logger with Graphic Screen

Specifications		Minimum	Typical	Maximum	Unit
Relative Humidity	Measurement range	0		100	%RH
	Internal resolution		±0.1		%RH
	Accuracy (overall error)		±3.0*	±5.0	%RH
	Repeatability		0.5		%RH
	Long term stability		0.5		%RH/year
Temperature	Measurement range	-30(-22)		+80 (+176)	°C (°F)
	Internal resolution		0.1 (0.1)		°C (°F)
	Accuracy (overall error)		±0.5 (±1.0)	±2.0 (±4.0)	°C (°F)
	Repeatability		±0.1 (±0.2)		°C (°F)
Dew Point	Accuracy (overall error)		±1.1 (±2.0)**		°C (°F)
Logging Rate		Every 10 seconds		Every 12 hours	Time
Operating Temperature Range***		+30 (-22)		+80 (+176)	°C (°F)
2 x ½AA 3.6V Lithium Battery Life			1 †		Year

\* This specifies the overall error in the logged readings, for relative humidity measurements between 20 and 80%RH.

\*\* This specifies the overall error in the calculated dew point for relative humidity measurements between 40 and 100%RH at 25°C.

\*\*\* At temperatures below -5°C the LCD will exhibit slower response times. The LCD will be disabled at temperatures under -20°C and above 70°C.

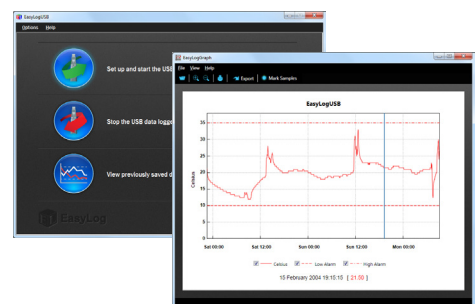
† At 25°C and 10 minute logging rate, with no alarm LEDs or sounder and minimal LCD use.

### EL-WIN-USB (CONTROL SOFTWARE)

Lascar's Easylog USB control software is available to download from [www.easylogusb.com](http://www.easylogusb.com). Easy to install and use, the control software runs under Windows XP, Vista and Windows 7. The software is used to set-up the data logger as well as download, graph and export data to Excel. Each stored logging session is saved as a separate file.

The software allows the following parameters to be configured:

- Logger name
- Measurement parameter (°C or °F)
- Logging Rate (customisable between 10 seconds and 12 hours)
- High and low temperature alarms
- Immediate, delayed, push-button or temperature/humidity triggered start mode
- Disable or enable LEDs and sounder with delayed activation
- Display and backlight behaviour after button press



The latest version of the control software may be downloaded free of charge from [www.easylogusb.com](http://www.easylogusb.com)

# EL-GFX-2


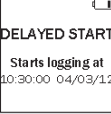





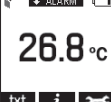
## Temperature and Relative Humidity Data Logger with Graphic Screen

### DIMENSIONS

All dimensions in mm (inches)



### MENU BUTTON FUNCTIONS AND LED SCREEN INDICATION

 <p>ARMED! Press button to start logging</p> <p>Button</p>	 <p>DELATED START Starts logging at 10:30:00 04/03/12</p> <p>Time</p>	 <p>DELATED START Starts logging when temperature &gt;36.2°C</p> <p>Value</p>	<p><b>START</b></p> <ul style="list-style-type: none"> <li>Loggers can be started immediately on a button press, delayed to a specific time or delayed to specific temp/RH reading</li> </ul>	 <p>MUTE ALARM</p> <ul style="list-style-type: none"> <li>Audible alarm can be muted if required</li> </ul>	<p><b>MUTE ALARM</b></p>
 <p><b>STOP</b></p> <ul style="list-style-type: none"> <li>The logger can be stopped using the buttons</li> </ul>			 <p><b>SUMMARY DATA</b></p> <ul style="list-style-type: none"> <li>Summary screen displays max/min log and last log. Reset function clears summary if required</li> </ul>	<p><b>SUMMARY DATA</b></p>	
 <p><b>DISPLAY DATA</b></p> <ul style="list-style-type: none"> <li>Data can be displayed on screen in tabular or graphical format</li> </ul>			 <p><b>LOCK MENU BUTTONS</b></p> <ul style="list-style-type: none"> <li>"Locked" mode can be unticked during PC set-up if required</li> <li>When in locked mode, the logger can only be stopped and re-started using a PC loaded with the unit's configuration software</li> </ul>		

# EL-GFX-2

## Temperature and Relative Humidity Data Logger with Graphic Screen

### BATTERY REPLACEMENT

We recommend that you replace the batteries every 12 months, or prior to logging critical data.

The EL-GFX-2 does not lose its stored readings when the batteries are discharged or when the batteries are replaced; however, the data logging process will be stopped. If the batteries are changed within a 2 minute window the EL-GFX-2 will retain its settings (internal clock and logging mode). This will allow logging to be restarted without additional connection to a PC via USB.

Only use 2 x 3.6V ½AA lithium batteries. Do not mix battery types and do not mix new and old batteries. Before replacing the batteries, unplug the EL-GFX-2 from the PC.

### WARNING

Handle lithium batteries carefully, observe warnings on battery casing. Dispose of in accordance with local regulations.

Module House  
Whiteparish, Salisbury  
Wiltshire SP5 2SJ  
UK  
T +44 (1794) 884567  
F +44 (1794) 884616  
E sales@lascar.co.uk

4258 West 12th Street  
Erie  
PA 16505  
USA  
T +1 (814) 835 0621  
F +1 (814) 838 8141  
E us-sales@lascarelectronics.com

8th Floor, China Aerospace Centre  
143 Hoi Bun Road  
Kwun Tong, Kowloon  
HONG KONG  
T +852 2797 3219  
F +852 2343 6187  
E saleshk@lascar.com.hk



[www.lascarelectronics.com](http://www.lascarelectronics.com)

