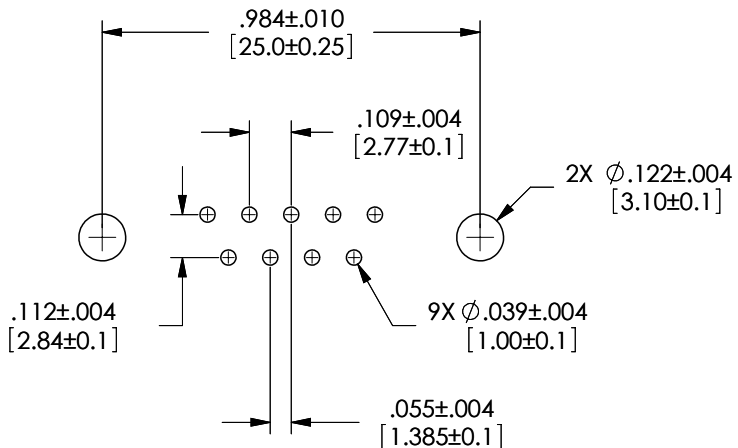
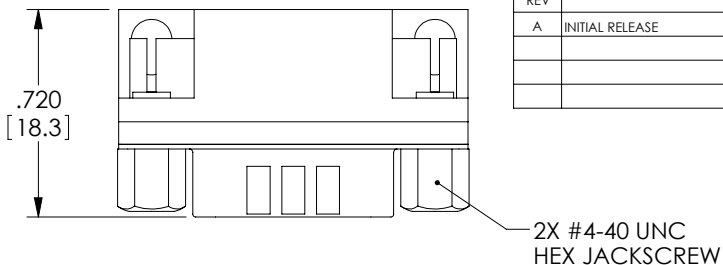
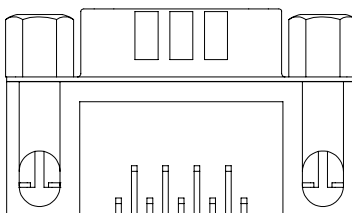
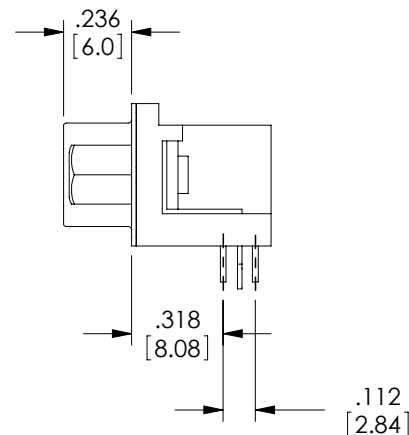
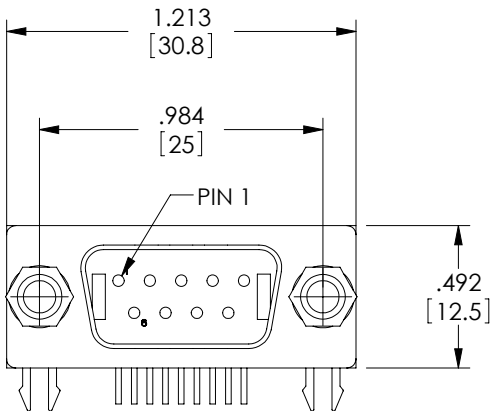


THE INFORMATION CONTAINED IN THIS DRAWING IS THE SOLE PROPERTY OF L-COM, INC. ANY REPRODUCTION IN PART OR WHOLE WITHOUT THE WRITTEN PERMISSION OF L-COM, INC. IS PROHIBITED.

REVISIONS			
REV	DESCRIPTION	DATE	APPROVED
A	INITIAL RELEASE	5/3/11	D.GRIFFIN



**PCB LAYOUT**



**NOTES:**

**MATERIALS:**

CONTACTS: BRASS  
SHELLS: COLD ROLLED STEEL  
INSULATOR: PBT, UL94V-0, BLACK  
JACKSCREWS: BRASS

**FINISH:**

CONTACT SURFACES: GOLD FLASH  
SHELL: NICKEL PLATED  
JACKSCREWS: NICKEL PLATED

**ELECTRICAL:**

DIELECTRIC WITHSTANDING VOLTAGE: AC 1000 V r.m.s.  
CONTACT CURRENT RATING: 1 AMPERE  
INSULATION RESISTANCE: 500 MEGOHMS MINIMUM AT DC 500V  
CONTACT RESISTANCE: 25 MILLIOHMS MAXIMUM

**MISCELLANEOUS:**

OPERATING TEMPERATURE: -55°C ~ 105°C  
ALL DIMENSIONS ARE FOR REFERENCE ONLY  
CONNECTOR SHALL BE PACKAGED 10 CONNECTORS PER TRAY AND  
LABELED WITH STANDARD L-COM PRODUCT LABEL.

APPROVED SOURCE:  
E-CONN  
PART NUMBER: DSB5-09M1-KNRO-04

**RoHS Compliant** ✓

UNLESS OTHERWISE SPECIFIED, DIMENSIONS ARE IN INCHES [mm] OVERALL CABLE LENGTH TOLERANCE: ≤12 [305] = +1 [25] / -0 >12 [305] ≤60 [1524] = +2 [51] / -0 >60 [1524] ≤120 [3048] = +4 [102] / -0 >120 [3048] ≤300 [7620] = +6 [152] / -0 >300 [7620] = +3% / -0%	APPROVALS	DATE		45 BEECHWOOD DRIVE NORTH ANDOVER, MA 01845
	DRAWN BY D. CASTRO	4/1/11		
ALL OTHER DIMENSIONAL TOLERANCES: .X = ±.2 .XX = ±.02 .XXX = ±.005	CHECKED BY D. PARHAM	4/7/11	CATEGORY DATA	
	APPROVED BY S. SMITH	5/2/11	PRODUCT DESCRIPTION CONNECTOR, DB9M 90DEG PCB	
PROJECTION 	COLOR VARIATIONS MAY OCCUR	SIZE <b>A</b>	FSCM NO. <b>43321</b>	DWG. NO. SD9P-RA-PC
1AC06-011		SCALE: NONE	CAD FILE: SD9P-RA-PC.SLDDRW	SHEET 1 OF 1