



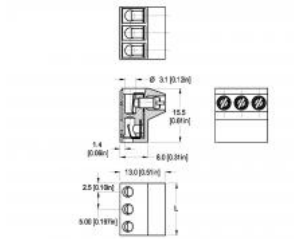
SEARCH SITE

PLUG-IN SCREW CONNECTOR SYSTEM FOR PRINTED CIRCUIT BOARDS

**971-FBS (-DS)**

5.00 mm (0.197 in) Spacing - 2-24 poles

[Print this page](#)



[Distributor stock check](#)

[additional photos](#)

[view 3d model](#)

TECHNICAL INFORMATION

APPROVAL INFORMATION

PLUGS WITH

HOW TO ORDER

**Description**

Plug

End-to-end stackable while maintaining the 5 mm spacing.

**Technical Data**

**Center to Center Spacing:** 5.000 mm (0.197 in)

**Nominal Cross Section:** 2.5 mm<sup>2</sup> (3875 mils<sup>2</sup>)

**Wire Stripping Length:** 6.500 mm (0.256 in)

**Bill of Materials**

**Pole Version :** 2-12

**Molding :** Polyamide, Self extinguishing UL 94, V-0

**Color :** Grey

**Temperature limits :** Short Time : 140°C (284°F)

Continuous : 105°C (221°F)

Low Limit : -40°C (-40°F)

**Ambient Temp. Range (°C) :** -40°C to 40°C

**Comparative Tracking Index :** CTI ≥ 600 V

**Oxygen Index Rating :** 32 %

**Pole Version :** 13-24

**Molding :** Polyamide (glass fiber reinforced), Self extinguishing UL 94, V-0

**Color :** Grey

**Temperature limits :** Short Time : 200°C (392°F)

Continuous : 105°C (221°F)

Low Limit : -40°C (-40°F)

**Comparative Tracking Index :** CTI ≥ > 175 V

**Oxygen Index Rating :** 33 %

**Terminal Body:** Tin plated copper alloy

: Tin plated copper alloy

**Visual Description**

RoHS WEEE Pb free surface compliant





**Spring Clip:** Stainless steel strip

**Screw:** Slotted head, zinc plated blue passivated, steel substrate M3

**Approval Information**

UL File No. [E69841](#) | CSA File No. [LR24322](#)

	TYPE (Spacing)	Current (A)	Voltage (V)	Application Group	AWG	Screw Tightening Torque
	971-FBS (-DS) 5.0 mm	10	300	B, D	22-14	4.5 lbfin
	971-FBS (-DS) 5.0 mm	20	300	B	26-12	0.4 Nm
		10	300	D, E	26-12	0.4 Nm

UL: 24-26 AWG range for factory wiring only.

**International Approval Information**



Rated Impulse Withstand Voltage : 2500 V

**Plug-In Direction and Wire Entrance Parallel to PCB**

**Plug-In Direction and Wire Entrance Perpendicular to PCB**



**TYPE 950-SVG (-DS)**  
5.00 mm spacing - 2-32 poles



**TYPE 971-FBSP**  
5.00 mm spacing - 2-12 poles



**TYPE 951-B-SV (-DS)**  
5.00 mm spacing - 2-12 poles



**TYPE 971-SLK /-SLS /-SLW**  
5.00 mm spacing - 2-64 poles

**Please fill in the How to Order box**

- Request Sample                      Quantity
- Request Quote                        Quantity

**971-FBS**

Wire protector:

Poles:

**OPTIONS:**

- CN: Consecutive Numbering (hot stamped numbers)
- G05: Gold Plating (5 micro inches)
- G30: Gold Plating (30 micro inches)
- S30: Silver Plating (30 micro inches)
- SM: Special Marking (please provide sketch)
- WG: Wire Guide

**Accessories**

[970-J2, Jumper](#)

[BST -3.50/ -5.00/ -5.08/ -7.50/ -10.00/ -10.16, Self Adhesive Marking Strips](#)

[970-J1, Jumper](#)

[LST-1.3X6.5 /8.5, LST Single Pins](#)

**Notes**

Plated component: terminal body

ADD TO CART