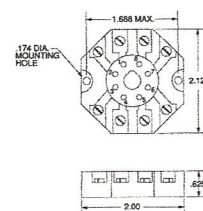
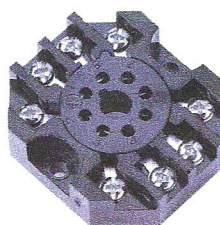


RELAY SOCKETS

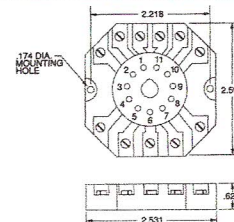
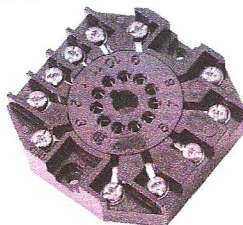
SURFACE MOUNTED—RB-08

Recommended for use with all 8 pin octal plug-in devices. UL Recognized and CSA Certified for 10 Amps @ 600 VAC. The molded thermoplastic base has brass, nickel plated inserts with #6-32 steel, nickel plated screws.



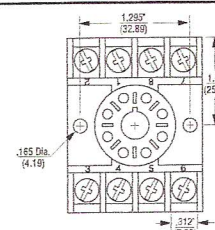
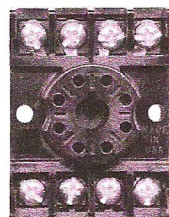
SURFACE MOUNTED—RB-11

Recommended for use with all 11-pin magnal plug-in devices. UL Recognized and CSA certified for 10 Amp @ 300 VAC. The molded thermoplastic base has brass, nickel plated inserts with #6-32 steel, nickel plated screws.



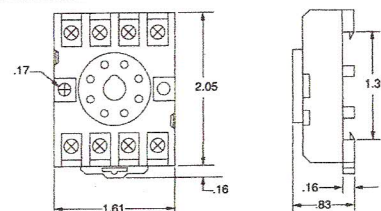
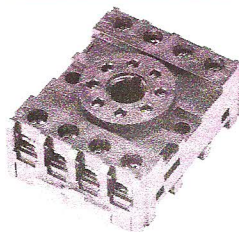
DIN RAIL/SURFACE MOUNTED—OT-08

DIN Rail mount. Recommended for use with all 8 pin octal plug-in devices. UL Recognized and CSA Certified for 10 Amps @ 600 VAC. The molded thermoplastic base has brass, nickel plated inserts with #6-32 nickel plated screws.



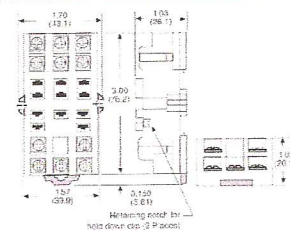
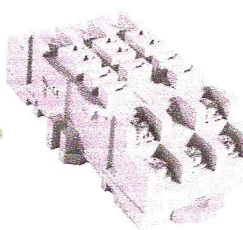
DIN RAIL/SURFACE MOUNTED—PF083A

Recommended for use with all 8 pin octal plug-in devices. UL Recognized and CSA Certified for 10 Amps @ 300 VAC. The molded polycarbonate base has brass, nickel plated inserts with #6-40 steel, nickel plated screws and captive self-lifting terminal clamps.



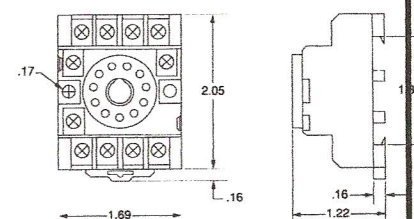
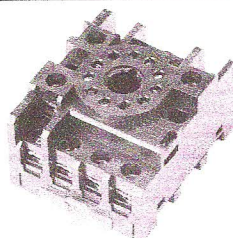
SURFACE MOUNTED—70-463-1

Recommended for use with all 0.187 blade 11 Pin Square base plug-in devices. UL Recognized and CSA Certified for 10 Amps @ 300 VAC. The molded thermoplastic base has brass, nickel plated inserts with #6-32 steel, nickel plated screws.



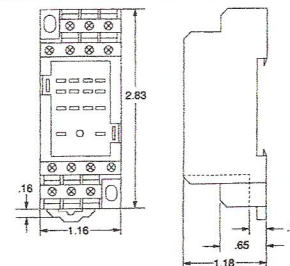
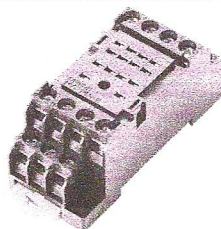
DIN RAIL/SURFACE MOUNTED—PF113A

Recommended for use with all 11 pin magnal plug-in devices. UL Recognized and CSA certified for 10 Amps @ 300 VAC. The molded polycarbonate base has brass, nickel plated inserts with #6-40 steel, nickel plated screws and captive self lifting terminal clamps.



DIN RAIL/SURFACE MOUNTED—PYF14A

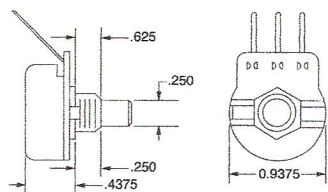
Recommended for use with all 14 pin multi-contact square base devices. UL Recognized and CSA Certified for 5 Amps @ 300 VAC. The molded polycarbonate base has brass, nickel plated inserts with #4-40 steel, nickel plated screws and captive self-lifting terminal clamps.



ACCESSORIES

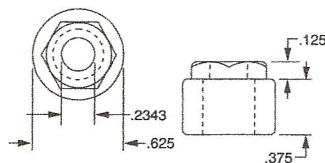
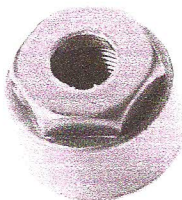
ADJUSTMENT—101-026-105

Recommended for use with all the ATC Diversified Electronics family of "remote adjustable" timers. Proper spacing is maintained for UL and CSA applications. This linear taper potentiometer has a non-conductive shaft attached to the internal conductive plastic wafer. The brass bushing is 3/8" x 32NEF and accepts adjustment hardware 100054070, 100054071



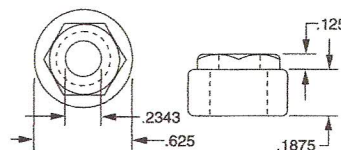
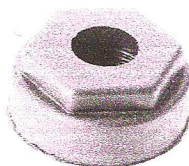
ADJUSTMENT HARDWARE LOCK NUT—100-054-070

Recommended for use with any adjustment or switch having a 3/8" x 32NEF bushing and 1/4" shaft. When the nut is tightened, the tapered center hole squeezes the shaft, preventing vibration mis-adjustment. Molded from black glass filled nylon with a UL 94V-0 rating.



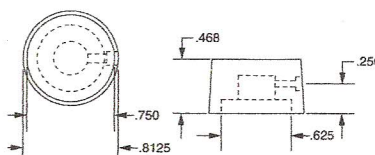
FLAT NUT—100-054-071

Recommended for use with any adjustment or switch having a 3/8" x 32NEF bushing and 1/4" shaft. Ideally suited for a 101026105 adjustment and 100054073 knob. This combination allows for no exposed metal parts required by UL and CSA. Molded from black, glass filled nylon with a UL 94V-0 rating.



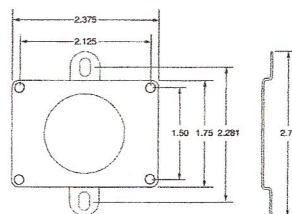
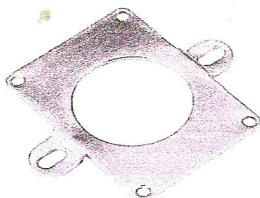
KNOB—100-054-073

Recommended for use with any adjustment or switch having a 1/4" shaft. This knob slips over the shaft and is secured in place by a #6-32 set screw. The knurled, mirror finished, black thermostat knob has a white pointer line for reference.



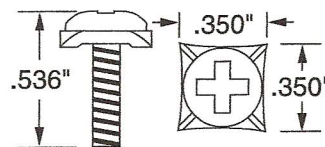
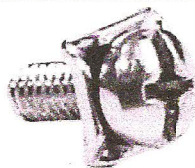
HOLD DOWN BRACKET—100-054-080

Recommended for use with ATC-Diversified Electronics devices having octal or magnal plug-in bases. Made of .040 steel with a yellow chromate coating. The bracket secures to the enclosure via four (4) corner screws and can be factory assembled to any device when ordered.



SADDLE CLAMP SCREW—100-054-226

The Saddle Clamp Screw can be used with all ATC-Diversified Electronics Style E surface mount enclosures.



SPRING CLIP—100-054-275

Spring Clip. Set of 2. Can only be used with the PF083A socket.

