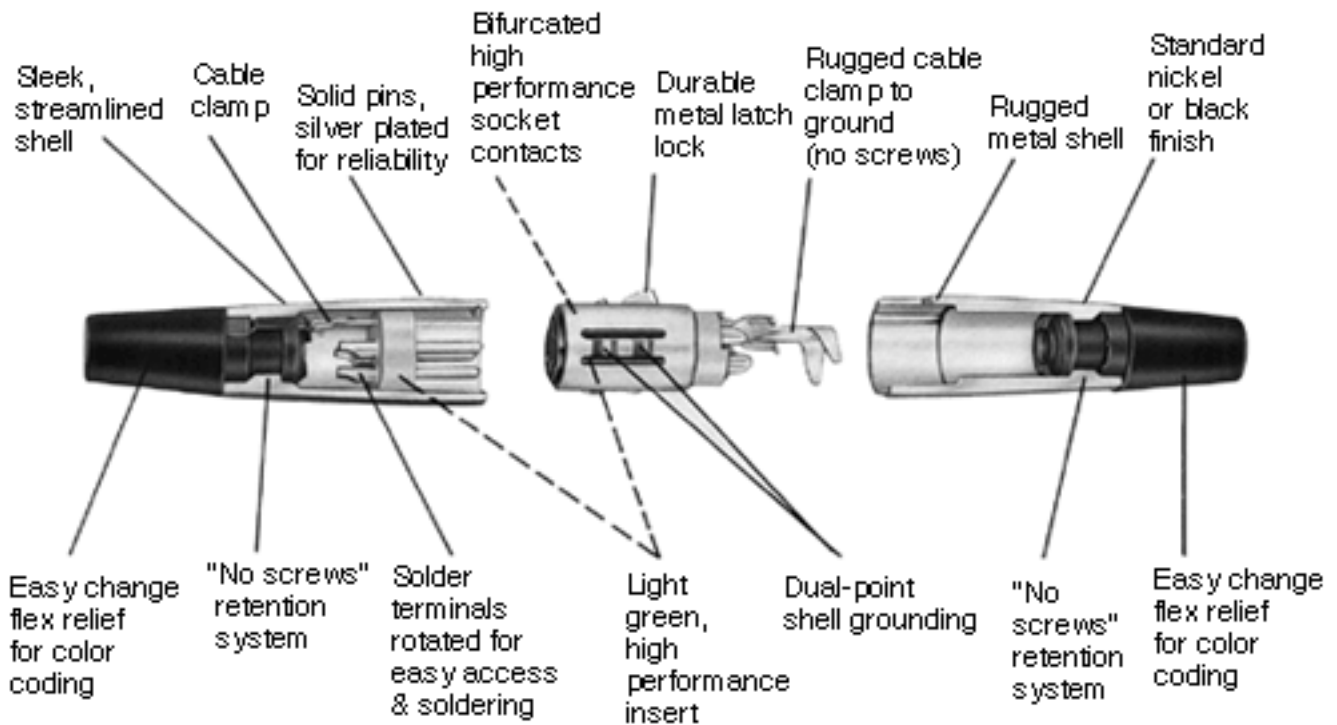


Switchcraft®

[Previous Page](#) | [Return to Index](#) | [Next Page](#)



Q-G® CONNECTORS

Q-G® AUDIO CONNECTORS A, AA, AND QGP SERIES

[click here to download a schematic drawing](#)

(you will need to have Adobe Acrobat installed on your system to do this)



QGP connectors (3 contacts only) feature Vel-Tone® non-reflective finish, gray TPR flex relief and plated pins/contacts for the most demanding applications.

Preferred by audio professionals the world over, Switchcraft® QG® connectors feature unsurpassed durability and a choice of finishes and contact platings. Features include:

- * High performance inserts in traditional Switchcraft® green or black.
- * Solder terminals rotated for easier access and soldering.
- * All metal housing.

AA Series Only

- * Rugged 1-piece cable clamp to relieve pulling and twisting stresses on terminations.
- * No Screws flex relief retention system.
- * Integral bump shell grounding system.

SPECIFICATIONS

ELECTRICAL

Contact Resistance: 50 milliohm maximum, per pole.

Current Rating: 3 pole - 15A, 4 pole - 10A, 5 and 6 pole - 7.5A, 7 pole - 5A @ 125VAC.

Insulation Resistance: 1,000 M(omega), minimum.

Dielectric Withstanding Voltage: 1,000 V (rms).

Capacitance: 2 pF between pins and 4 pF between pins and shell, maximum (AA3M and AA3F).

MECHANICAL

Insertion/Withdrawal Forces: 7 pound maximum, 5 pound nominal, insertion; 7 pound maximum, 5 pound nominal, withdrawal.

Wire Size: #12 wire gauge solid; #14 wire gauge stranded (3 contact). #14 wire gauge solid; #16 wire gauge stranded (4 contact). #16 wire gauge solid; #18 wire gauge stranded (5 and 6 contact). #18 wire gauge solid; #20 stranded (7 contact). (Q-G and QGP).

MATERIAL

Q-G Connectors (A and AA Series)

Shell: Die-cast zinc. Satin nickel finish, black velvet.

Insert Insulation: Molded thermoplastic.

Socket Contacts: Silver-plated copper alloy tarnish-resistant; bifurcated on 3-contact type. Gold is available

Pin Contacts: Silver-plated copper alloy. Resists tarnishing, and provide excellent electrical conductivity. Gold is available.

Latchlock: High-strength die-cast zinc.

Latch Release: Steel, nickel-plated.

Latch Detent: Formed stainless steel.

Insert Screw: Stainless steel.

Flex Relief: TPR (thermoplastic rubber).

QGP Connectors

Shell: Die-cast zinc, non-reflective gray Vel-Tone® finish.

Socket Contacts: Gold-plated copper alloy

Pin Contact: Gold-plated copper alloy

PART NUMBERS - FEMALE CORD PLUGS

Advanced Q-6#174; Cord Plugs, Series AA(*)F and AQGP						
AA3F	AA3FB	AA3FBAU	AA3FD	AA3FL	AQGP322	3
-	-	-	AA3FLD		-	3
AA4F	AA4FB	-	AA4FD	AA4FL	-	4
AA5F	AA5FB	-	AA5FD	AA5FL	-	5

AA6F	AA6FB	-	AA6FD	AA6FL	-	6
AA7F	AA7FB	-	AA7FD	AA7FL	-	7

Available on special order only; contact Switchcraft for price and delivery.

PART NUMBERS - MALE CORD PLUGS

Advanced Q-6#174; Cord Plugs, Series AA(*)M and AQGP					
AA3M	AA3MB	AA3MBAU	AA3ML	AQGP323	3
AA4M	-	-	AA4ML	-	4
AA5M	AA5MB	-	AA5ML	-	5
AA6M	-	-	AA6ML	-	6
AA7M	-	-	AA7ML	-	7

Available on special order only; contact Switchcraft for price and delivery.

All above part numbers have black flex relief installed. Contact Switchcraft for color flex relief.

[Previous Page](#) | [Return to Index](#) | [Next Page](#)

To search a category please click on the corresponding icon:



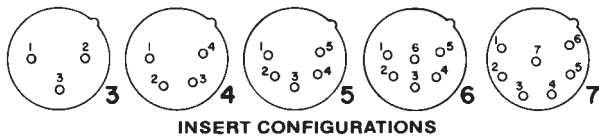
| [Connectors](#) | [Jacks and Plugs](#) |
| [Patch Panels, Patch Kits & Jackfields](#) | [Cable Assemblies and Patch Cords](#) | [Switches](#) |

All products shown are covered by Switchcraft's limited lifetime warranty.

| [Switchcraft home](#) |
[About Us](#) | [Products](#) | [What's New](#) | [Search](#) | [Contact Us](#)

Q-G® CORD PLUG CONNECTORS

FACE VIEW OF PIN (MALE) INSERTS



A(*)F CORD PLUG



Straight female cord plug with standard latchlock. Available in 3-7 pin versions.

A(*)FD CORD PLUG



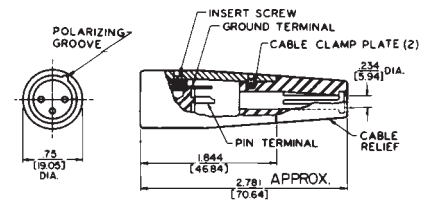
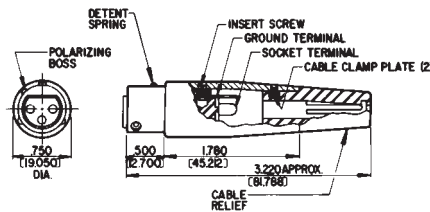
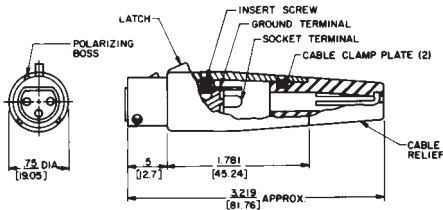
Straight female cord plug with FAS-DIS-CONNECT detent.

A(*)M CORD PLUG



Straight male cord plug.

*Number of insert contacts or pins must be specified to complete part number.



DIMENSIONS ARE FOR REFERENCE ONLY $\frac{\text{Inch}}{\text{(mm)}}$

NOTE: Contact your Switchcraft Representative for price and delivery.