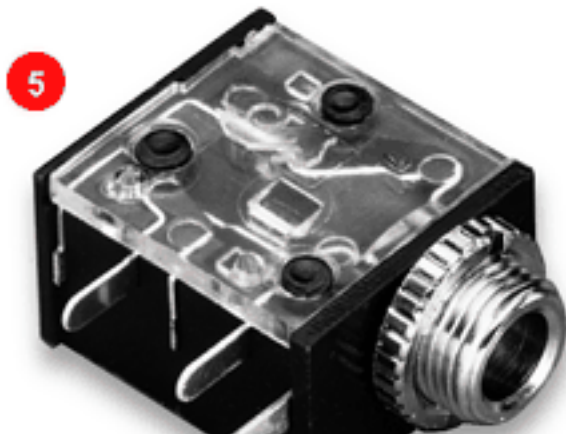
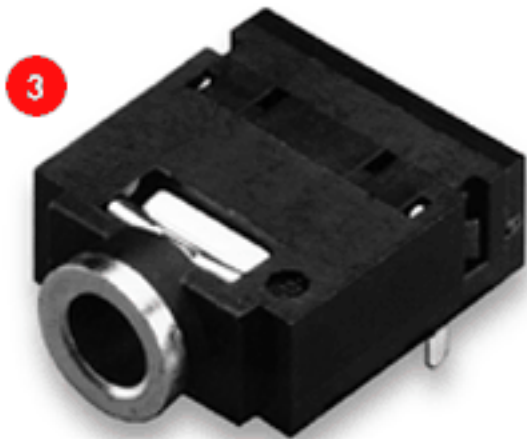
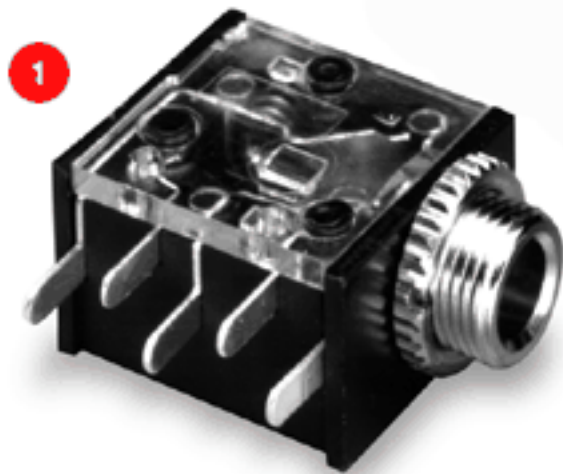


Switchcraft®

[Previous Page](#) | [Return to Index](#) | [Next Page](#)





3.5 mm SINGLE MONO AND STEREO JACKS

1. 35RAPC4BV4
2. 35RAPC2AV
3. 35RAPC2BHN2
4. 35RAPC4BH3
5. 35RAPC2BV4
6. 35RAPC2BH3

[click here to download a schematic drawing](#)

(you will need to have Adobe Acrobat installed on your system to do this)

[click here to download a schematic drawing](#)

(you will need to have Adobe Acrobat installed on your system to do this)

[click here to download a schematic drawing](#)

(you will need to have Adobe Acrobat installed on your system to do this)

[click here to download a schematic drawing](#)

(you will need to have Adobe Acrobat installed on your system to do this)



APPLICATIONS

- * Multi-media workstations
- * Headphones/microphone sets
- * Interactive TV
- * Audio
- * Telecommunications

* Medical

* Computer

* Instrumentation

SWITCHCRAFT 3.5 mm JACK PART NUMBERING SYSTEM					
Series	Mounting Type	Circuitry	Housing Orientation	Bushing	Footprint Designation
35 3.5 mm	RAPC Right-Angle	2A Single Closed	H (Horizontal) Board Space Required Greater Than Above Board Height (RAPC)	Blank Threaded Bushing	Blank See Note 1
	PM Panel Mount	2B Double Open	V (Vertical) Board Space Required Greater Than Above Board Height (RAPC)	N Non-threaded Bushing	2 See Note 1
		3B Single Open + Single Closed	V (Vertical) Solder Terminals Exit Housing Opposite From Bushing (PM)		3 See Note 1
		4B Double Closed	Blank Open Frame Jack		4 See Note 1
					5 See Note 1

Notes:

1. Footprints are assigned sequentially within a family of jacks.

For example, all 35RAPCXXV2 jacks can use the 35RAPC4BV2 footprint independent of whether the bushing is threaded.

Not all holes would be used by jacks with 2A, 2B, and 3B circuitry.

35RAPCXXV3 jacks require an entirely different PC board layout than 35RAPCXXV2 jacks.

Each number designates a different footprint.

ORDERING INFORMATION

Part Number	Description	Height vs. Width	Bushing
35RAPC2AV	mono	vertical	threaded3
35RAPC2AHN2	mono	horizontal	non-threaded
35RAPC2AHN3	mono	horizontal	non-threaded
35RAPC2BHN2	stereo	horizontal	non-threaded
35RAPC2BHN3	stereo	horizontal	non-threaded
35RAPC3BHN2	stereo	horizontal	non-threaded
35RAPC3BHN3	stereo	horizontal	non-threaded
35RAPC4BHN2	stereo	horizontal	non-threaded
35RAPC4BHN3	stereo	horizontal	non-threaded
35RAPC2AH3	mono	horizontal	threaded3
35RAPC2BH3	stereo	horizontal	threaded3
35RAPC3BH3	stereo	horizontal	threaded3
35RAPC4BH3	stereo	horizontal	threaded3
35RAPC2AV4	mono	vertical	threaded3
35RAPC2BV4	mono	vertical	threaded3
35RAPC3BV4	stereo	vertical	threaded3
35RAPC4BV4	stereo	vertical	threaded3
35RAPC2AVN4	mono	vertical	non-threaded
35RAPC2BVN4	stereo	vertical	non-threaded
35RAPC3BVN4	stereo	vertical	non-threaded
35RAPC4BVN4	stereo	vertical	non-threaded

Part numbers which include the letter "N" designate non-threaded bushings. Part numbers without the letter "N" designate threaded bushing.

1. Order by part number
2. Contact Switchcraft for special ordering information
3. Mounting hardware included.

35RAPC2AV - MONO, VERTICAL, THREADED

MATERIALS

Coil Spring: Steel wire.

Bushing: Nickel-plated copper alloy.

Terminal: Silver-plated copper alloy.

Tip Spring: Silver-plated copper alloy.

Shunt Terminal: Plated copper alloy.

Cover: Thermoplastic, transparent UL 94V-2.

Body: Thermoplastic, UL 94V-1 black color.

PERFORMANCE SPECIFICATIONS

Contact Resistance: 20 milliohms maximum.

Insulation Resistance: 100 milliohms minimum at 250V DC.

Dielectric Withstanding Voltage: 250V AC.

Life: 5000 cycles, minimum.

Insertion Force: 0.88 pounds - 3.5 pounds.

Withdrawal Force: 0.88 pounds - 2.64 pounds.

35RAPC4BHN2 - STEREO, HORIZONTAL, NON-THREADED

MATERIALS

Cover: Thermoplastic, UL 94V-1 black color.

Shunt Terminals: Silver-plated copper alloy.

Ring Spring: Copper alloy.

Tip Spring: Special silver plating.

Ground Terminal: Plated copper alloy.

Metal: Nickel-plated copper alloy.

Body: Thermoplastic, UL 94V-0 black color.

PERFORMANCE SPECIFICATIONS

Contact Resistance: 30 milliohms maximum, initial 100 milliohms maximum., after life.

Insulation Resistance: 100 megohms minimum at 500V DC.

Dielectric Withstanding Voltage: 500V AC.

Life: 5000 cycles, minimum.

Insertion Force: 0.88 pounds - 6.6 pounds.

Withdrawal Force: 0.88 pounds - 6.6 pounds.

35RAPC2BHN2 - STEREO, HORIZONTAL, NON-THREADED

MATERIALS

Cover: Thermoplastic, UL 94V-1 black color.

Ring Spring: Copper alloy.

Tip Spring: Silver-plated copper alloy.

Ground Terminal: Silver-plated copper alloy.

Metal: Copper alloy, nickel plating.

Body: Thermoplastic, UL 94V-0 black color.

PERFORMANCE SPECIFICATIONS

Contact Resistance: 30 milliohms maximum, initial
100 milliohms maximum, after life.

Insulation Resistance: 100 megohms minimum
at 500V DC.

Dielectric Withstanding Voltage: 500V AC.

Life: 5000 cycles, minimum.

Insertion Force: 0.88 pounds - 6.6 pounds.

Withdrawal Force: 0.88 pounds - 6.6 pounds.

35RAPC2BH3 - STEREO, HORIZONTAL, THREADED

MATERIALS

Coil Springs: Steel wire.

Tip Spring: Silver-plated copper alloy.

Ring Spring: Silver-plated copper alloy.

Ground Terminal: Silver-plated copper alloy.

Bushing: Nickel-plated copper alloy.

Cover: Thermoplastic, transparent UL 94V-2.

Body: Thermoplastic, UL 94V-1 black color.

PERFORMANCE SPECIFICATIONS

Contact Resistance: 20 milliohms maximum, initial
100 milliohms maximum, after life.

Insulation Resistance: 100 megohms minimum.

Dielectric Withstanding Voltage: 250V AC.

Life: 5000 cycles, minimum.

Insertion Force: 0.88 lbs. - 3.50 lbs.

Withdrawal Force: 0.88 lbs. - 3.10 lbs.

35RAPC4BH3 - STEREO, HORIZONTAL, THREADED

MATERIALS

Coil Springs: Steel wire.

Tip Spring: Silver-plated copper alloy.

Ring Spring: Silver-plated copper alloy.

Contactors: Silver-plated copper alloy.

Ground Terminal: Silver-plated copper alloy.

Bushing: Nickel-plated copper alloy.

Cover: Thermoplastic, transparent UL 94V-2.

Body: Thermoplastic, UL 94V-1 black color.

PERFORMANCE SPECIFICATIONS

Contact Resistance: 20 milliohms maximum, initial
100 milliohms maximum, after life.

Insulation Resistance: 100 megohms minimum.

Dielectric Withstanding Voltage: 250V AC.

Life: 5000 cycles, minimum.

Insertion Force: 0.88 - 3.5 pounds.

Withdrawal Force: 0.88 - 3.1 pounds.

35RAPC2BV4 - STEREO, VERTICAL, THREADED

MATERIALS

Coil Springs: Steel Wire.

Ring Spring: Copper alloy strip, tin alloy plating.

Ground Terminal: Copper alloy strip, tin alloy plating.

Bushing: Nickel-plated copper alloy.

Cover: Thermoplastic, UL 94V-0 black color.

Body: Thermoplastic, UL 94V-0 black color.

PERFORMANCE SPECIFICATIONS

Contact Resistance: 20 milliohms maximum,
initial 50 milliohms maximum, after life.

Insulation Resistance: 50 megohms minimum at 500V DC.

Dielectric Withstanding Voltage: 250V AC.

Life: 5,000 cycles, minimum.

Insertion Force: 0.88 lbs. to 3.50 lbs.

Withdrawal Force: 0.88 lbs. to 3.10 lbs.

35RAPC4BV4 - STEREO, VERTICAL, THREADED

MATERIALS

Coil Springs: Steel wire.

Shunt Terminals: Copper alloy strip, tin alloy plated.

Ring Spring: Copper alloy strip, tin alloy plated.

Ground Terminal: Copper alloy strip, tin alloy plated.

Bushing: Plated copper alloy.

Cover: Thermoplastic, UL 94V-0 black color.

Body: Thermoplastic, UL 94V-0 black color.

PERFORMANCE SPECIFICATIONS

Contact Resistance: 20 milliohms maximum, initial
50 milliohms maximum, after life.

Insulation Resistance: 50 milliohms minimum at 500V DC.

Dielectric Withstanding Voltage: 250V AC.

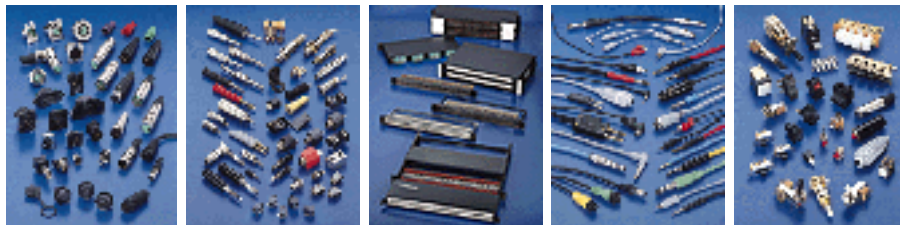
Life: 5000 cycles, minimum.

Insertion Force: 0.88 - 3.5 pounds.

Withdrawal Force: 0.88 - 3.5 pounds.

[Previous Page](#) | [Return to Index](#) | [Next Page](#)

To search a category please click on the corresponding icon:



| [Connectors](#) | [Jacks and Plugs](#) |
| [Patch Panels, Patch Kits & Jackfields](#) | [Cable Assemblies and Patch Cords](#) | [Switches](#) |

All products shown are covered by Switchcraft's limited lifetime warranty.

3.5 mm SINGLE MONO AND STEREO JACKS

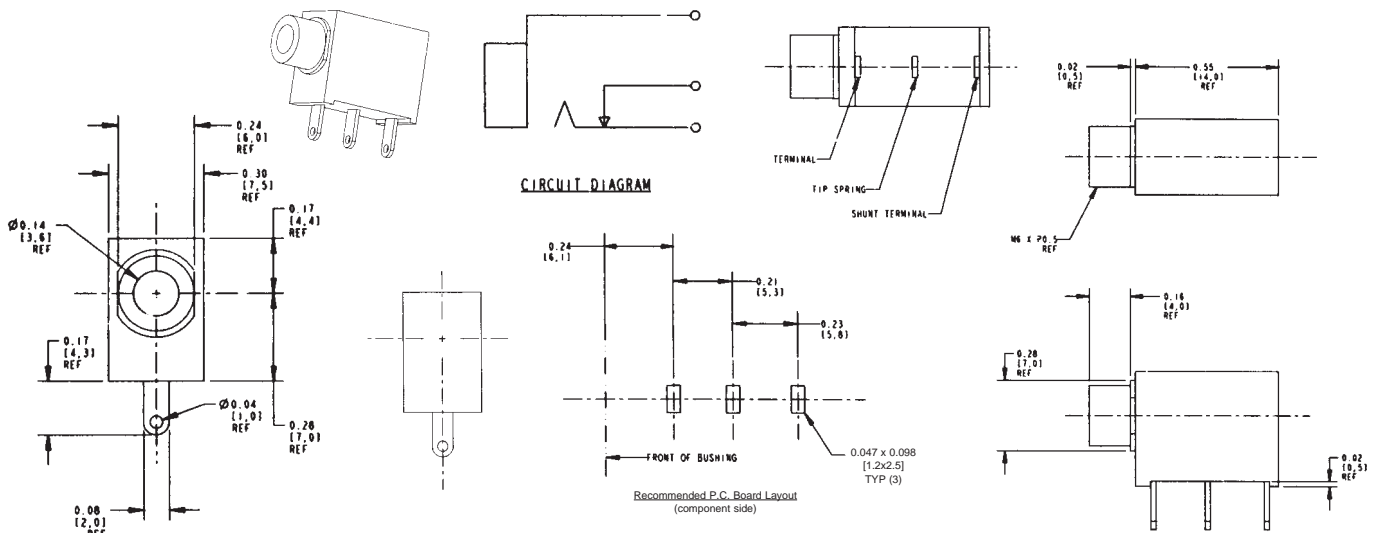
35RAPC2AV – MONO, VERTICAL, THREADED

MATERIALS

Coil Spring: Steel wire.
Bushing: Nickel-plated copper alloy.
Terminal: Silver-plated copper alloy.
Tip Spring: Silver-plated copper alloy.
Shunt Terminal: Plated copper alloy.
Cover: Thermoplastic, transparent UL 94V-2.
Body: Thermoplastic, UL 94V-1 black color.

PERFORMANCE SPECIFICATIONS

Contact Resistance: 20 milliohms maximum.
Insulation Resistance: 100 milliohms minimum at 250V DC.
Dielectric Withstanding Voltage: 250V AC.
Life: 5000 cycles, minimum.
Insertion Force: 0.88 pounds - 3.5 pounds.
Withdrawal Force: 0.88 pounds - 2.64 pounds.



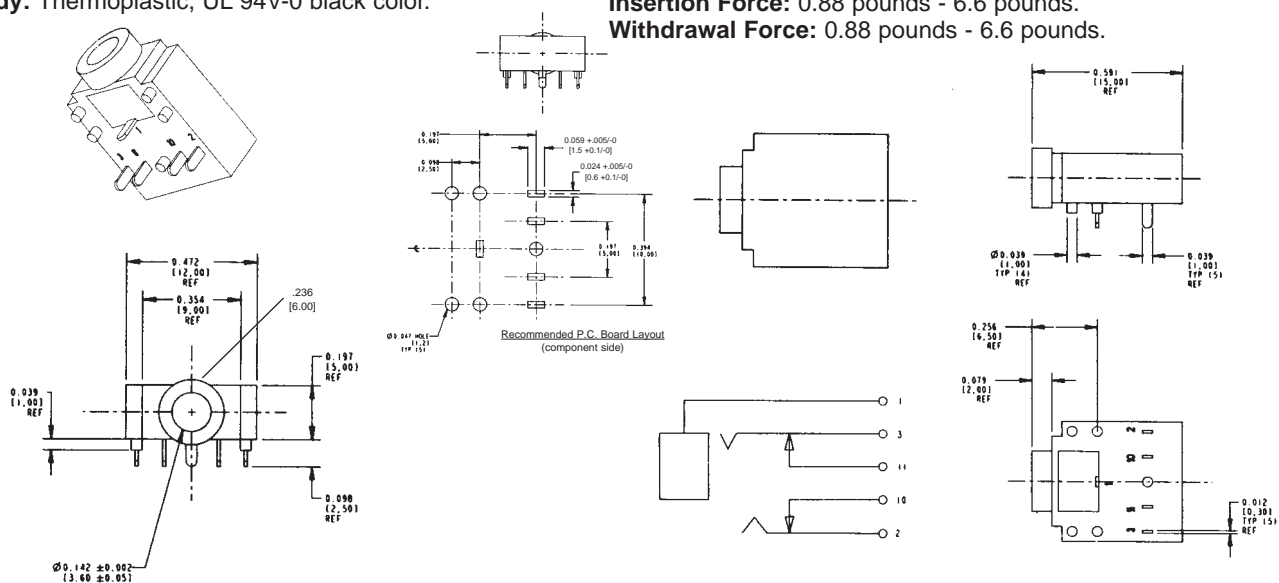
35RAPC4BHN2 – STEREO, HORIZONTAL, NON-THREADED

MATERIALS

Cover: Thermoplastic, UL 94V-1 black color.
Shunt Terminals: Silver-plated copper alloy.
Ring Spring: Copper alloy.
Tip Spring: Special silver plating.
Ground Terminal: Plated copper alloy.
Metal: Nickel-plated copper alloy.
Body: Thermoplastic, UL 94V-0 black color.

PERFORMANCE SPECIFICATIONS

Contact Resistance: 30 milliohms maximum, initial
100 milliohms maximum., after life.
Insulation Resistance: 100 megohms minimum at
500V DC.
Dielectric Withstanding Voltage: 500V AC.
Life: 5000 cycles, minimum.
Insertion Force: 0.88 pounds - 6.6 pounds.
Withdrawal Force: 0.88 pounds - 6.6 pounds.



DIMENSIONS ARE FOR REFERENCE ONLY $\frac{\text{Inch}}{\text{mm}}$

NOTE: Contact your Switchcraft Representative for price and delivery.