



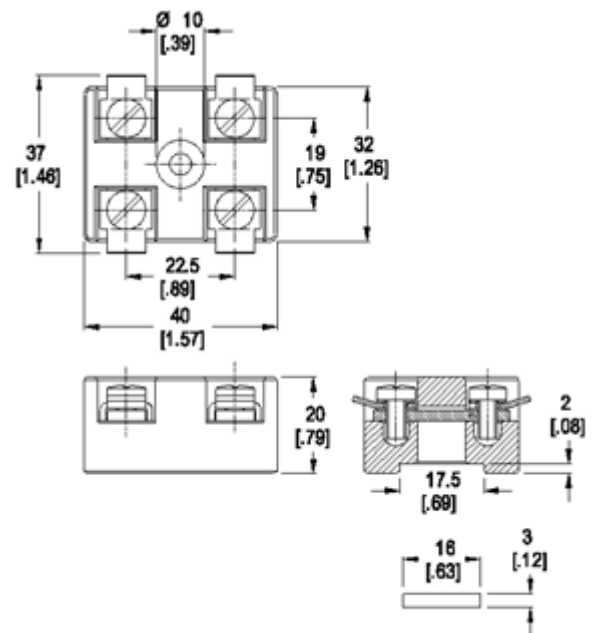
Ceramic Terminal Blocks

TYPE 560-K4DF-V2A

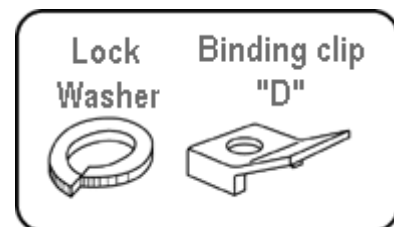
22.5 mm spacing - 2 poles

[Inventory Check](#)

Series	Download PDF	3D Model	Can plug with	How to order	Print
--------	--------------	----------	---------------	--------------	-------



Dimensions: mm (in.)



Hardware Options (1) Lock Washer (2) Binding clip "D"

When locating connector, allow 0.5 mm clearance around it for process-induced variations.

Description

Series 560 ceramic terminal blocks offer a variety of models for explosion-proof and high temperatures applications. The 560-K4DF-V2A is supplied with all stainless steel metal components and is able to resist up to 500°C (932°F).

These terminals comprise of a glazed steatite mount and two riveted flat-type screw terminals secured to prevent them from twisting, similar to DIN 41000, with biding clip C or D and spring washers B DIN 127. The blocks may either be used rail mounted or independently. The base has a longitudinal slot at the bottom for non-twist securing on mounting rails 16 mm x 3 mm (0.63 x 0.12 in.). The surfaces next to the screw-fixing hole can be used for marking purposes.

A 17 mm wide by 2 mm high slot has been molded into the base of each terminal block. This slot can accommodate a suitably shaped rail on the mounting surface to allow securing the block and preventing possible movement caused during the tightening of the screw during the wiring operation.

A variety of other hardware components are available to meet other wiring needs.

Recommended mounting hardware: M4 pan head screw (#8-32 pan head screw).

- Ceramic Terminal Block for high temperature applications
- With Clamping Screws

Approval Information

UL File No.E69841

CSA File No.LR24322



- With Binding Clip "D"
- With Lock Washers

Rating	Current(A)	Voltage(V)	Application group	AWG
UL	20	300		20-12
CSA	25	600		20-12

Technical Data

Center to Center Spacing: 22.5 mm (0.886 in.)

Nominal Cross Section:

2.5 mm² (3874 mils²)

Wire Stripping Length: 8 mm (0.31 in.)

Screw Tightening Torque:

10

International Approvals:



▲
Top of page

Material

Molding: Steatite KER 220, DIN 40685, color white

Temperature upper limit: 500°C (932°F)

Terminal Body: Stainless steel

Screw: M4, Stainless steel

Lock Washer: Stainless steel

Binding Clip: Stainless steel

How to order

Item 560-K4DF-V2A

Options

G05: Gold Plating (5 micro inches)

G30: Gold Plating (30 micro inches)

S30: Silver Plating (30 micro inches)

Ordering Note: Plated component: terminal body

560-K4DF-V2A-

[Request sample](#)

[Request quote](#)

Quantity

Accessories

[Add to shopping cart](#)

E

Ceramic Terminal Block for high temperature applications

Series 560

Type 560-K4DF-V2A

22.5 mm • 2 poles

Lock washer

Binding Clip D

RoHS
WEEE

Dimensions: mm (in.) When locating connector, allow 0.5 mm clearance around it for process-induced variations.
Length of Connector (L) L = No. of Poles x Center to Center Spacing + 10 mm

DESCRIPTION

Series 560 ceramic terminal blocks offer a variety of models for explosion-proof or high temperature applications. The 560-K4DF-V2A is supplied with stainless steel components and can be used at temperatures up to 500°C (932°F).

A 17 mm wide by 2 mm high slot has been molded into the base of each terminal block. This slot can accommodate a suitably shaped rail on the mounting surface to allow securing the block and preventing possible movement caused during the tightening of the screw during the wiring operation.

A variety of other hardware components are available to meet other wiring needs.

• **Recommended mounting hardware:** M4 pan head screw (#8-32 pan head screw).

TECHNICAL DATA

Center to Center Spacing: 22.5 mm (0.886 in.) **Wire Stripping length:** 8 mm (0.31 in.)
Nominal Cross Section: 2.5 mm² (3874 mils²)

APPROVAL INFORMATION

File No.:	Rating	Current (A)	Voltage (V)	AWG	Screw Tightening Torque
UL File No.: E69841	UL	20	300	20-12	max. 10 lbf.in.
CSA File No.: LR24322	CSA	25	300	20-12	max. 1.2 Nm

International Approvals:

MATERIAL

MOLDING: Steatite, KER 220 DIN 40685, white
TEMPERATURE LIMITS: Upper Temperature Limit: 500°C (932°F)
Terminal Body: stainless steel
Screw: stainless steel, M4
Lock Washer: stainless steel
Binding Clip: stainless steel

ACCESSORIES

• Mounting Rail, Type I-16.

OPTIONS See How to Order. If more than one option is required, please separate each option with a dash (-).

G05: Gold Plating (5 micro inches)

G30: Gold Plating (30 micro inches)

S30: Silver Plating (30 micro inches)

Note: Plated component: terminal body

HOW TO ORDER

OPTIONS:
G05, G30, S30

560-K4DF-V2A-

Ceramic Motor Terminal Block

Series 71

Type 714

23 mm • 6 poles

L = 64.0 (2.52)
W = 40.0 (1.57)
H = 31.0 (1.22)
A = 23.0 (0.91)
B = M5
C = 7.0 (0.28)

Dimensions: mm (in.) When locating connector, allow 0.5 mm clearance around it for process-induced variations.
Length of Connector (L) L = No. of Poles x Center to Center Spacing + 10 mm

DESCRIPTION

Series 71 steatite motor terminal boards have two recessed mounting holes; they feature separating walls molded between each clamping bolt to help prevent unwanted contact between adjacent connections. They are supplied with plain washers and brass nuts.

• **Recommended mounting hardware:** M6 pan head screw (1/4-20 fillister head screw).

TECHNICAL DATA

Center to Center Spacing: 23 mm (0.91 in.)
Nominal Cross Section: 2 x 2.5 mm² (2 x 3874 mils²)
Recommended operating current voltage and wire range:

Voltage (V)	Current (A)	AWG
500	25	14

(maximum load at 40°C (104°F) ambient temperature)

MATERIAL

MOLDING: Steatite KER 220, DIN 40685, white
TEMPERATURE LIMITS: Upper Temperature Limit: 240°C (464°F)
Threaded Post: blank brass, M5
Nut: blank brass
Washer: yellow chromate passivated, zinc plated steel.

ACCESSORIES

• Jumpers, Series 75.

HOW TO ORDER

714

www.weco.ca/products/560-K4DF-V2A

www.weco.ca/products/714

58

U.S.A. tel (518) 298-4810 fax: (518) 298-5938 CANADA tel: (514) 694-9136 fax: (514) 694-0956 BRAZIL tel: (55) 41.3018.3530 fax: (55) 41.3018.3530 WWW.WECO.CA