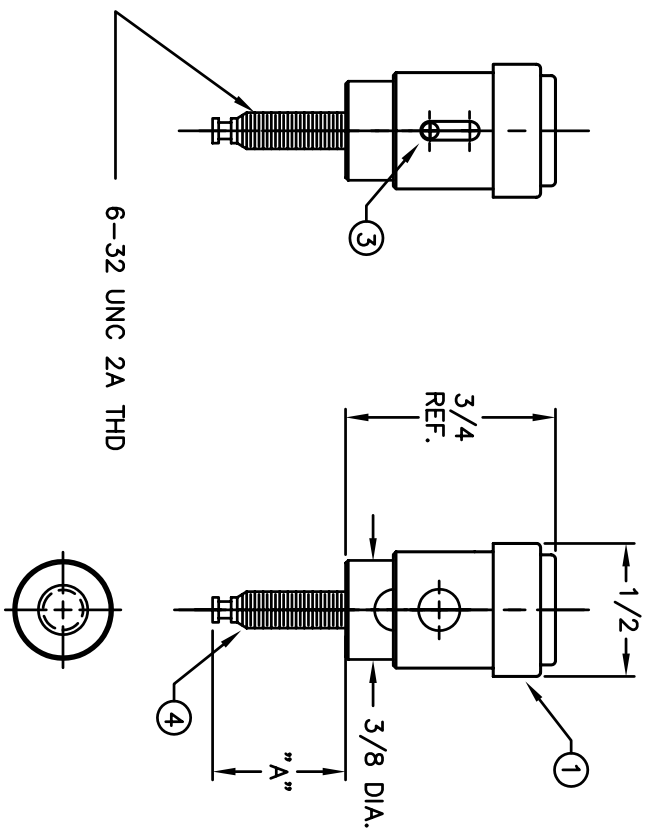


REVISIONS		REVISED	DATE	APPR
SYM	DESCRIPTION			

BILL OF MATERIALS				
DET.	QTY.	DESCRIPTION	MATERIAL	FINISH
1	1	SHELL/CAP SUB-ASSY	BRASS/NYLON	NICKEL
2	1	SPRING	HARD DRAWN SPRING WIRE	ZINC
3	1	CROSS PIN	STEEL	ZINC
4	1	BDG POST BODY	1/2H 360 BRASS	NICKEL



BINDING POST ASSEMBLY			
PART NO.	FINISH	A	
2802-102	RED	3/8	
2802-103	BLACK	3/8	
2803-102	RED	1/2	
2803-103	BLACK	1/2	
2804-102	RED	3/4	
2804-103	BLACK	3/4	

MATERIAL:	SEE TABLE	FINISH:	SEE TABLE	TITLE:		DATE:		DATE:		SIZE	DRAWING NUMBER	ISSUE
DIMENSIONAL TOLERANCES				280x-10x SERIES		12/30/02		12/30/02		B	SD: SMP-00041	D
UNLESS OTHERWISE SPECIFIED				SPRING LOADED BINDING POST ASSY.		12/30/02		12/30/02				
XX	XXX	XXX	XXXX									
FRACTIONS				SCALE		2X						
ANGLES				SCALE		2X						
HEAT TREAT:				DRAWN:		T. LORD		DATE:		12/30/02		
PLOT SCALE:				CHECKED:		T. LORD		DATE:		12/30/02		
				APPROVED:		T. LORD		DATE:		12/30/02		

ABBATRON
 Electronic Connectors and Hardware
 632 Arch Street, Meadville, Pa. 16335