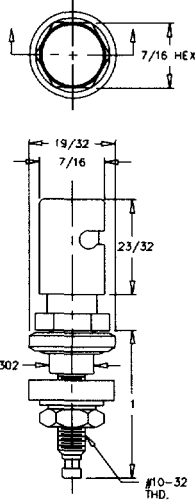
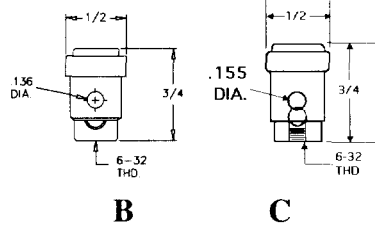


# SPRING LOADED BINDING POSTS

BINDING POSTS

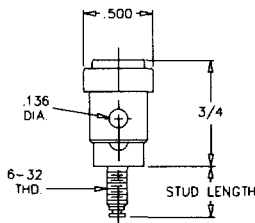
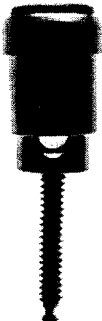


**A 1837**

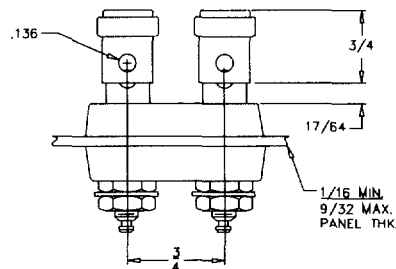
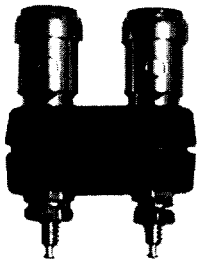


**B**

**C**



**D**



**E**

## 1837

- ◆ ML-P-55149/8 Commercial Version, this heavy duty, waterproof post is meant for rugged applications.
- ◆ Body is nickel plated brass.
- ◆ Insulated washers are molded nylon. Cap is silicon rubber, as are "O" ring waterproof seals for panel.
- ◆ Body mounts into 5/16" hole in panel from 1/16" to 1/8" thick.
- ◆ Spring loaded push cap tightly grips wire in side slot.
- ◆ To connect circuit, wrap wire around solder turret or attach to solder lug between nuts. (Lug not supplied.)
- ◆ Please refer to Table A (page 26) for post rating information.
- ◆ Available in red (-102, MIL Spec Type PB 08NA02,) or black (-103, MIL Spec Type PB 08NA01.)

PART NO.	FIG.	MNTG HOLE	POST THREAD	STUD LENGTH	PLATING
1837-2802	A	5/16	10-32	3/8	Nickel
2803	B	#6	6-32	1/2	
2804				3/4	
2809	C			6-32 THD	
2810	D				Nickel
2713BB	E	1/2	8-32	1/16 MIN	Nickel
2713RB				9/32 MAX	
2713RR				PANEL THKNS.	

- ◆ Quick and secure wire connection is assured with these spring loaded binding posts.
- ◆ Heads and bodies are brass with plated finish as indicated above. Insulated caps on heads are available in red (-102) or black (-103) or for the dual posts, a combination (RR, RB, BB.) Please add color as suffix to part number.
- ◆ Posts mount into #6 holes, dual posts require standard 3/4" centers.
- ◆ Use with phone tip plug up to 1/8" diameter, or connect to wire up to #12 AWG.
- ◆ To connect circuit, wrap wire around solder turret or attach to solder lug between nuts. (Lug not supplied.)
- ◆ Please refer to Table A (page 26) for post rating information.

