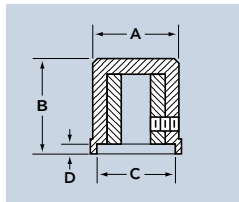




3008



3440



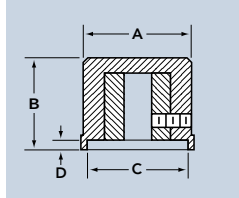
Part Number				NUT CLEARANCE		TO COMPLETE PART NUMBER	
Without Line	With Line	A Diam.	B Height	C Diam.	D Depth	Shaft Hole	Color
3008	3440	.500	.625	.430	.070	1	B
						2	S
						3	G
						4	J



3488



3489



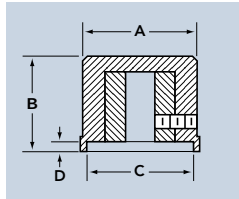
Part Number				NUT CLEARANCE		TO COMPLETE PART NUMBER	
Without Line	With Line	A Diam.	B Height	C Diam.	D Depth	Shaft Hole	Color
3488	3489	.720	.620	.625	.030	1	B
						2	S
						3	G
						4	J



3009



3441



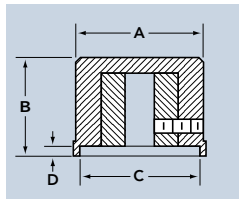
Part Number				NUT CLEARANCE		TO COMPLETE PART NUMBER	
Without Line	With Line	A Diam.	B Height	C Diam.	D Depth	Shaft Hole	Color
3009	3441	.850	.600	.680	.125	1	B
						2	S
						3	G
						4	J



3010



3442



Part Number				NUT CLEARANCE		TO COMPLETE PART NUMBER	
Without Line	With Line	A Diam.	B Height	C Diam.	D Depth	Shaft Hole	Color
3010	3442	.975	.750	.810	.225	1	B
						2	S
						3	G
						4	J

## FINE KNURL

This series of knobs is characterized by a fine knurl that is both stylish as well as functional. This handsome knob provides a superior gripping surface for smoother control while turning.



## CUSTOM TOPS

The 3000 series is available with a variety of pad printed and hot stamped tops. Below are some samples of frequently requested custom tops.



### ORDERING GUIDE FOR 3000 SERIES

Style	Shaft Hole	Color
Indicate Part Number from Tables Above	1- 1/8" Round 2- 1/4" Round 3- 3/8" "D" hole 4- 1/2" "D" hole	B- Matte Black S- Gloss Black G- Matte Gray J- Gloss Gray

All 3000 Series knobs come standard with 2 set screws.

EXAMPLE: 3010-2-B

Style	Shaft Hole	Color
Plain Top	.250"	Matte Black
3010-	2	B