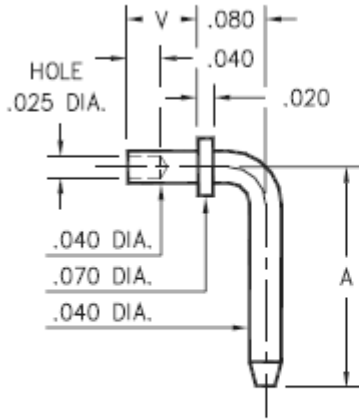


Product Number: 3301-2-14-21-00-00-08-0



330X-X-14-XX-00-00-08-0
Specify board thickness
Swage mount in .043 hole

| Basic Part Number | Pin Centers A |
|-------------------|---------------|
| 3301-X | .257 |
| 3302-X | .357 |
| 3303-X | .375 |
| 3304-X | .562 |

| - X - | Board Thickness | Length V |
|-------|-----------------|----------|
| 1 | .031 | .051 |
| 2 | .062 | .082 |
| 3 | .094 | .113 |

Description:

3301 - Swage Terminal Pin

Packaging:

Packaged in Bulk

| Mill-Max Part Number | Shell Plating | Contact Plating | RoHS Compliant |
|-------------------------|------------------------|-----------------|---|
| 3301-2-14-21-00-00-08-0 | 20 μ" Gold over Nickel | 00 |  |

SHELL MATERIAL:

BRASS ALLOY (UNS C36000) per ASTM B 16

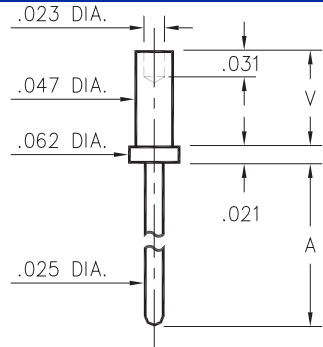
Properties of BRASS ALLOY:

- Chemical composition: Cu 61.5%, Zn 35.4%, Pb 3.1%†
- Hardness as machined: 80-90 Rockwell B
- Density: .307 lbs/in³
- Electrical conductivity: 26% IACS*
- Melting point: 900°C/885°C (liquidus/solidus)

†(3 to 4% lead is used to permit "free machining" and is permitted by EC Directive 2002/95Annex 6; so all pin materials are RoHS compliant)

*International Annealed Copper Standard, i.e. as a % of pure copper.

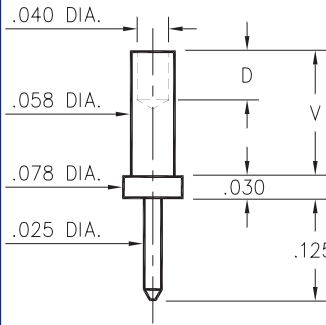
3130/3134/3151



| Basic Part Number | Board Thickness | Length A | Length V |
|-------------------|-----------------|----------|----------|
| 3134-1 | .031 | .079 | .051 |
| 3134-2 | .062 | .079 | .082 |
| 3134-3 | .094 | .079 | .113 |
| 3134-4 | .125 | .079 | .145 |
| 3130-1 | .031 | .179 | .051 |
| 3130-2 | .062 | .179 | .082 |
| 3130-3 | .094 | .179 | .113 |
| 3130-4 | .125 | .179 | .145 |
| 3151-1 | .031 | .479 | .051 |
| 3151-2 | .062 | .479 | .082 |
| 3151-3 | .094 | .479 | .113 |
| 3151-4 | .125 | .479 | .145 |

31XX-X-00-XX-00-00-08-0
Swage mount in .052 hole

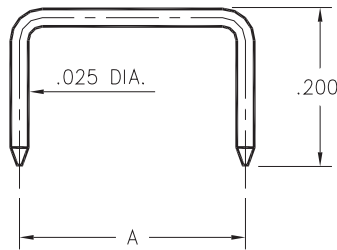
3113



| Basic Part Number | Board Thickness | Length V | Depth D |
|-------------------|-----------------|----------|---------|
| 3113-1 | .031 | .062 | .040 |
| 3113-2 | .062 | .094 | .062 |
| 3113-3 | .094 | .125 | .062 |
| 3113-4 | .125 | .156 | .062 |

3113-X-00-XX-00-00-08-0
Swage mount in .062 hole

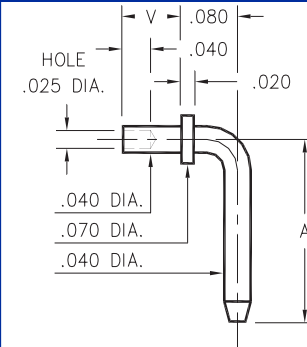
3360



| Basic Part Number | Pin Centers A |
|-------------------|---------------|
| 3360-1 | .200 |
| 3360-2 | .250 |
| 3360-3 | .300 |
| 3360-4 | .400 |
| 3360-5 | .500 |

3360-X-14-XX-00-00-08-0
Shorting Jumper

3301 ⇒ 3304

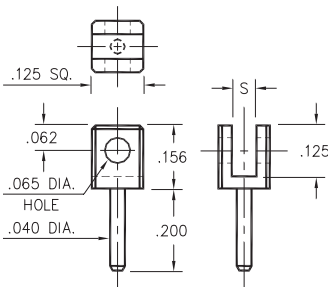


| Basic Part Number | Pin Centers A |
|-------------------|---------------|
| 3301-X | .257 |
| 3302-X | .357 |
| 3303-X | .375 |
| 3304-X | .562 |

| - X - | Board Thickness | Length V |
|-------|-----------------|----------|
| 1 | .031 | .051 |
| 2 | .062 | .082 |
| 3 | .094 | .113 |

330X-X-14-XX-00-00-08-0
Specify board thickness
Swage mount in .043 hole

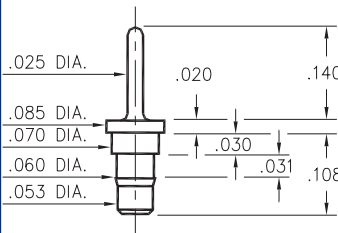
3620



| Basic Part Number | Board Thickness | Slot S |
|-------------------|-----------------|--------|
| 3620-1 | .031 | .047 |
| 3620-2 | .062 | .075 |

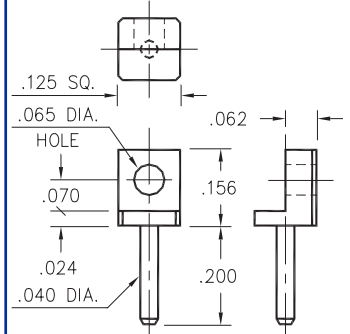
3620-X-32-XX-00-00-08-0
Board edge rivet mount

0940



0940-0-00-XX-00-00-03-0
Press-fit in .057 mounting hole

3621



3621-0-32-XX-00-00-08-0
Board edge rivet mount

SPECIFICATIONS

PIN MATERIAL:
Brass Alloy 360, 1/2 Hard
(Except Swage pins which are annealed)

DIMENSION IN INCHES
TOLERANCES ON:
LENGTHS: ±.005
DIAMETERS: ±.002
ANGLES: ± 2°

ORDER CODE: XXXX - X - XX - XX - 00 - 00 - 0X - 0

BASIC PART #

SPECIFY PIN FINISH:
01 200µ" TIN/LEAD OVER NICKEL
80 200µ" TIN OVER NICKEL
15 10µ" GOLD OVER NICKEL
21 20µ" GOLD OVER NICKEL
34 50µ" GOLD OVER NICKEL

