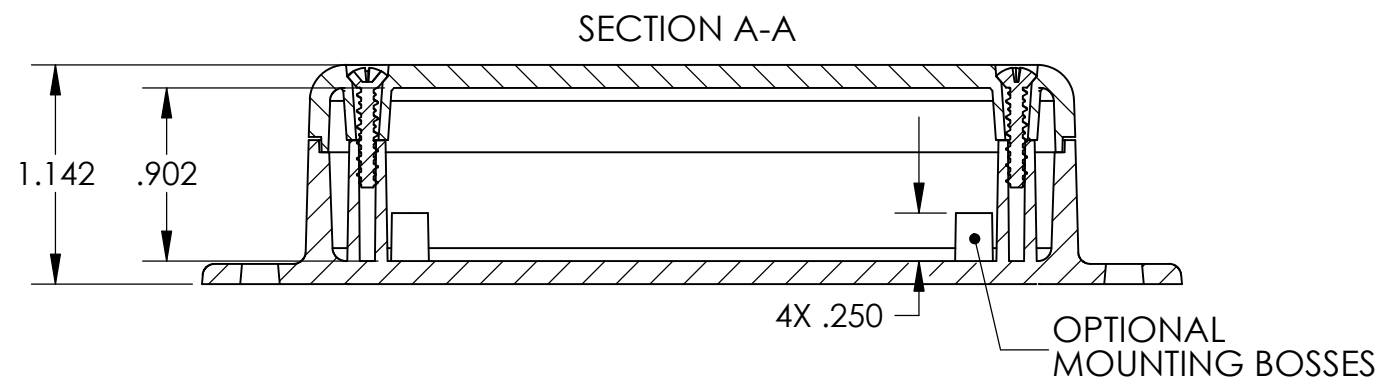
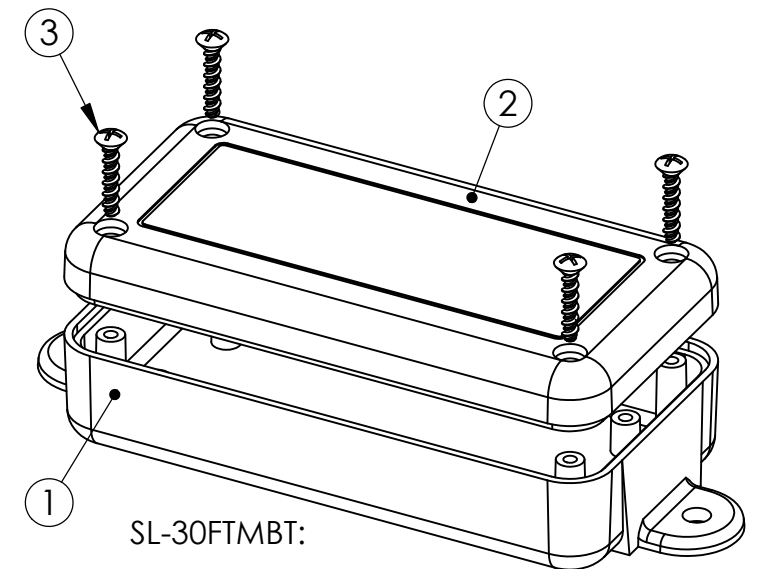
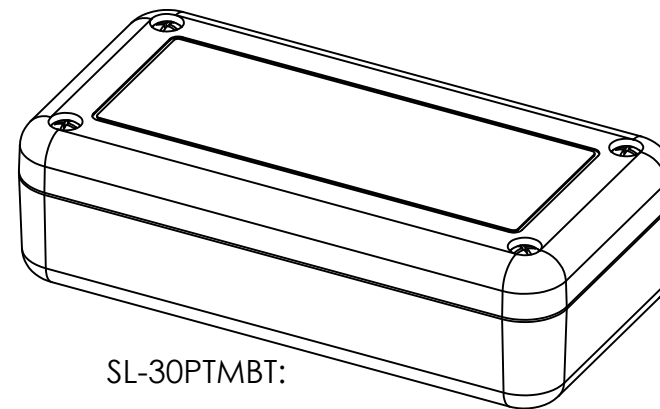


ITEM NO.	PART NUMBER	DESCRIPTION	QTY.
1	SL-30B	BASE	1
2	SL-30C	COVER	1
3	SCREWS-HL5/8-B	ASS'Y SCREWS	4

ENCLOSURE OPTIONS	
CODE	DESCRIPTION
OMIT	COLOR: BLACK
*01	COLOR: GRAY
*03	COLOR: BONE
T	COVER: TEXTURED FLUSH
R	COVER: RECESSED SMOOTH
MB	BASE: WITH MOUNTING BOSSES
XX	BASE: WITHOUT MOUNTING BOSSES
T	BASE: TEXTURED FLUSH
R	BASE: RECESSED SMOOTH
P	BASE: PLAIN, WITHOUT MOUNTING FLANGES
F	BASE: WITH MOUNTING FLANGES



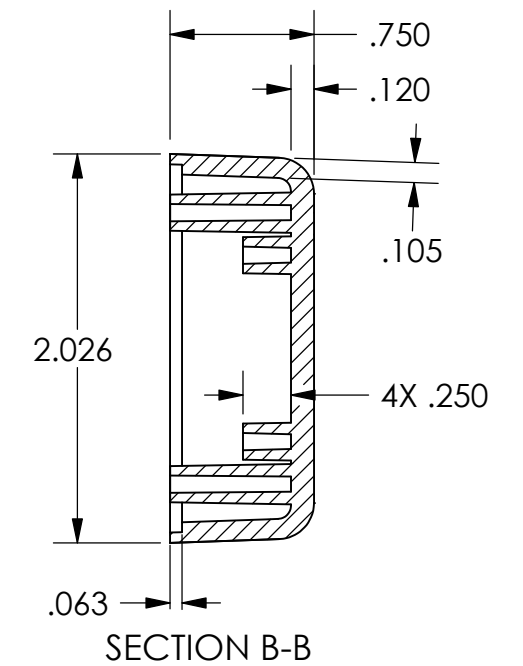
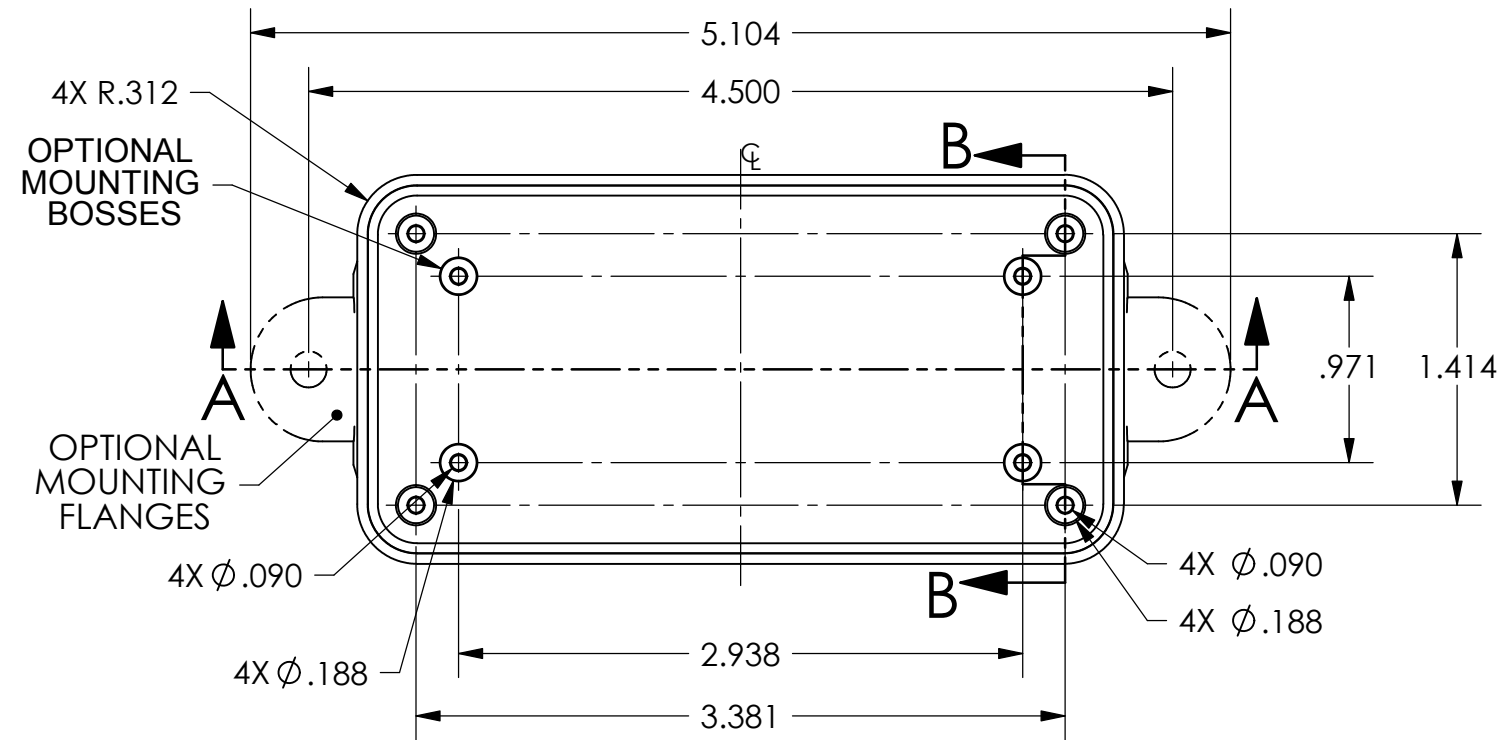
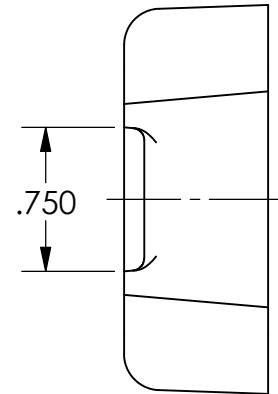
BASE INSERT AREA:
TEXTURED FLUSH OR
RECESSED SMOOTH $\nabla .030$
(TEXTURED FLUSH WITHOUT FLANGES SHOWN)
(RECESSED SMOOTH INSERT AREA ONLY AVAILABLE ON BASE WITHOUT FLANGES)
(FLANGED BASE DOESN'T HAVE A "GUTTER" AROUND INSERT AREA)



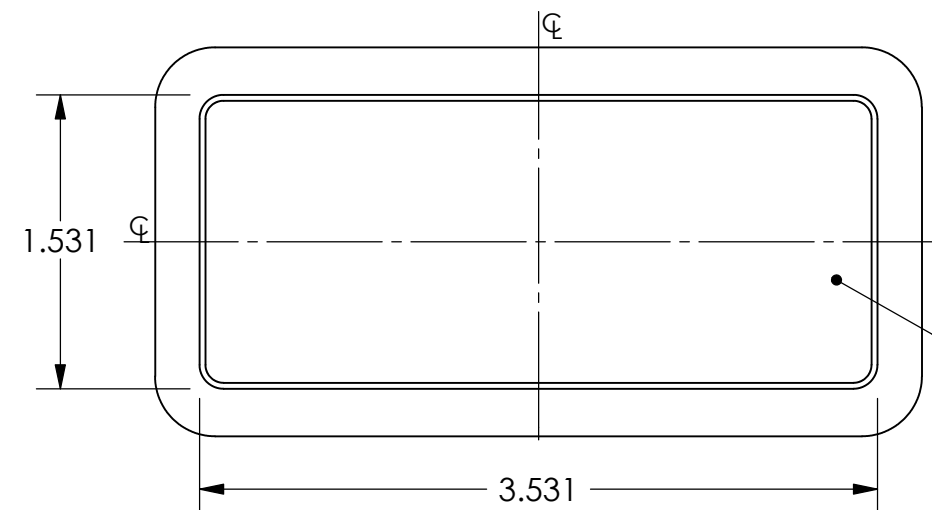
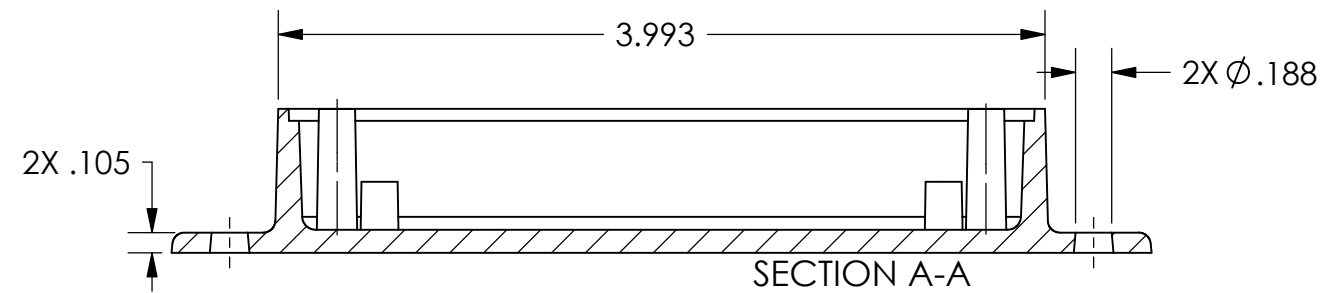
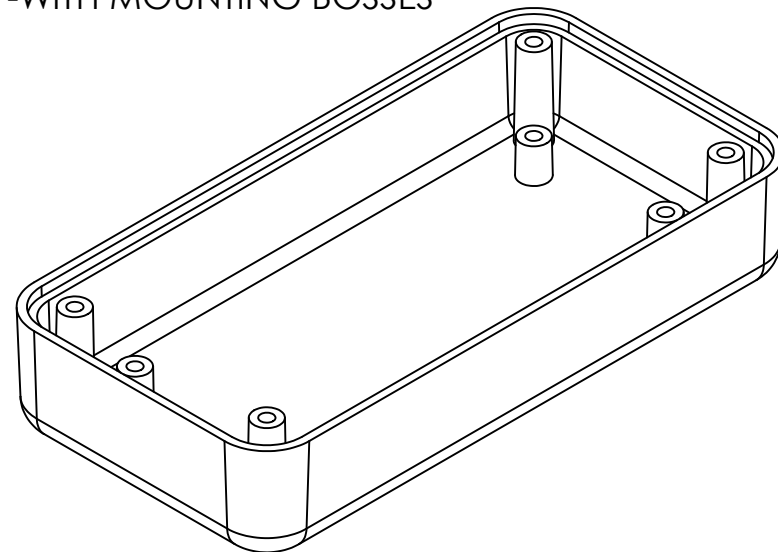
NOTE:
1.) PC BOARD BOSSES WILL ACCEPT A
#4 X 1/4" THREAD FORMING SCREW.
(SCREWS AVAILABLE FROM POLYCASE)

	DRWN BY D.M.F.	APP. BY B.B.	SCALE: 1:1	DATE: 5/5/05
	JOB NO: -	PRODUCT: SL-30_ASS'Y		
TOLERANCES UNLESS OTHERWISE SPECIFIED: X.XX $\pm .030$ X.XXX $\pm .015$	1305 CHESTER IND. PARKWAY AVON, OHIO 44011-1083 U.S.A. PH#: 1-800-248-1233, 440-934-0444 FAX#: 440-934-0088 THIS DRAWING AND THE INFORMATION CONTAINED ARE THE PROPERTY OF POLYCASE AND ARE NOT TO BE REPRODUCED, COPIED OR USED IN ANY WAY DETRIMENTAL TO THE INTEREST OF POLYCASE			CUSTOMER: -
	TITLE: PRODUCT DETAIL DRAWING			SIZE: B

SHEET 1 OF 1

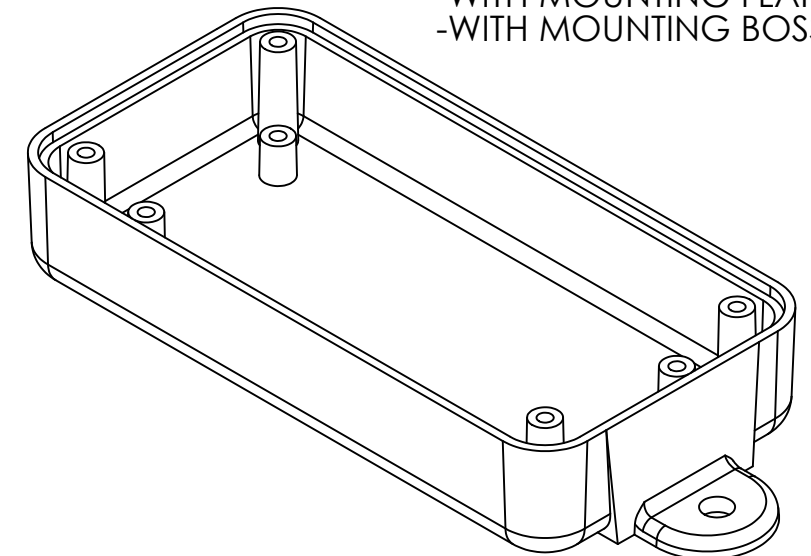


SL-30BPMBT:
-WITHOUT MOUNTING FLANGES
-TEXTURED INSERT AREA
-WITH MOUNTING BOSSSES



INSERT AREA:
TEXTURED FLUSH OR
RECESSED SMOOTH ∇ .030
(TEXTURED FLUSH SHOWN)
(RECESSED SMOOTH ONLY AVAILABLE WITHOUT FLANGES)
(FLANGED BASE DOESN'T HAVE A "GUTTER" AROUND INSERT AREA)

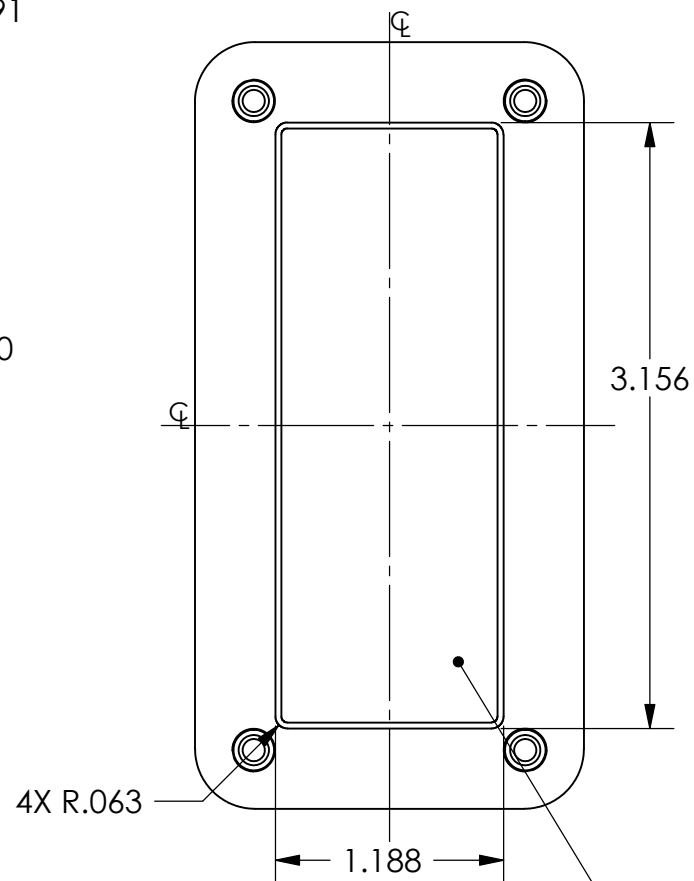
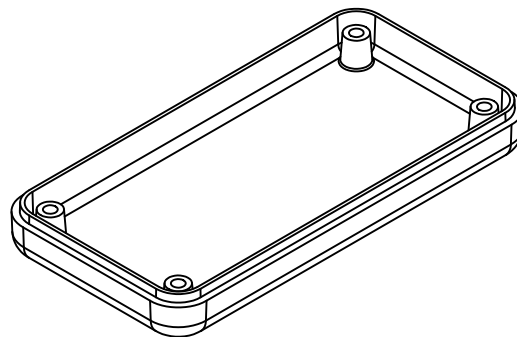
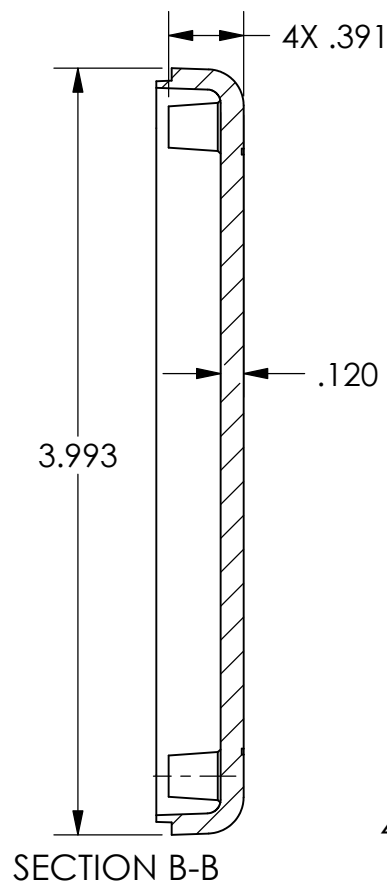
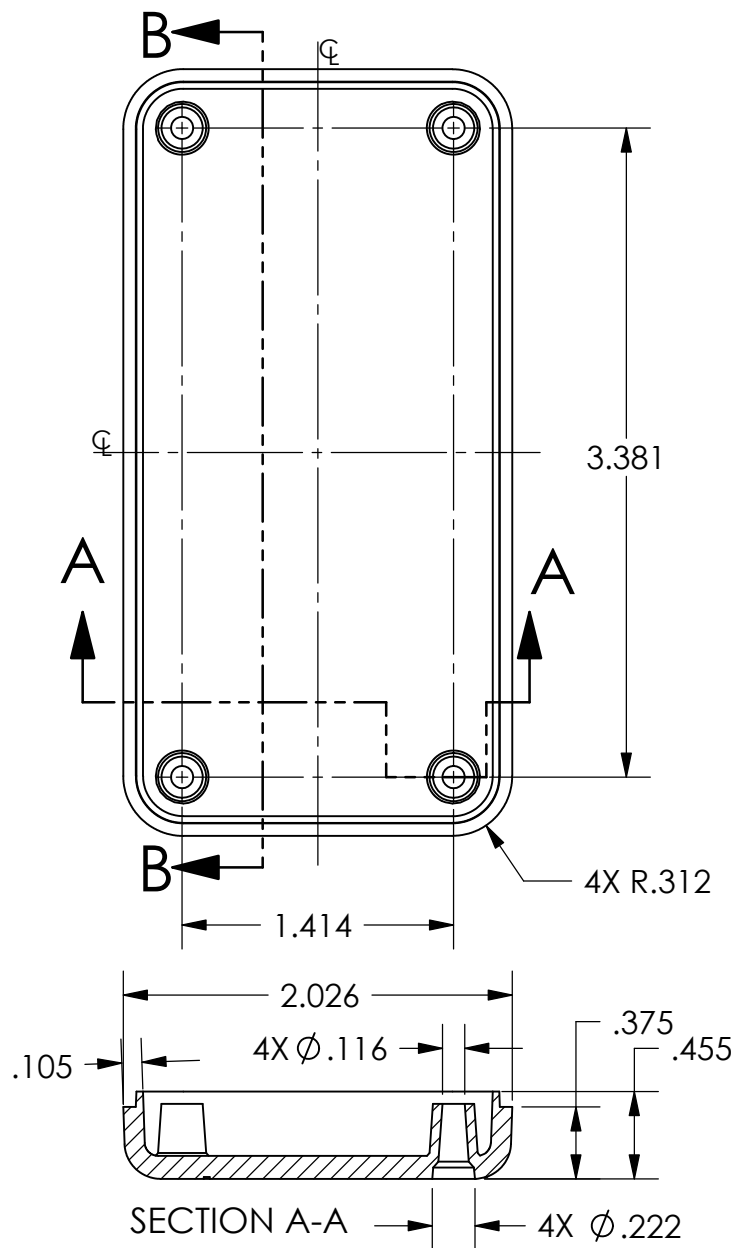
SL-30BFMBT:
-WITH MOUNTING FLANGES
-WITH MOUNTING BOSSSES




NOTE:
1.) PC BOARD WILL ACCEPT A
#4 X 1/4" THREAD FORMING SCREW.
(SCREWS AVAILABLE FROM POLYCASE)

SHEET 1 OF 1

 <div>POLYCASE YOUR PERFECT FIT</div>		DRWN BY D.M.F.		APP. BY B.B.		SCALE: 1:1		DATE: 5/5/05	
TOLERANCES UNLESS OTHERWISE SPECIFIED: X.XX ±.030 X.XXX ±.015		1305 CHESTER IND. PARKWAY AVON, OHIO 44011-1083 U.S.A. PH#: 1-800-248-1233, 440-934-0444 FAX#: 440-934-0088		JOB NO: - -			PRODUCT: SL-30B		
				CUSTOMER: -			SIZE: B		
		THIS DRAWING AND THE INFORMATION CONTAINED ARE THE PROPERTY OF POLYCASE AND ARE NOT TO BE REPRODUCED, COPIED OR USED IN ANY WAY DETRIMENTAL TO THE INTEREST OF POLYCASE						TITLE: PRODUCT DETAIL DRAWING	



SHEET 1 OF 1

 POLYCASE YOUR PERFECT FIT	DRWN BY D.M.F.	APP. BY B.B.	SCALE: 1:1	DATE: 5/5/05
	JOB NO: -		PRODUCT: SL-30C	
TOLERANCES UNLESS OTHERWISE SPECIFIED: X.XX \pm.030 X.XXX \pm.015	1305 CHESTER IND. PARKWAY AVON, OHIO 44011-1083 U.S.A. PH#: 1-800-248-1233, 440-934-0444 FAX#: 440-934-0088			SIZE: A
	THIS DRAWING AND THE INFORMATION CONTAINED ARE THE PROPERTY OF POLYCASE AND ARE NOT TO BE REPRODUCED, COPIED OR USED IN ANY WAY DETRIMENTAL TO THE INTEREST OF POLYCASE			TITLE: PRODUCT DETAIL DRAWING