

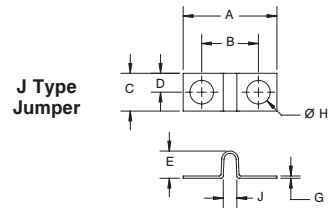
Terminal Block Accessories

J & JS Jumpers

| Catalog # | A | B | C | D | E | F | G | H | J | K | MSP Catalog Designations: |
|-------------|------|------|------|------|------|------|-------|-------|------|------|---------------------------|
| J 410/J 411 | 0.41 | 0.25 | 0.19 | 0.09 | 0.10 | 0.04 | 0.010 | 0.094 | 0.08 | NA | J 600 = LL 100 |
| J 600 | 0.62 | 0.38 | 0.25 | 0.12 | 0.16 | 0.04 | 0.015 | 0.156 | 0.08 | NA | J 601 = LL 200 |
| J 601 | 0.71 | 0.45 | 0.31 | 0.15 | 0.19 | 0.06 | 0.015 | 0.166 | 0.11 | NA | J 602 = LL 300 |
| J 602 | 0.91 | 0.56 | 0.37 | 0.18 | 0.27 | 0.08 | 0.015 | 0.190 | 0.16 | NA | J 603 = LL 400 |
| J 603 | 1.13 | 0.69 | 0.43 | 0.21 | 0.25 | 0.12 | 0.031 | 0.201 | 0.24 | NA | |
| J 604 | 1.38 | 0.88 | 0.50 | 0.25 | 0.35 | 0.15 | 0.035 | 0.234 | 0.32 | NA | |
| J 605 | 1.75 | 1.13 | 0.62 | 0.31 | 0.39 | 0.24 | 0.035 | 0.266 | 0.54 | NA | |
| J 621 | 0.69 | 0.44 | 0.30 | 0.17 | 0.38 | 0.07 | 0.015 | 0.141 | 0.11 | 0.14 | |
| JS 600 | 0.62 | 0.38 | 0.25 | 0.12 | 0.16 | 0.04 | 0.015 | 0.156 | 0.08 | 0.16 | |
| JS 601 | 0.71 | 0.45 | 0.31 | 0.15 | 0.19 | 0.06 | 0.015 | 0.166 | 0.11 | 0.17 | |
| JS 602 | 0.91 | 0.56 | 0.37 | 0.18 | 0.27 | 0.08 | 0.015 | 0.190 | 0.16 | 0.14 | |

Material: Brass
Finish: Nickel Plate

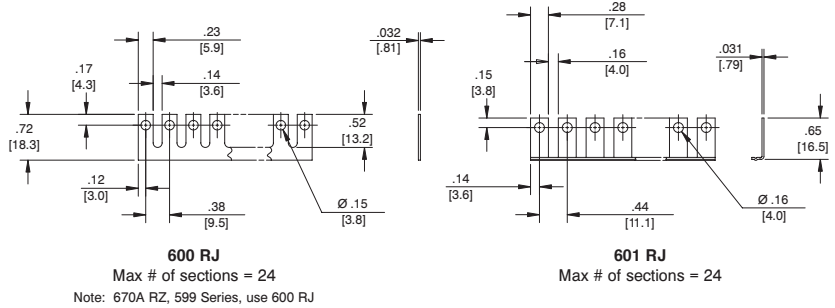
mm = dim X 25.4



NOTE 1: These parts are not necessarily supplied flat. The functioning of the part, however, will not be interfered.

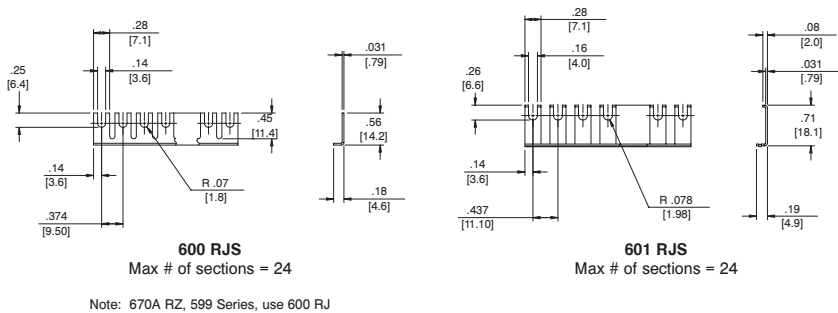
NOTE 2: All dimensions are applicable after the bus (jumper) is torqued down into the associate terminal board.

RJ Type Jumpers



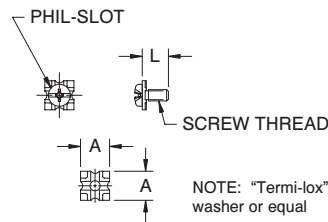
Material: Brass
Finish: Nickel Plate

RJS Type Jumpers



Material: Brass
Finish: Nickel Plate

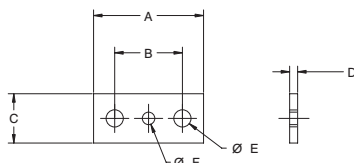
Wire Clamp



| Catalog # | Material | Finish | Screw Thread | L | A |
|-----------|----------|--------|--------------|------|------|
| 3786 | Steel | Nickel | 8-32 UNC | 0.38 | 0.41 |
| 3765 | | | 6-32 UNC | 0.31 | 0.33 |
| 3780 | Brass | Nickel | 8-32 UNC | 0.38 | 0.41 |
| 3760 | | | 6-32 UNC | 0.31 | 0.33 |
| 3860 | Brass | Nickel | 6-32 UNC | 0.30 | 0.29 |
| 3865 | Steel | Nickel | 6-32 UNC | 0.30 | 0.29 |

mm = dim X 25.4

Straddle Plate



| Catalog # | A | B | C | D | E | F | Material | Finish |
|-----------|------|------|------|-------|-------|-------|----------|--------|
| SPB 600 | 0.56 | 0.31 | 0.30 | 0.032 | 0.144 | N/A | Brass | Tin |
| SPB 601 | 0.71 | 0.42 | 0.30 | 0.031 | 0.148 | N/A | Brass | Nickel |
| SPB 602 | 0.87 | 0.50 | 0.40 | 0.032 | 0.189 | N/A | Brass | Nickel |
| SPB 603 | 1.03 | 0.62 | 0.45 | 0.063 | 0.190 | 0.143 | Brass | Tin |
| SPB 604 | 1.21 | 0.75 | 0.54 | 0.087 | 0.187 | 0.138 | Brass | Tin |
| SPB 605 | 1.46 | 0.87 | 0.63 | 0.116 | 0.220 | 0.138 | Brass | Nickel |

mm = dim X 25.4