

## 4-1609134-7 Product Details

**Detailed product features are not currently available online.**

Product features can often be found by referring to the available documents. [Contact us](#) for information about this product.

No Image Available

### 20ESRM-3=F8277



Always EU RoHS/ELV Compliant ([Statement of Compliance](#))

### 4-1609134-7 (20ESRM-3)

TE Internal Number: 4-1609134-7



Active

#### Documentation & Additional Information

##### Product Drawings:

- [CUSTOMER DRAWING 20ESRM-3](#) (PDF, English)

##### Catalog Pages/Data Sheets:

- [1654001\\_CORCOM\\_PRODUCT\\_GUIDE\\_SR\\_SERIES](#) (PDF, English)
- [8-1773460-7\\_CORCOM\\_SR\\_SERIES\\_FILTERS](#) (PDF, English)

##### Product Specifications:

- None Available

##### Application Specifications:

- None Available

##### Instruction Sheets:

- None Available

##### CAD Files:

- None Available

##### Related Products:

- [Tooling](#)

THIS MODULE HAS BEEN FORMALLY RECOGNIZED, CERTIFIED OR APPROVED BY THE LISTED AGENCY. THEREFORE, ALL TEST/REQUIREMENTS SPECIFIED IN THE LATEST REVISION OF THE FOLLOWING AGENCY STANDARDS HAVE BEEN MET:

## OPERATING SPECIFICATIONS

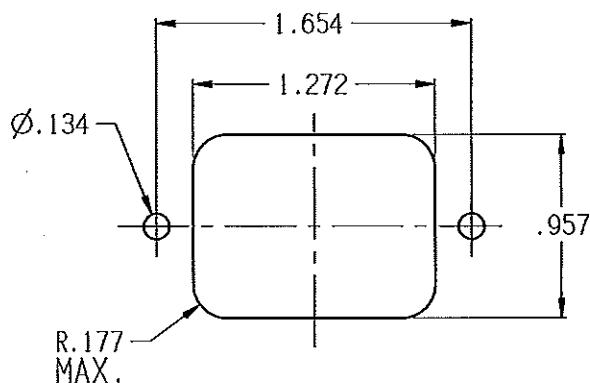
LINE FREQUENCY: 50-60Hz

STORAGE TEMPERATURE: -40°C TO +85°C  
HUMIDITY: 21 DAYS @ 40°C 95% RH.

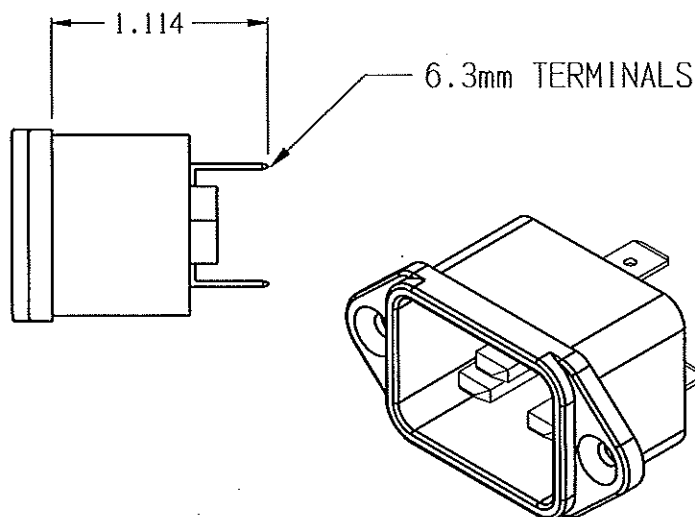
L/G AND L/L I.R. @ 6000M (MIN.) 100VDC,  
20°C AND 50% RH



LINE TO GROUND: 1500 VAC FOR 1 MINUTE  
LINE TO LINE: 1450 VDC FOR 1 MINUTE

ECN#	APPRVD	DATE
0-005938	BG	19MAR10



### RECOMMENDED PANEL CUTOUT



50 $\Omega$ - 50 $\Omega$ (MINIMUM) INSERTION LOSS														PARTS SHALL COMPLY WITH TYCO ELECTRONICS 138-702 SPECIFICATION FOR HAZARDOUS SUBSTANCES															
FREQUENCY MHz		/	/	/	/	/	/	/	/	/	/	/	/	<div><b>Tyco Electronics</b> CORCON PRODUCTS, 620 S. BUTTERFIELD RD., MUNDLEIN IL 60060</div>															
COMMON dB		/	/	/	/	/	/	/	/	/	/	/	/	NOTES:															
DIFF. dB		/	/	/	/	/	/	/	/	/	/	/	/																
SHEET SIZE		THIRD ANGLE PROJECTION		THIS INFORMATION IS CONFIDENTIAL AND PROPRIETARY TO TYCO ELECTRONICS CORPORATION AND ITS WORLDWIDE SUBSIDIARIES AND AFFILIATES. IT MAY NOT BE DISCLOSED TO ANYONE OTHER THAN TYCO ELECTRONICS PERSONNEL, WITHOUT WRITTEN AUTHORIZATION FROM TYCO ELECTRONICS CORPORATION, HARRISBURG, PENNSYLVANIA USA.												<div><b>CUSTOMER DRAWING</b> TYCO ELECTRONICS PART NO. 4-1609134-7</div>													
A																<div>SCALE: 1:1      DATE: 17FEB10      DRAWING NUMBER: 20ESRM-3      REV. A DRW. BY: LJO      DESG: /</div>													
														20ESRM-3-A.cxd															