

6-1609075-4 Product Details

Detailed product features are not currently available online.

Product features can often be found by referring to the available documents. [Contact us](#) for information about this product.

No Image Available

60DBRL1=F6844



Always EU RoHS/ELV Compliant (Statement of Compliance)

6-1609075-4
(60DBRL1)

TE Internal Number: 6-1609075-4



Active

Documentation & Additional Information

Product Drawings:

- [60 DB SERIES RECEPTACLE WITH 6 AWG CABLE](#) (PDF, English)

Catalog Pages/Data Sheets:

- [1-1654250-1_CORCOM_EMI_RFI_QRG](#) (PDF, English)
- [1654001_Corcom_Product_Guide_DB_Series](#) (PDF, English)
- [CORCOM_DB_SERIES](#) (PDF, English)

Product Specifications:

- None Available

Application Specifications:

- None Available

Instruction Sheets:

- None Available

CAD Files:

- None Available

Related Products:

- [Tooling](#)

CUSTOMER DRAWING

60DBPL SERIES

ECN #	APPRVD.	DATE
	PJO	01OCT08

SAFETY ORGANIZATIONS

THIS CONNECTOR HAS BEEN FORMALLY RECOGNIZED, CERTIFIED OR APPROVED BY THE LISTED AGENCY. THEREFORE, ALL TEST/REQUIREMENTS SPECIFIED IN THE LATEST REVISION OF THE FOLLOWING AGENCY STANDARDS HAVE BEEN MET:

UL RECOGNIZED: UL 1977
 CSA CERTIFIED: CSA 182.3 (THROUGH U.L.)
 TUV CERTIFIED: EN 61984

OPERATING SPECIFICATIONS

LINE CURRENT/VOLTAGE: 60 AMP, 300 VAC
 60 AMP, 300 VDC

LINE FREQUENCY: 0-60Hz

OPERATING AMBIENT TEMP. RANGE: -10°C TO +55°C @ RATED CURRENT, I_r .

IN AN AMBIENT, T_a , HIGHER THAN 55°C, THE MAXIMUM OPERATING CURRENT, I_o , IS AS FOLLOWS:

$$I_o = I_r \sqrt{\frac{105 - T_a}{50}}$$

RELIABILITY SPECIFICATIONS:

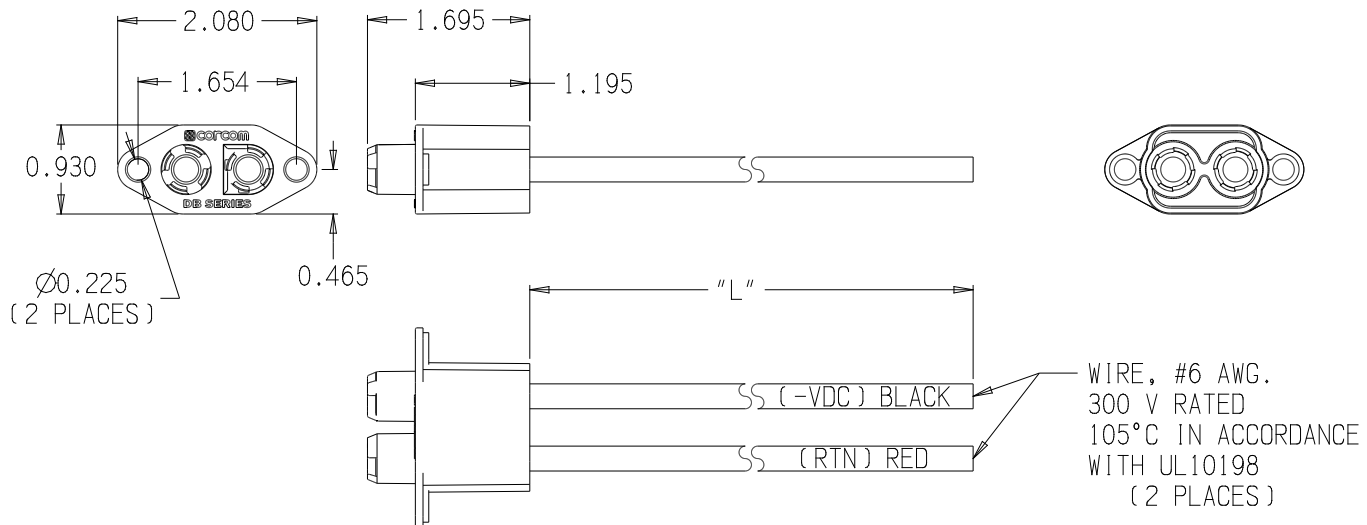
STORAGE TEMPERATURE: -40°C TO +85°C
 HUMIDITY: 21 DAYS @ 40°C 95% RH.
 CURRENT OVERLOAD TEST: 6 TIMES I_r FOR 8 SECONDS


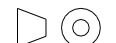
RECOMMENDED RECEIVING INSPECTION HIPOT:

LINE TO LINE: 1600 VAC FOR 1 MINUTE

NOT RECOMMENDED FOR HOT SWAP APPLICATIONS

NOT RECOMMENDED FOR CURRENT INTERRUPTING



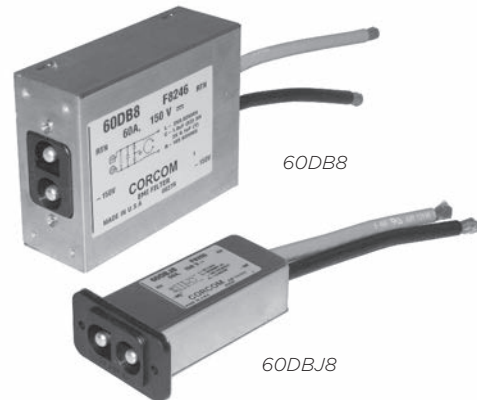
CATALOG DESIGNATION	T.E.PN	CABLE LENGTH "L" (IN) MIN.	PARTS SHALL COMPLY WITH TYCO ELECTRONICS 230-702 SPECIFICATION FOR HAZARDOUS SUBSTANCES			
60DBPL1	4-1609075-9	12.0	UNLESS OTHERWISE SPECIFIED TOLERANCE TO BE ±0.025 MATERIAL & FINISH: AS SUPPLIED		 CORCON PRODUCTS, 620 S. BUTTERFIELD RD., MUNDELEIN IL 60060	
60DBPL3	5-1609075-0	36.0				
60DBPL9	5-1609075-1	108.0				
SHEET SIZE:  THIRD ANGLE PROJECTION THIS INFORMATION IS CONFIDENTIAL AND PROPRIETARY TO TYCO ELECTRONICS CORPORATION AND ITS WORLDWIDE SUBSIDIARIES AND AFFILIATES. IT MAY NOT BE DISCLOSED TO ANYONE OTHER THAN TYCO ELECTRONICS PERSONNEL, WITHOUT WRITTEN AUTHORIZATION FROM TYCO ELECTRONICS CORPORATION, HARRISBURG, PENNSYLVANIA USA.			NOTES:		TYCO ELECTRONICS PART NO. SEE CHART	
			CVM AVAILABLE		SCALE: .5:1 DATE: 01OCT08 DRW. BY: SD ORTG: PJO	
			YES NO		DRAWING NUMBER: 60 DBPL SERIES 0	
			G:\KeyCreator Directories\CD		REV.	
			60DBPL-0.cxd			

Compact RFI High Current DC Inlet Connection

DB Series



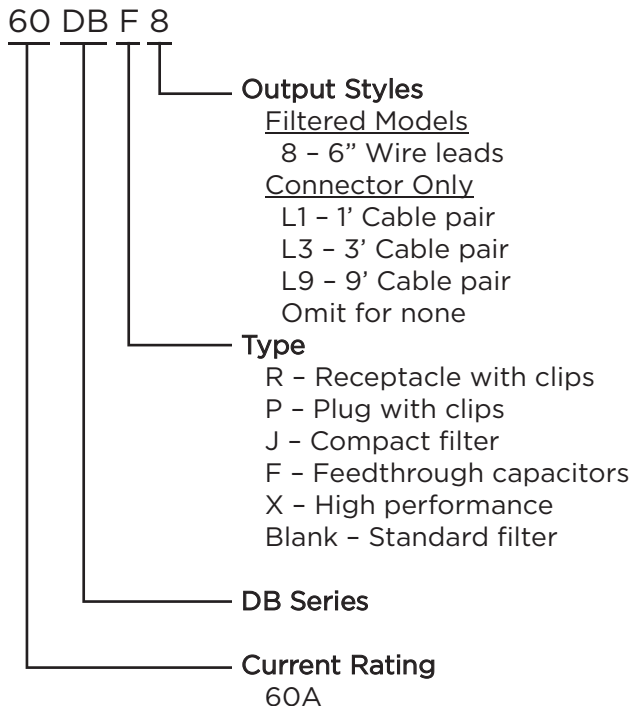
UL Recognized
CSA Certified
TUV Certified



DB Series

- Compact connector for high-current DC applications
- Reliable performance in a compact assembly
- Polarized mating scheme
- Easy customer termination of power source
- Plug and receptacle available pre-terminated in standard wire lengths
- Available filtered or unfiltered

Ordering Information



Specifications

Hipot rating (one minute):

	Filtered Models	DBR & DBP
Line to Ground:	2121 VDC	n/a
Line to Line:	1768 VDC	1600 VAC

Rated Voltage (max): 150VDC* 300 VDC

Rated Current: 60A (*all versions*)

Operating Ambient Temperature Range

(at rated current I_r): -10°C to +55°C
In an ambient temperature (T_a) higher than +55°C the maximum operating current (I_o) is calculated as follows: $I_o = I_r \sqrt{(85-T_a)/30}$

*Certified to 120V for TUV

Available Part Numbers

Filtered Models	
60DB8	60DBJ8
60DBF8	60DBX8
Connectors Only	
60DBR	60DBP
60DBRL1	60DBPL1
60DBRL3	60DBPL3
	60DBPL9

WARNING

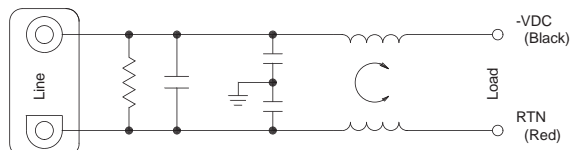
This is not approved for hot swap or current interruption in DC applications. Doing so will result in irreparable damage to contacts.

Compact RFI High Current DC Inlet Filter *(continued)*

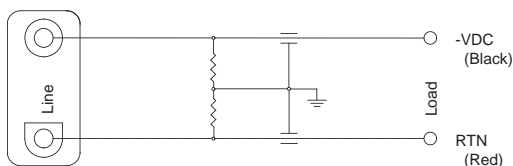
DB Series

Electrical Schematics

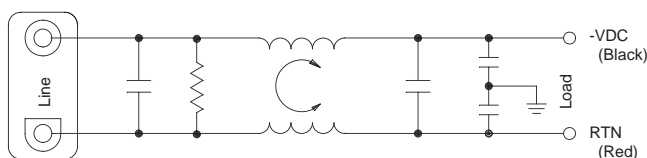
DB8 & DBJ8



DBF8



DBX8



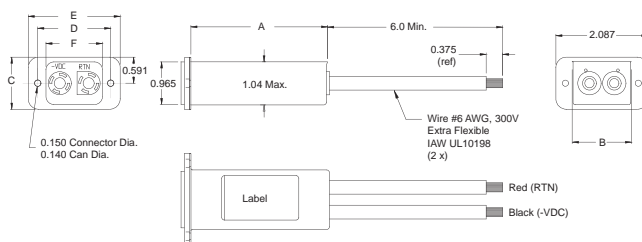
60DBPL

60DBRL

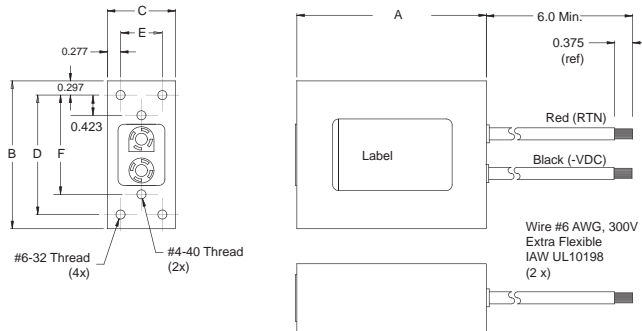
Available as connector only (shown)
or with pre-installed 6AWG 300V Extra Flexible wire

Case Styles

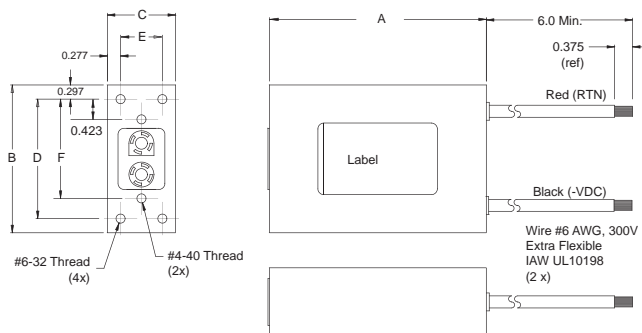
DBJ8



DB8 & DBF8



DBX8

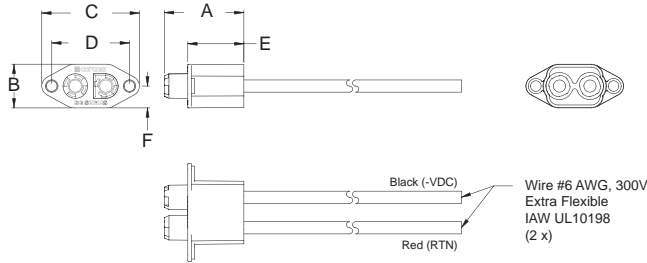


Compact RFI High Current DC Inlet Filter (continued)

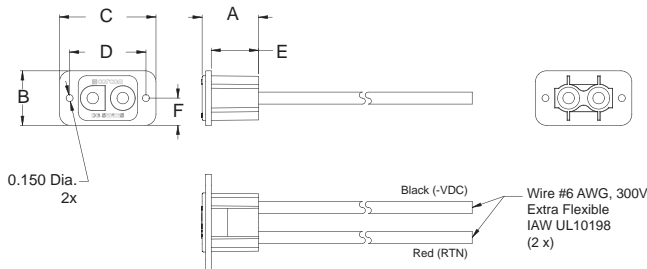
DB Series

Case Styles (continued)

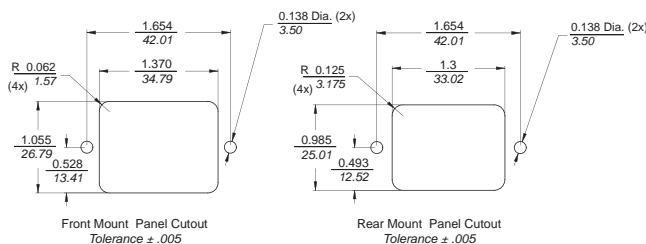
DBPL



DBRL



Recommended Panel Cutout



Minimum cable lengths:
DBRL1 / DBPL1: 12 [304.8]
DBRL3 / DBPL3: 36 [914.4]
DBPL9: 108 [2743.2]

Accessories / Tooling

Insertion/Extraction Tool:	1643922-1*
Crimp per TE spec:	114-13206
Crimp tool:	M22520/23-01
Indenter head:	M22520/23-04
Locator:	M22520/23-11
Connector system locking kit ¹ :	Contact TE

*for DBR / DBP Only

¹Tool required to disengage mated connector when using locking kit

Case Dimensions

Part No.	A (max)	B (max)	C ± 0.025 ± 0.635	D ± 0.025 ± 0.635	E ± 0.025 ± 0.635	F ± 0.025 ± 0.635
60DBJ8	3.2 81.28	1.36 34.544	1.181 29.997	1.654 42.012	2.087 53.01	1.28 32.512
60DB8	4.06	3.20	1.45	2.50	0.875	2.077
60DBF8	103.12	81.28	36.83	63.50	22.23	52.76
60DBX	6.06 153.92	3.50 88.90	1.45 36.83	2.876 73.05	0.875 22.23	2.265 57.53
60DBRL	1.22* 30.99*	1.181* 29.99	2.087 53.009	1.654 42.011	1.023 25.984	0.591 15.011
60DBPL	1.695* 43.05*	0.93* 23.62*	2.08 52.832	1.654 42.011	1.195 30.353	0.465 11.811

*± 0.025 [0.635]

Performance Data

Minimum Insertion Loss

Measured in closed 50 Ohm system

Common Mode / Asymmetrical (Line to Ground)

Part No.	Frequency – MHz							
	0.1	0.15	0.5	1	5	1	20	30
60DBJ8	-	-	-	1	13	21	30	40

Part No.	Frequency – MHz							
	0.05	0.1	0.15	.5	1	3	5	10
60DB8	2	7	10	23	30	48	38	28
60DBF8	15	22	25	35	42	50	58	54
60DBX8	-	10	16	40	48	54	60	51

Differential Mode / Symmetrical (Line to Line)

Part No.	Frequency – MHz							
	0.1	0.15	0.5	1	5	1	20	30
60DBJ8	5	8	19	26	34	26	20	16

Part No.	Frequency – MHz							
	0.05	0.1	0.15	.5	1	3	5	10
60DB8	20	26	29	43	53	30	30	24
60DBF8	9	15	18	30	34	40	44	48
60DBX8	31	30	30	70	70	54	50	60