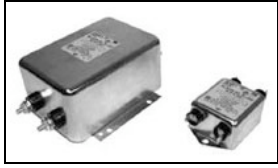


## 2-6609037-2 Product Details



**2-6609037-2**  
(15EMC3)

TE Internal Number: 2-6609037-2



### EMI/RFI Filters and Accessories

 Always EU RoHS/ELV Compliant (Statement of Compliance)

#### Product Highlights:

- Filter - EMI/RFI
- Filter Type = Power Line
- EMC (3-30 Amp) Series
- Dual Stage Noise Reduction to meet CISPR and FCC Application
- Mount Style = Flanged

### Documentation & Additional Information

#### Product Drawings:

- [CUSTOMER DRAWING 15EMC3](#) (PDF, English)

#### Catalog Pages/Data Sheets:

- [1-1654250-1\\_CORCOM\\_EMI\\_RFI\\_QRG](#) (PDF, English)
- [1654001\\_CORCOM\\_PRODUCT\\_GUIDE EMC\\_SERIES](#) (PDF, English)

#### Product Specifications:

- None Available

#### Application Specifications:

- None Available

#### Instruction Sheets:

- None Available

#### CAD Files: (CAD Format & Compression Information)

- [2D Drawing](#) (DXF, Version A)
- [3D Model](#) (IGES, Version A)
- [3D Model](#) (STEP, Version A)

#### Additional Information:

- [Product Line Information](#)

#### Additional Product Images:

- [Insertion Loss/Specifications](#)

#### Related Products:

- [Tooling](#)

### Product Features (Please use the Product Drawing for all design activity)

#### Product Type Features:

- [Product Type](#) = Filter - EMI/RFI
- [Filter Type](#) = Power Line
- [Series](#) = EMC (3-30 Amp)
- [Filtered](#) = Yes

#### Electrical Characteristics:

- [Current Rating \(A\)](#) = 15
- [Voltage ≤ \(VAC\)](#) = 250
- [Leakage Current \(Line-to-Ground\) Max. @ 250 VAC 50 Hz \(mA\)](#) = 1.52
- [Leakage Current \(Line-to-Ground\) Max. @ 120 VAC 60 Hz \(mA\)](#) = 0.73

#### Termination Features:

- [Terminal Input - Output Combination](#) = Wire Lead - Wire Lead

#### Body Features:

- [Mount Style](#) = Flanged

#### Industry Standards:

- [RoHS/ELV Compliance](#) = RoHS compliant, ELV compliant
- [Lead Free Solder Processes](#) = Not relevant for lead free process
- [RoHS/ELV Compliance History](#) = Always was RoHS compliant
- [Approved Standards](#) = CSA Certified, VDE Approved, UL Recognized

#### Conditions for Usage:

- [Facility Installation](#) = No
- [Need Min Size With IEC Connector](#) = No
- [Need Optional Switch, Fusing, Or Voltage Selector](#) = No

#### Operation/Application:

- [Application](#) = Dual Stage Noise Reduction to meet CISPR and FCC

#### Other:

- [Brand](#) = Corcom

CATALOG # 15EMC3

ECO #	APPRVD.	DATE
	KAW	3DEC06

**SAFETY ORGANIZATIONS**

THIS FILTER HAS BEEN FORMALLY RECOGNIZED, CERTIFIED OR APPROVED BY THE LISTED AGENCY. THEREFORE, ALL TEST/REQUIREMENTS SPECIFIED IN THE LATEST REVISION OF THE FOLLOWING AGENCY STANDARDS HAVE BEEN MET:

- UL RECOGNIZED: UL 1283
- CSA CERTIFIED: CSA 22.2, # 8
- VOE APPROVED: EN 133200

**OPERATING SPECIFICATIONS**

LINE CURRENT/VOLTAGE: 15 AMP/40°C 120/250VAC

LINE FREQUENCY: 50-60Hz

MAXIMUM LEAKAGE CURRENT,  
EACH LINE TO GROUND: 0.73mA @ 120V, 60Hz  
1.27mA @ 250V, 50Hz

OPERATING AMBIENT TEMP. RANGE: -10°C TO +40°C @ RATED CURRENT, I<sub>r</sub>.

IN AN AMBIENT, T<sub>0</sub>, HIGHER THAN 40°C, THE MAXIMUM OPERATING CURRENT, I<sub>0</sub>, IS AS FOLLOWS:

$$I_0 = I_r \sqrt{\frac{100 - T_0}{60}}$$

**RELIABILITY SPECIFICATIONS:**

STORAGE TEMPERATURE: -40°C TO +85°C  
HUMIDITY: 21 DAYS @ 40°C 95% RH.  
CURRENT OVERLOAD TEST: 6 TIMES I<sub>r</sub> FOR 8 SECONDS

**TEST SPECIFICATIONS:**

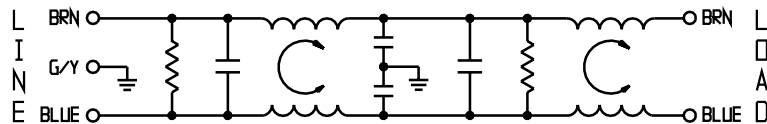
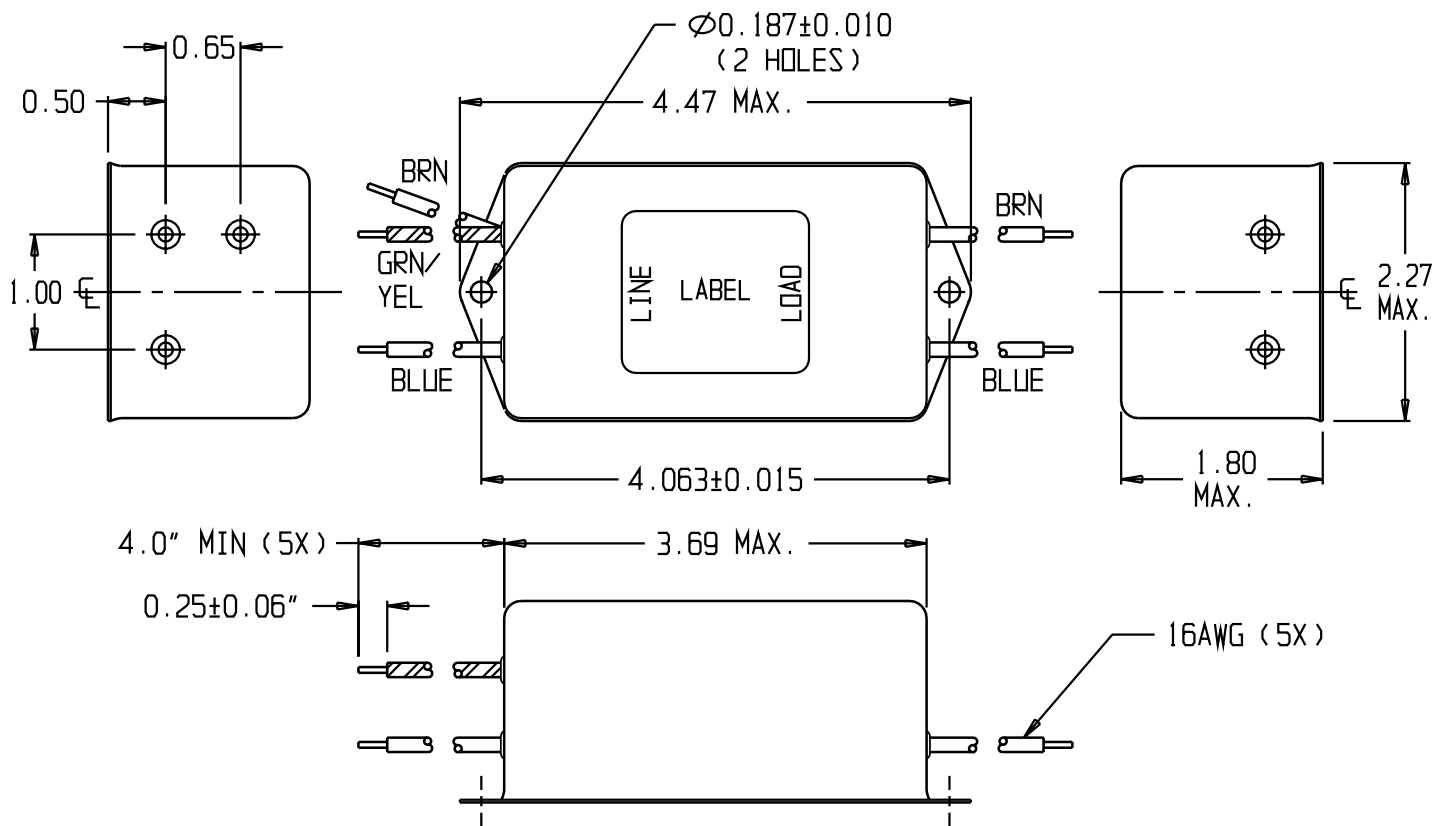
INDUCTANCE: 1.04mH NOMINAL  
CAPACITANCE: (MEASURED @ 1KHz, 0.250VAC MAX., 25°C±1°C)  
LINE TO GROUND: 0.02µF ±20%  
LINE TO LINE: 3.005µF ±20%  
DISCHARGE RESISTOR: 117KΩ  
L/G AND L/L I.R.: 6000MΩ (MIN.) @ 100VDC, 20°C AND 50% RH

**RECOMMENDED RECEIVING INSPECTION HIPOT:**

LINE TO GROUND: 1500VAC OR 2250VDC FOR 1 MINUTE  
LINE TO LINE: 1450VDC FOR 1 MINUTE

**FILTER APPROVAL:**

THE BEST WAY TO SELECT AND QUALIFY A FILTER IS FOR YOUR ENGINEERING TO TEST THE UNIT IN YOUR EQUIPMENT.



**50Ω - 50Ω (MINIMUM) INSERTION LOSS**

FREQUENCY MHz	0.01	0.05	0.07	0.11	0.15	1.0	2.0	10	20	30
COMMON dB	1	3	1	12	22	70	68	57	54	53
DIFF. dB	9	16	16	13	34	61	52	36	36	23

THIRD ANGLE PROJECTION

UNLESS OTHERWISE SPECIFIED, TOLERANCE TO BE ±.025 MATERIAL & FINISH: AS SUPPLIED

This document is proprietary to CORCOM INC. and is not to be reproduced nor used for manufacturing purposes except on CORCOM'S prior written consent.

**tyco** Electronics **corcom**  
620 S. BUTTERFIELD ROAD MUNDLEIGH IL 60060

**CUSTOMER DRAWING 15EMC3**

TYCO: 2-6609037-2

SCALE: DATE: 9DEC03 CATALOG NO. 15EMC3 REV. A

DRW. BY: JF ORIG: KAW